



Charles Street, W1J

£695 Per week

A bright and spacious studio apartment located in this beautiful period building within walking distance to Berkeley Square and Green Park Underground station.

Set in the heart of peaceful Mayfair Village this magnificent property is only a few streets away from some of the world's finest restaurants and luxury retail destinations.

Features

- Well-Appointed Studio
- Grade II Listed Building
- New Bathroom
- High Ceilings
- Excellent Location
- Furnished



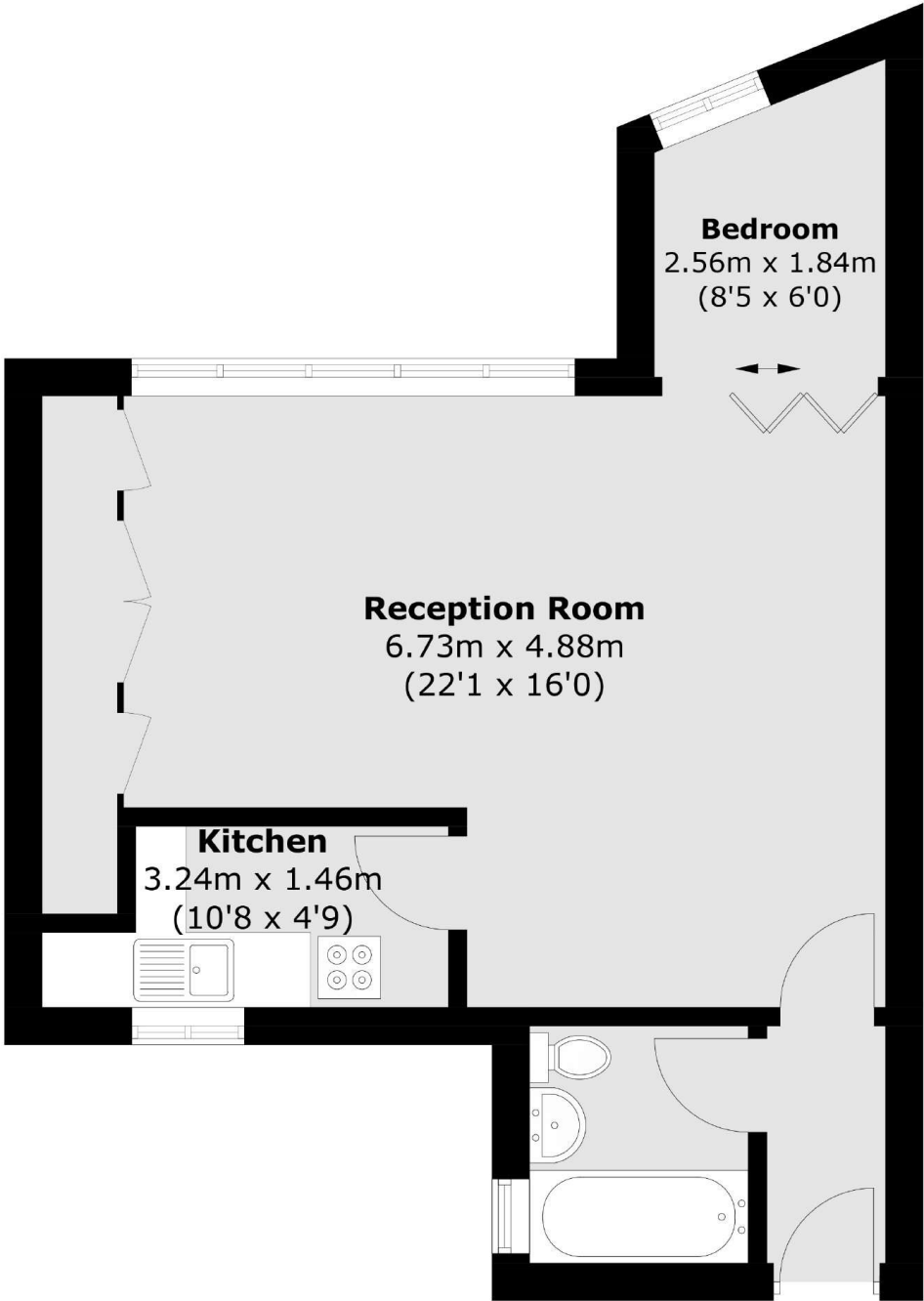
Charles Street, W1J

Situated within a period conversion property, the studio apartment offers light and high ceilings and built in storage throughout. The property comes furnished with a separate kitchen space and refurbished bathroom.

The property is in an excellent location moments from the beautiful Mount Street with luxury retail and Berkeley Square on the doorstep.



Charles Street,
London, W1J



Total area (approx.): 43.3 sq. m (466.1 sq. ft)



Wetherell
102 Mount Street
London
W1K 2TH
Lettings
020 7529 5588

Energy Rating: D. We aim to make our particulars both accurate and reliable. However they are not guaranteed; nor do they form part of an offer or contract. If you require clarification on any points then please contact us, especially if you're traveling some distance to view. Please note that appliances and heating systems have not been tested and therefore no warranties can be given as to their good working order.



dexters.co.uk