



WESTOVER ROAD, SW18

£450,000

- Three double bedrooms
- Excellent condition
- Close to Wandsworth Common
- Spacious open plan
- Sought after location
- Energy rating: C





ABOUT THE HOME

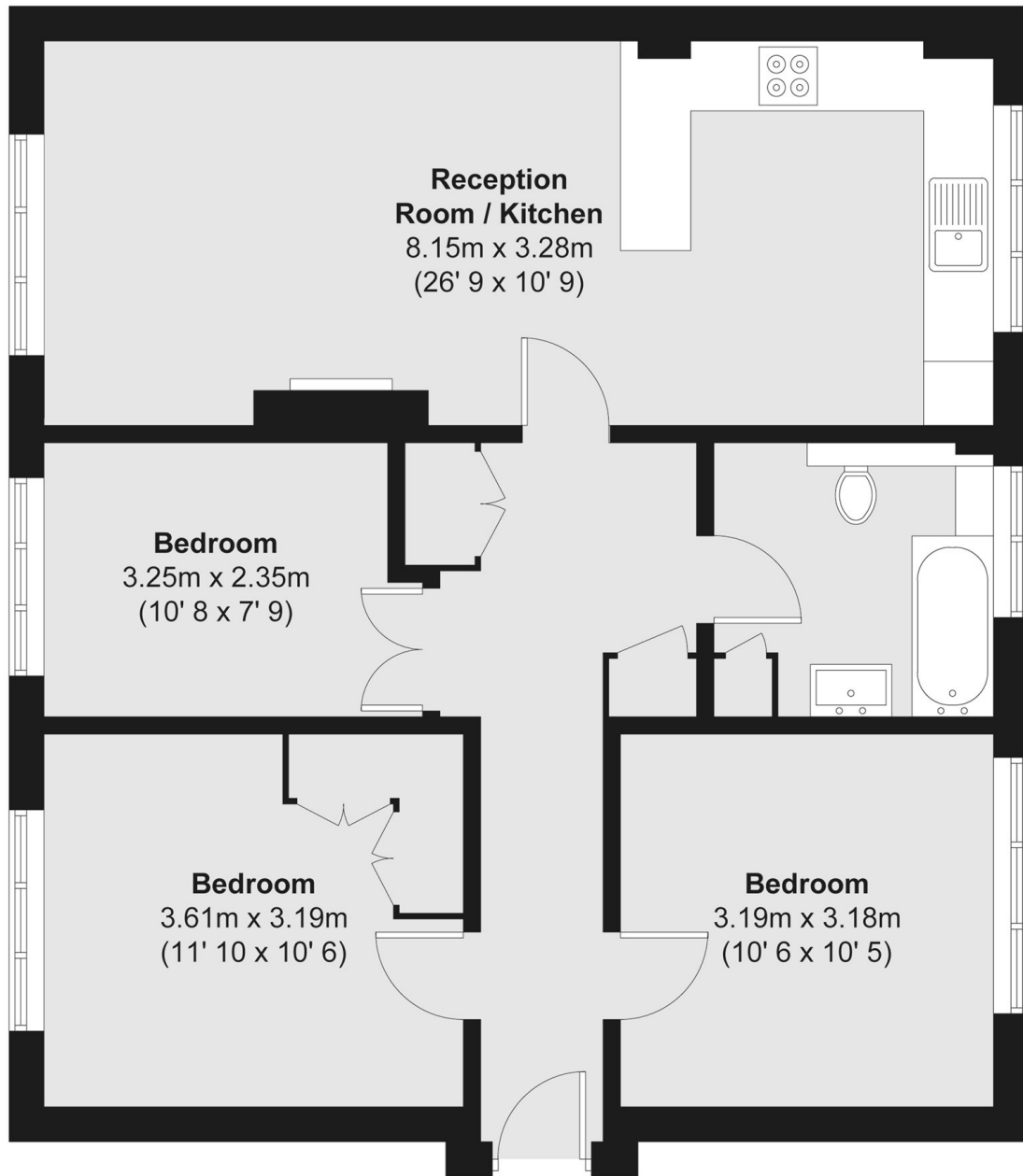
A beautifully presented three bedroom ground floor apartment offering bright and spacious accommodation throughout.

The property features three well-proportioned bedrooms, a modern family bathroom, and a generous open-plan reception room/kitchen creating the perfect space for both relaxing and entertaining. The contemporary kitchen is finished to a high standard with ample storage and workspace, while large windows allow an abundance of natural light to flow throughout the home. The flat also benefits from access to two large communal gardens, providing excellent outdoor space for residents to enjoy.

Situated on an extremely sought after road in Wandsworth, Westover Road is ideal for both Wandsworth and Earlsfield Towns and the abundance and amenities they have in the area, including excellent schools, transport links and restaurants.







APPROX. GROSS INTERNAL FLOOR AREA
810 SQFT / 75.3 SQM

JACKSONS EARLSFIELD

372-374 Garratt Lane,
Earlsfield, London, SW18 4ES
Sales: 020 8971 7979
Lettings: 020 8971 7070

Energy Rating: C We aim to make our particulars both accurate and reliable. However they are not guaranteed; nor do they form part of an offer or contract. If you require clarification on any points then please contact us, especially if you're traveling some distance to view. Please note that appliances and heating systems have not been tested and therefore no warranties can be given as to their good working order.