

3
BED

A Stunning Family Residence with No Chain

33, Broomfield Avenue, Peacehaven, BN10 7AL



Price £475,000

Freehold

phillipmann
we do more

www.phillipmann.com

33 Broomfield Avenue, BN10 7AL

Approximate Gross Internal Floor Area = 123.13 sq m / 1325 sq ft

Outbuilding Area = 6.99 sq m / 75 sq ft

Total Area = 130.12 sq m / 1400 sq ft

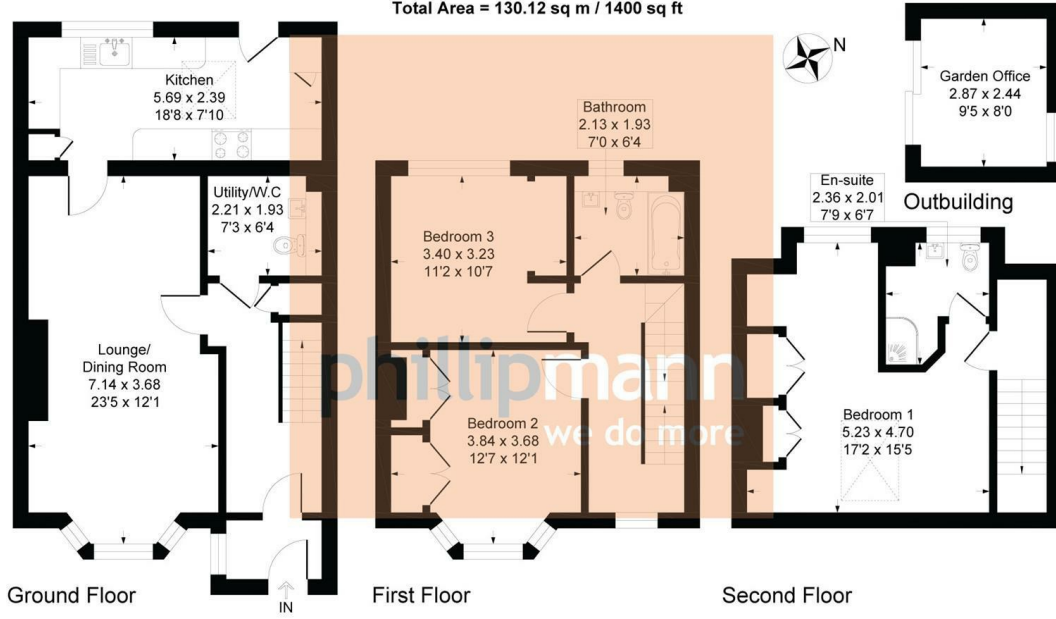


Illustration for identification purposes only, measurements are approximate, not to scale

inbrief...

Offered for sale with no onward chain, viewings are highly advised to appreciate this stunning home. Constructed in 2016 with a character design in keeping with Broomfield Avenue, this delightful semi-detached house is nestled in the charming area of Telscombe Cliffs, Peacehaven and offers a perfect blend of comfort and convenience. The property is within easy reach of local amenities, schools, beautiful coastal walks and the South Downs, making it an excellent choice for those who appreciate both tranquility and accessibility.

As you approach the property, you are immediately presented with a well kept block paved driveway providing parking for several vehicles. The useful porch with glazed inner door leads into the spacious entrance hall featuring under stair storage and deceptively large cloakroom w/c with space for utility white goods.

The spacious lounge/dining room is at the heart of the home. A character bay window with fitted blinds affords a pleasant outlook and an inner door leads into the kitchen. The kitchen, running the full width of the property, is fitted with a range of wall and base units and complementing granite effect worktops. Further features include: eye level microwave oven/grill and lower double oven, space for white goods, integral fridge freezer, tiled floor and contrasting splash back, inset sink with drainage grooves, glass door and window to rear garden and 5 ring gas hob with overhead extractor.

The beautifully landscaped and well maintained rear garden provides a wonderful outdoor entertaining space with a range of mature stocked borders, shrubbery, a variety of trees, storage sheds, side access and a studio/office featuring power, lighting and cabled internet, creating the perfect work from home space.

With three well proportioned double bedrooms, an ensuite bathroom and second family bathroom, this property is ideal for families or those seeking extra space.

VIEWINGS ADVISED



EPC - B

Council Tax Band - D

moreinfo...



Phillip Mann Peacehaven Office

226-230 South Coast Road, Peacehaven, BN10 8JR

01273 586622

To see more details on this & all our homes go to www.phillipmann.com