



SIGNATURE

Rose Lane, Mynydd Isa

Offers Over
£200,000

Bedrooms: 2 | Bathrooms: 1 | Receptions: 2

A beautifully presented two double bedroom Victorian semi-detached home, located along the ever-popular Rose Lane in the heart of Mynydd Isa.

This attractive red-brick property offers far more space than first meets the eye, combining period charm with generous room proportions and excellent future potential. To the first floor are two particularly spacious double bedrooms and an impressive, large family bathroom fitted with a four-piece suite. Several neighbouring properties have successfully reconfigured the upstairs layout to create a third bedroom, something that could be explored here, subject to the necessary permissions.

The ground floor provides superb living space, a hallway leads into the living areas beginning with a welcoming living room to the front featuring a striking fireplace and high ceilings, flowing through to a separate dining area and a good-sized kitchen to the rear. The layout works perfectly for both everyday living and entertaining.

Externally, the property truly stands out. The rear garden is much larger than typically expected for this style of home and has been designed for low maintenance with artificial lawn, paved seating areas and a useful garden shed, creating a private, usable outdoor space all year round. A wonderful example of a Victorian home in a sought-after village location, offering space, character and exciting potential for the future.

- NO ONWARD CHAIN
- CHARACTER PROPERTY
- SOUGHT AFTER VILLAGE LOCATION
- MOVE IN READY
- SCOPE TO RE-CONFIGURE (STP)
- TWO DOUBLE BEDROOMS
- LARGE BATHROOM WITH FOUR-PIECE SUITE
- LOW MAINTENANCE REAR GARDEN
- AGENT CODE : PA011

Score	Energy rating	Current	Potential
92+	<div><div></div><div>Energy efficiency chart</div><div>A</div></div>		
81-91	<div><div></div><div>B</div></div>		<div><div></div><div>85 B</div></div>
69-80	<div><div></div><div>C</div></div>	<div><div></div><div>70 C</div></div>	
55-68	<div><div></div><div>D</div></div>		
39-54	<div><div></div><div>E</div></div>		
21-38	<div><div></div><div>F</div></div>		
1-20	<div><div></div><div>G</div></div>		



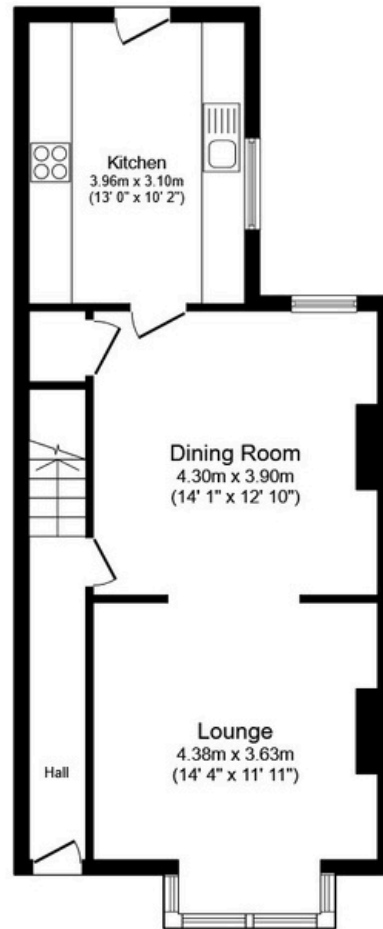


Rose Lane,
Mynydd Isa



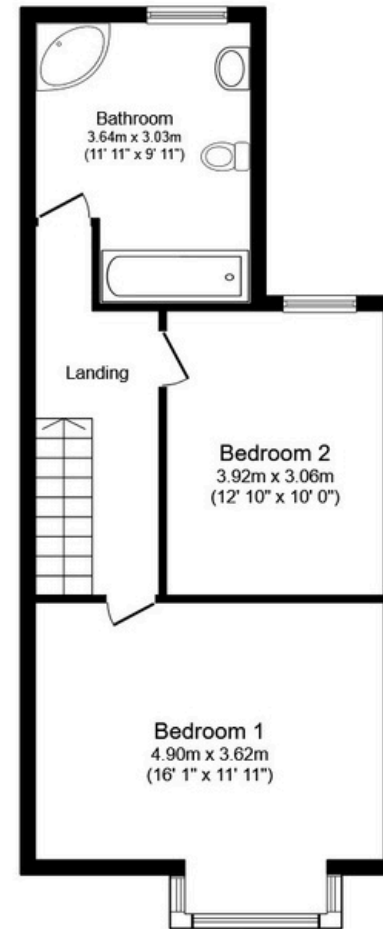






Ground Floor

Floor area 51.7 sq.m. (556 sq.ft.)



First Floor

Floor area 51.6 sq.m. (556 sq.ft.)

Total floor area: 103.3 sq.m. (1,112 sq.ft.)

This floor plan is for illustrative purposes only. It is not drawn to scale. Any measurements, floor areas (including any total floor area), openings and orientations are approximate. No details are guaranteed, they cannot be relied upon for any purpose and do not form any part of any agreement. No liability is taken for any error, omission or misstatement. A party must rely upon its own inspection(s). Powered by www.Propertybox.io