

TO LET



Samuel Estates
Lettings & Sales

Hexagon Apartments, Covent Garden, WC2B

£5,500.00 PCM

 **2**

 **2**

Samuel Estates
YOUR PROPERTY • OUR BUSINESS

Property Description

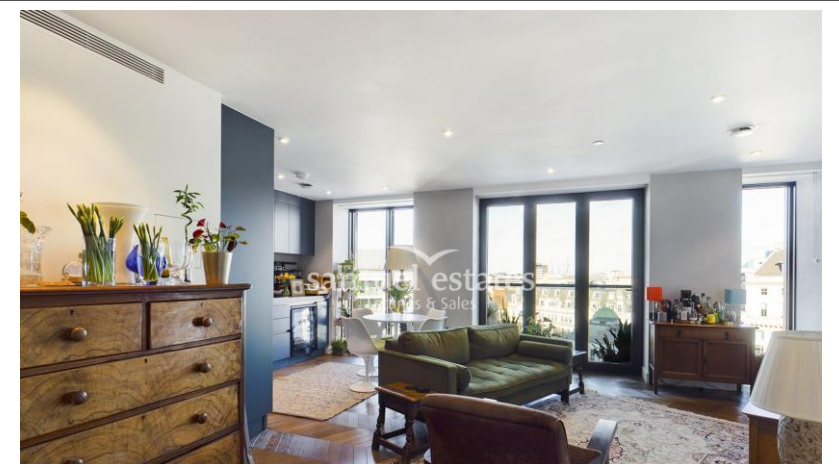
This stunning two bedroom apartment is situated on the 10th floor of the prestigious Hexagon Building in the heart of Covent Garden. Ideally located near the West End, Bloomsbury, and the City, the property is within walking distance of Covent Garden and Holborn Underground stations, providing excellent transport links via the Piccadilly and Central lines.

Finished to a high contemporary standard, the apartment features floor-to-ceiling windows, chevron timber flooring, bespoke joinery, and elegant industrial-inspired detailing throughout. The stylish kitchen is fitted with premium integrated appliances, including a Miele combi microwave oven, induction hob, dishwasher, and fridge-freezer.

The bright and spacious living areas benefit from hardwood flooring, high-efficiency lighting, and a programmable lighting system, while the luxurious bathrooms offer marble tiling, vanity units, heated towel rails, and electric underfloor heating.

Disclaimer

Samuel Estates their clients and any joint agents give notice that they are not authorised to make or give any representation or warranties in relation to the property. No responsibility is assumed for any statement that may be made in these lettings particulars. These particulars do not form any part of any offer or contract and must not be relied upon as statements or representation of fact. Any distances, measurements or areas are approximate. The text, photographs and floorplans are for guidance only and not comprehensive in any way. Samuel Estates have not tested any services, appliances or facilities and prospective tenants must satisfy themselves by inspection.



Material Information

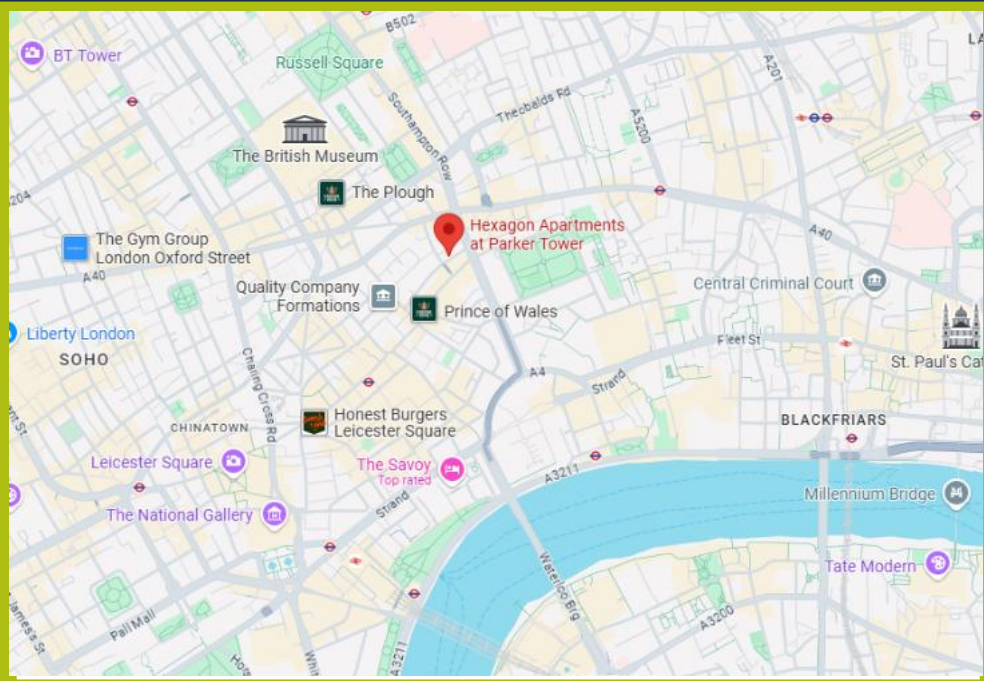
Date Available – 01/07/2026

Holding deposit amount – £1269.23

Security Deposit amount (Five weeks rent) – £7,615.38

Council Tax Band – G

Local Authority – Camden Council



Property Type

Apartment (Purpose Build)



Construction Type

Brick



Parking

No Parking



Listed Building Status

None



Water Supply

Thames Water



Electricity Supply

Mains



Heating

Communal



Broadband

Good Coverage



Mobile Signal

Good Coverage



Flood Risk

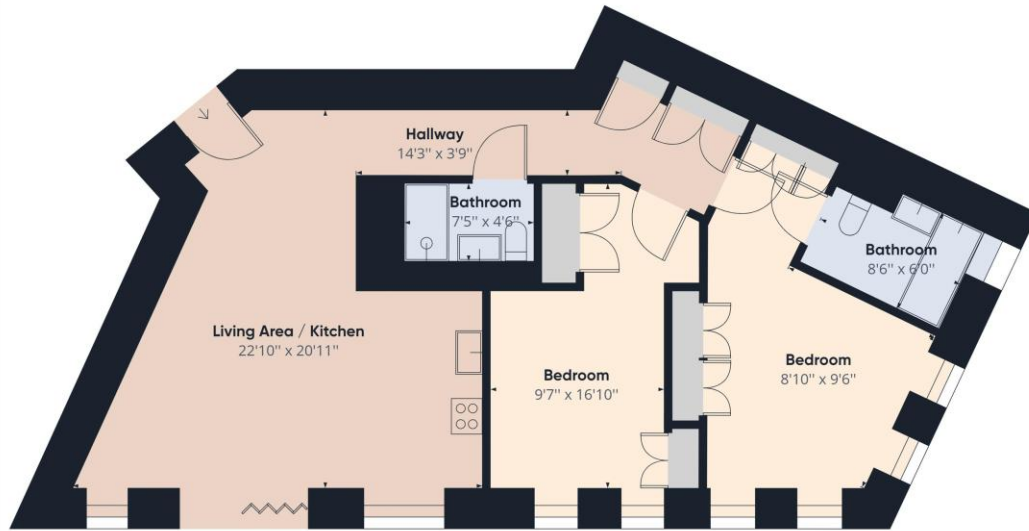
Has the property been flooded in the past five years: NO

Level of Risk: None



Proposed Development in Immediate Locality?

None



Approximate total area⁽¹⁾
873.94 ft²

(1) Excluding balconies and terraces

While every attempt has been made to ensure accuracy, all measurements are approximate, not to scale. This floor plan is for illustrative purposes only.

GIRAFFE360



Energy Efficiency Rating

	Current	Potential
Very energy efficient - lower running costs		
92-100 A		
81-91 B	85	85
69-80 C		
55-68 D		

Balham
45 Bedford Hill,
London, SW12 9EY
☎ 020 8673 4666

Colliers Wood & Wimbledon
30 Watermill Way,
London, SW19 2RT
☎ 020 8090 9000

Streatham
432/434 Streatham High Road
London, SW16 3PX
☎ 020 8679 9889

