



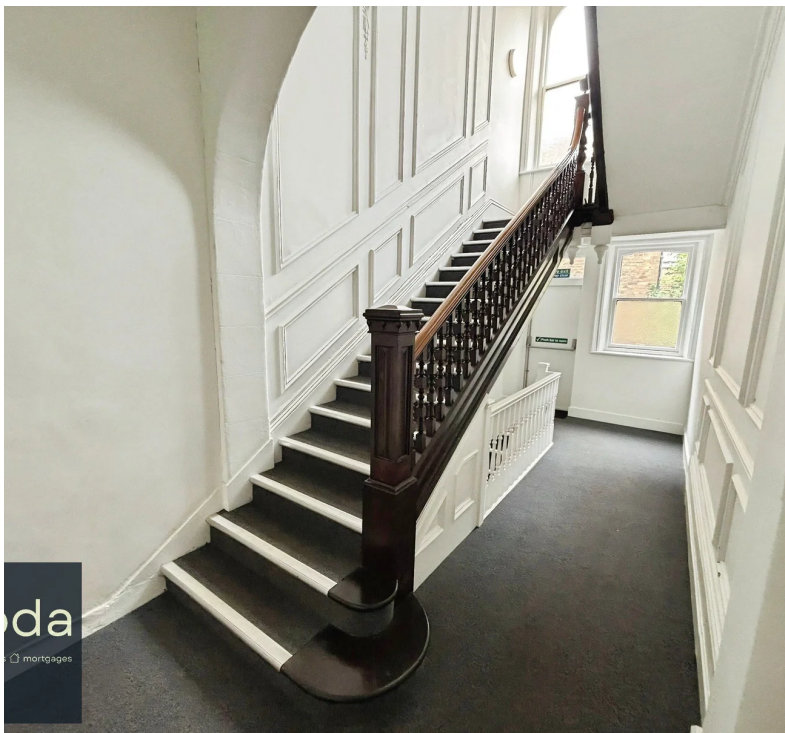
moda

sales lettings mortgages

Alexandra Drive, Liverpool, Merseyside, L17 8AB

Liverpool

Offers Over
£105,000

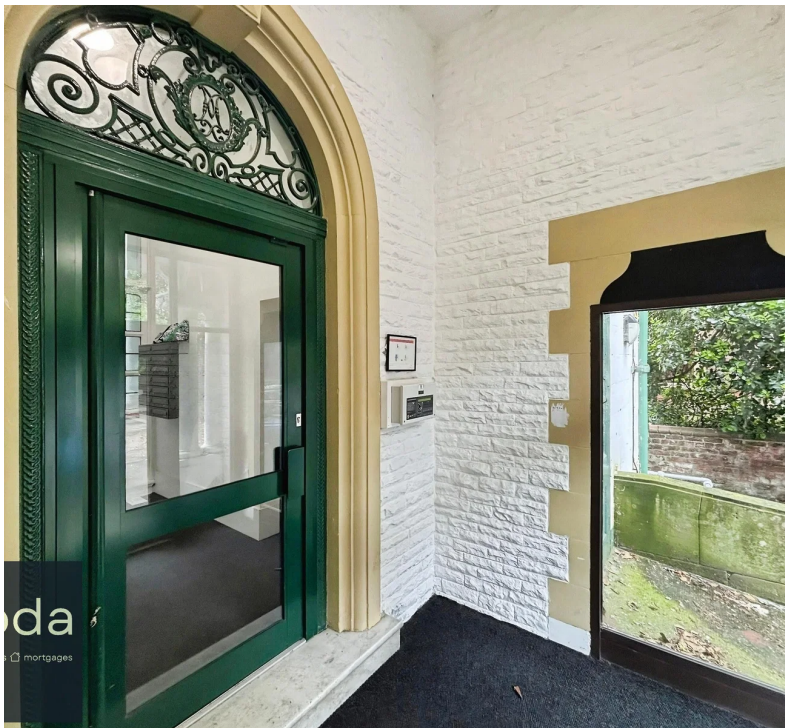


Offers Over £105,000 | No Chain | Ideal Investment Opportunity

Moda Estates are delighted to present this well-positioned one-bedroom first-floor apartment situated within the sought-after Alexandra Drive area of Aigburth, Liverpool.

Ideally located just a short walk from the vibrant amenities, independent cafés, bars and restaurants of Lark Lane, together with the expansive green spaces of Sefton Park, this property offers an excellent opportunity for both investors and first-time buyers alike.

The accommodation briefly comprises an entrance hallway, bright and spacious lounge, fitted kitchen, generously sized double bedroom and a bathroom suite. Positioned on the first floor, the apartment benefits from an abundance of natural light and a practical layout throughout.



Offered to the market with no onward chain, the property presents an attractive investment opportunity with strong rental demand in the area, whilst also appealing to owner-occupiers seeking a home in one of South Liverpool's most desirable locations.

Early viewing is highly recommended.

Key Features:

One Bedroom First Floor Apartment
Sought-After Alexandra Drive Location
Walking Distance to Lark Lane & Sefton Park

Spacious Lounge
Fitted Kitchen
No Onward Chain
Ideal Investment Opportunity
Excellent Transport Links
Offers Over £105,000

Council Tax Band: B

Tenure: Leasehold

Bedrooms: 1 | Bathrooms: 1 | Receptions: 1

Offers Over £105,000 | No Chain | Ideal Investment Opportunity

Moda Estates are delighted to present this well-positioned one-bedroom first-floor apartment situated within the sought-after Alexandra Drive area of Aigburth, Liverpool.

Ideally located just a short walk from the vibrant amenities, independent cafés, bars and restaurants of Lark Lane, together with the expansive green spaces of Sefton Park, this property offers an excellent opportunity for both investors and first-time buyers alike.

Offers Over £105,000 | No Chain | Ideal Investment Opportunity

Moda Estates are delighted to present this well-positioned one-bedroom first-floor apartment situated within the sought-after Alexandra Drive area of Aigburth, Liverpool.

Ideally located just a short walk from the vibrant amenities, independent cafés, bars and restaurants of Lark Lane, together with the expansive green spaces of Sefton Park, this property offers an excellent opportunity for both investors and first-time buyers alike.

The accommodation briefly comprises an entrance hallway, bright and spacious lounge, fitted kitchen, generously sized double bedroom and a bathroom suite. Positioned on the first floor, the apartment benefits from an abundance of natural light and a practical layout throughout.

Offered to the market with no onward chain, the property presents an attractive investment opportunity with strong rental demand in the area, whilst also appealing to owner-occupiers seeking a home in one of South Liverpool's most desirable locations.

Early viewing is highly recommended.

Key Features:

One Bedroom First Floor Apartment
Sought-After Alexandra Drive Location
Walking Distance to Lark Lane & Sefton Park
Spacious Lounge
Fitted Kitchen
No Onward Chain
Ideal Investment Opportunity
Excellent Transport Links
Offers Over £105,000

- One Bedroom First Floor Apartment
- Sought-After Alexandra Drive Location
- Walking Distance to Lark Lane & Sefton Park
- Spacious Lounge

