



Grove Crescent, KT1

£825,000

Situated on a popular residential street is this well presented end of terrace townhouse offering 1,509 sq ft of accommodation over three floors. The property has been tastefully refurbished by the current owners and is just a short walk from the River Thames and Fairfield Park, perfect for recreational pursuits.

Grove Crescent is centrally situated within Kingston Upon Thames and is ideally positioned for Richmond Park, Kingston and Surbiton mainline train stations and the areas extensive shopping and leisure amenities including both high street and artisan shops, independent coffee shops and fabulous bars and restaurants.

Features

- Four Bedrooms
- Two Reception Rooms
- Kitchen/Dining Room
- Two Bath/Shower Rooms
- Two Off-Street Parking Spaces
- Large Storage/Utility Area
- Private Rear Garden



Grove Crescent, KT1

The ground floor accommodation has underfloor heating throughout and consists of an entrance hall with separate cloakroom and staircase leading to the first floor reception room, a front reception room leading to a fitted kitchen/dining room with sliding doors to the rear garden and an extended storage and utility area with doors leading to the front and rear gardens.

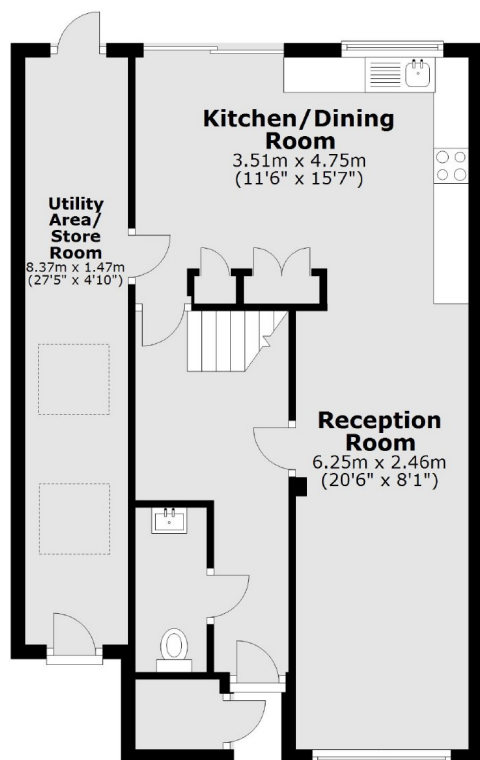
The first floor accommodation consists of a spacious reception room with a staircase leading to the second floor landing, a master double bedroom with fitted wardrobes and en suite shower room with bluetooth speaker mirror. The second floor accommodation consists of a landing, a double bedroom with fitted wardrobe, a second double bedroom, a large single bedroom and a family bathroom with bluetooth speaker mirror, remote controlled WiFi screen for Netflix streaming, and underfloor heating.

Outside to the front is a small garden with a hardstanding driveway providing off street parking for two vehicles with access to the utility area. To the rear is a low maintenance private walled garden which is laid to patio and lawn with flower and shrub displays.

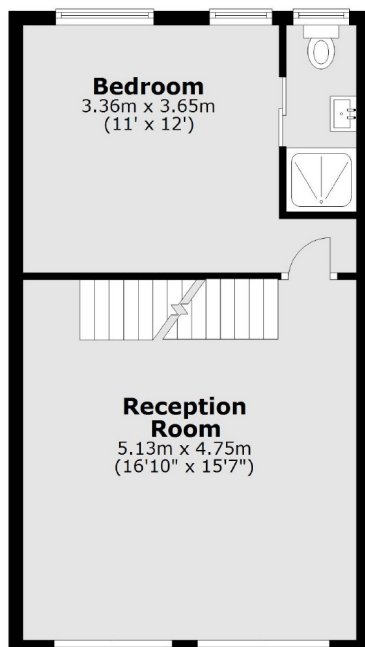


Grove Crescent, Kingston Upon Thames, KT1

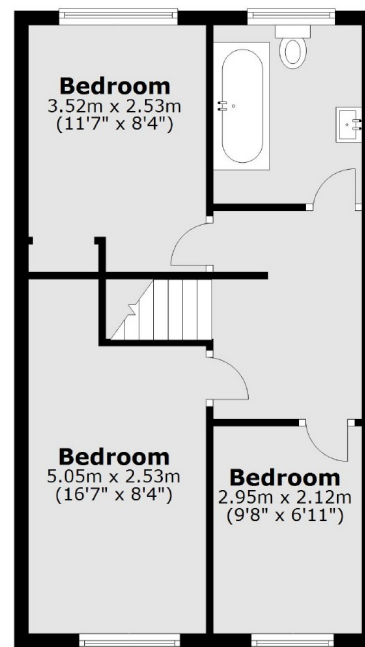
Ground Floor



First Floor



Second Floor



Main area: Approx. 140.2 sq. metres (1509.5 sq. feet)
Plus storage, approx. 1.2 sq. metres (13.0 sq. feet)