



Apartment 30 Fairthorn, 117 Townhead Road, Dore, Sheffield, S17 3AJ

Saxton Mee

# 117 Townhead Road

## Dore

Offers Around

**£120,000**

A two Bedroom, two Bathroom Apartment in this popular exclusive retirement development for the over 60s with staff on site 24-7.

Situated on the Second Floor with attractive side facing view with its own Balcony, parking space and within easy access of the excellent amenities of Dore Village.

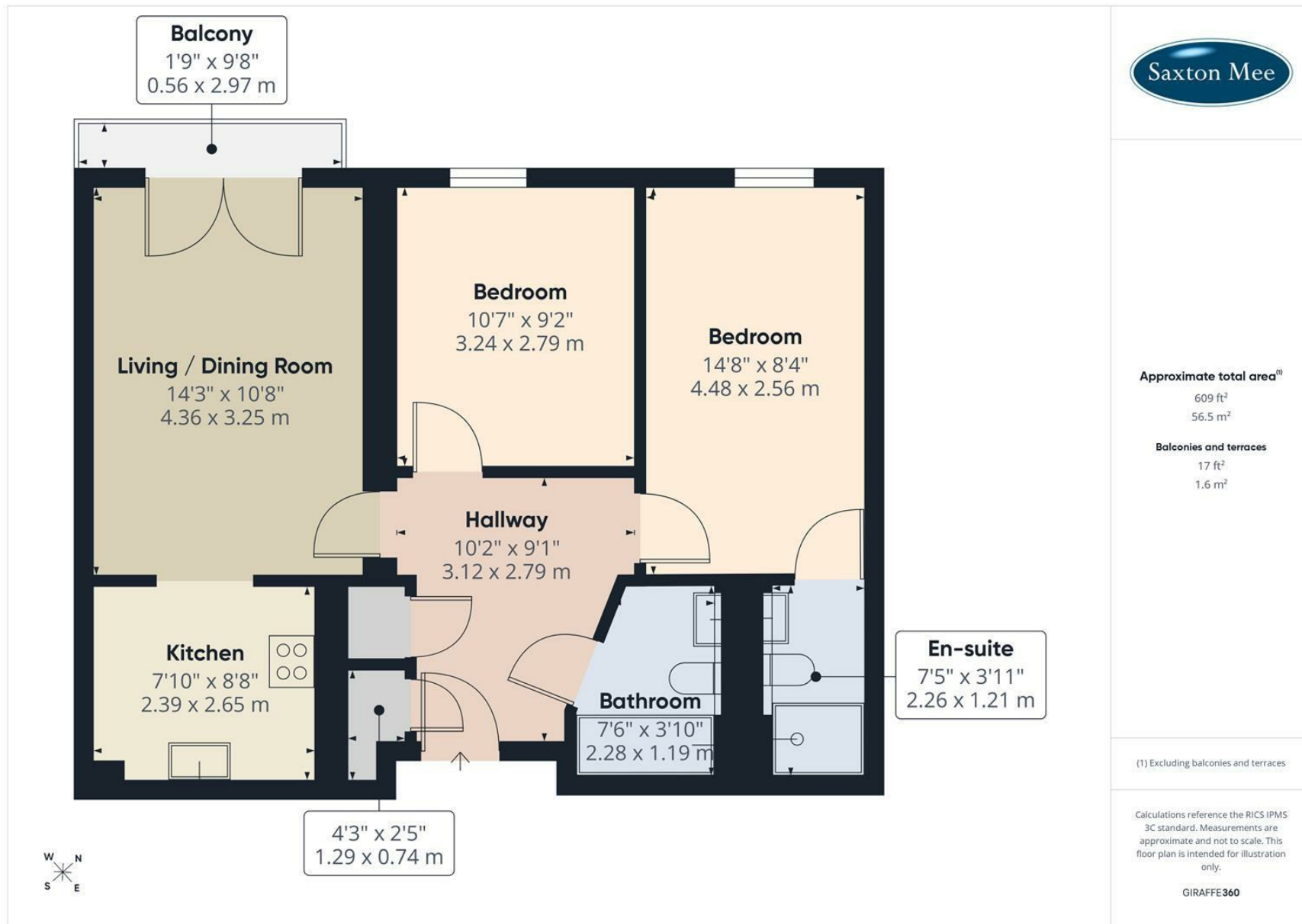
Private Entrance Hall, open plan Living room/Dining room with patio doors to private Balcony, well-fitted Kitchen with range of built-in appliances. Master Bedroom with Ensuite shower/wet room, double Bedroom 2 and main Bathroom with full suite. Allocated Parking and communal residents Lounge and lovely communal grounds.

Well-being service, plus further assistance if required, and first-class communal facilities.

- Second Floor Apartment with Lift Access
- Two Bedrooms Two Bathrooms
- Exclusive Retirement Development for Over 60s
- Allocated Parking
- Master Bedroom with Ensuite Shower/Wet Room
- Wellbeing Service and Further Care Facilities Available
- Staff on Site 24/7







While we endeavour to make our sales particulars fair, accurate and reliable, they are only a general guide to the property and, accordingly, if there is any point, which is of particular importance to you, please contact the relevant office. The Agents have not tested any apparatus, equipment, fittings or services and so cannot verify they are in working order. The buyer is advised to obtain verification. Please note all the measurement details are approximate and should not be relied upon as exact. All plans, floor plans and maps are for guidance purposes only and are not to scale. Under no circumstances should they be relied upon as exact or for use in planning carpets and other such fixtures, fittings or furnishings. YOUR HOME IS AT RISK IF YOU DO NOT KEEP UP REPAYMENTS ON A MORTGAGE OR OTHER LOAN SECURED ON IT. 'A Life Assurance policy may be requested.' 'Written Quotations of credit terms available on request.'

Banner Cross  
T: 0114 268 3241  
E: [bannercross@saxtonmee.co.uk](mailto:bannercross@saxtonmee.co.uk)  
[www.saxtonmee.co.uk](http://www.saxtonmee.co.uk)

Hathersage  
T: 01433 650009  
E: [hathersage@saxtonmee.co.uk](mailto:hathersage@saxtonmee.co.uk)

Bakewell  
T: 01629 815307  
E: [bakewell@saxtonmee.co.uk](mailto:bakewell@saxtonmee.co.uk)

Matlock  
T: 01629 828250  
E: [matlock@saxtonmee.co.uk](mailto:matlock@saxtonmee.co.uk)

