



Park View Road, W5

£650,000

A fabulous two double bedroom, two bathroom second floor apartment within a private gated development. There is a large reception room with dual aspect views and two balconies, a separate large eat-in kitchen, an en-suite bathroom, share of freehold and a garage.

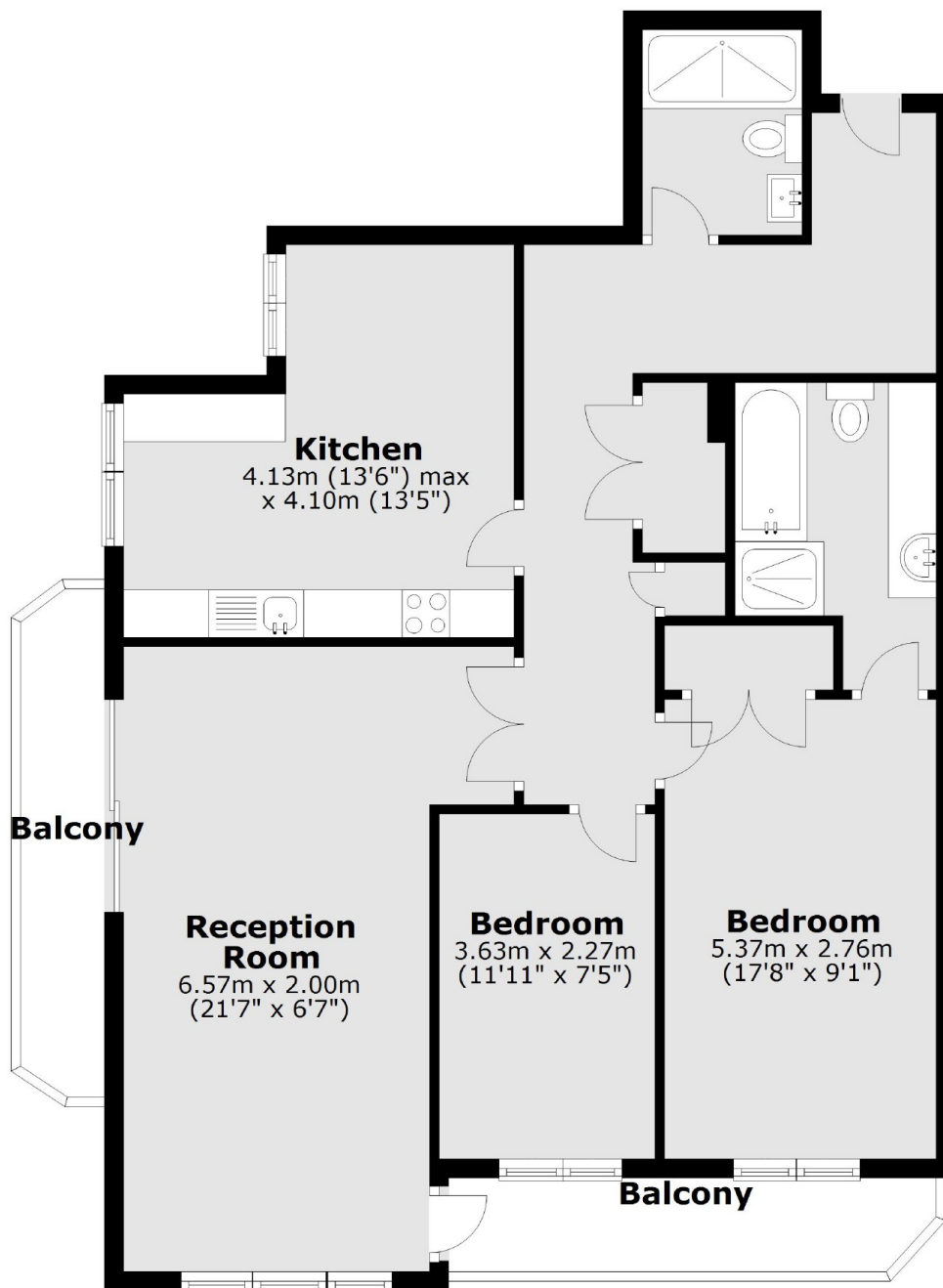
Park View Road is one of Ealing's premier residential locations with easy access to Ealing Broadway for transport, green spaces such as Hanger Hill Park and close proximity to great local schools.

Features

- Two Bedrooms
- Two Bathrooms
- Twin Balconies
- Lift Access
- No Onward Chain
- Garage

Park View Road, London, W5

First Floor



Main area: Approx. 88.9 sq. metres (956.7 sq. feet)
Plus balconies, approx. 10.6 sq. metres (114.1 sq. feet)