



Gunnersbury Mews, W4

£1,373 Per week

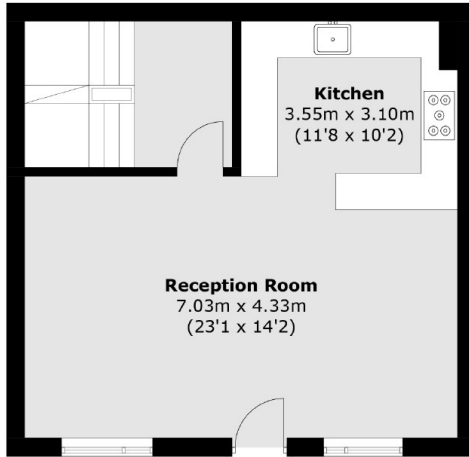
A five bedroom town house in a private gated development arranged over four floors and offering just under 2,000 sq ft with underfloor heating, and is located close to Gunnersbury station and opposite Chiswick Business Park

Perfect for access to Chiswick High Road, Gunnersbury tube station, the A4 and Chiswick Business Park all of which are yards from the doorstep.

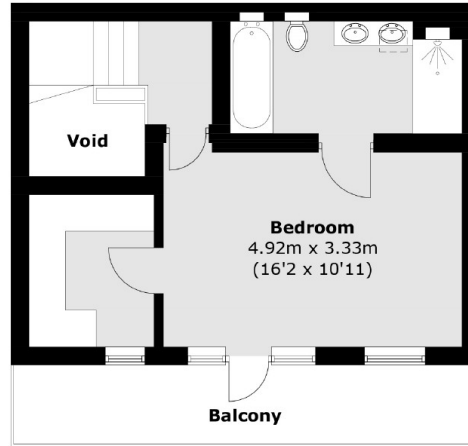
Features

- Five Bedrooms
- Three Bathrooms
- High Ceilings
- Underfloor Heating
- Central Location
- Gated Development

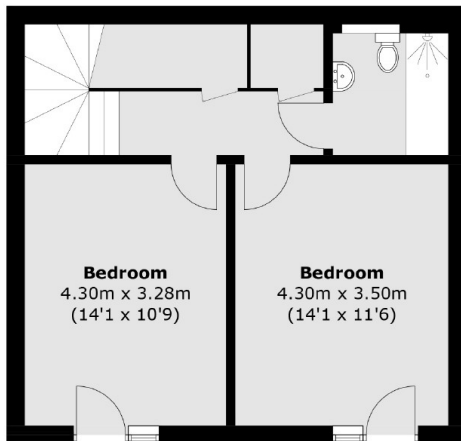
Gunnersbury Mews, London, W4



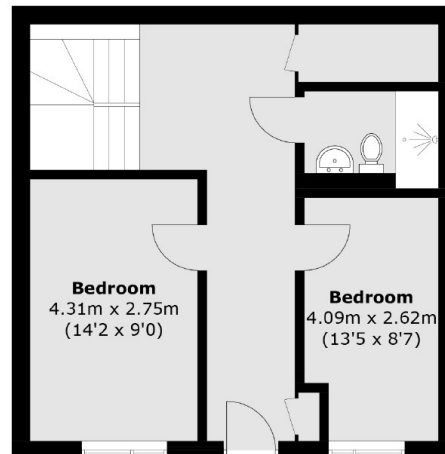
First Floor



Second Floor



Lower Ground Floor



Ground Floor

Total area (approx.): 175.7 sq. m (1,891.1 sq. ft)
(Excluding Void)
Balcony: 9.9 sq. m (106.6 sq. ft)