

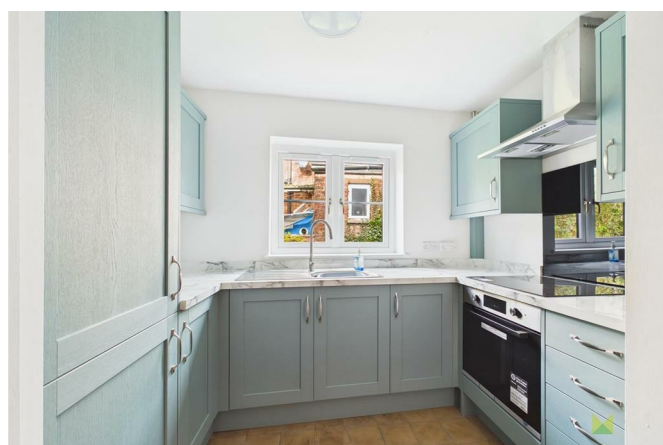
Spring Bank Cottage Criftins Ellesmere SY12 9LW



1 Bedroom Cottage
£625 PCM

The features

- WELL PRESENTED ONE BEDROOM COTTAGE
- ENTRANCE PORCH, LOUNGE, NEWLY FITTED KITCHEN
- DRIVEWAY WITH OFF ROAD PARKING AND GARDEN
- RURAL LOCATION | TOWNS WITH AMENITIES NEARBY
- BEDROOM AND NEWLY FITTED SHOWER ROOM
- EARLY INTEREST ADVISED



*** CHARMING ONE BEDROOM COTTAGE ***

An opportunity to rent this beautifully presented one bedroom cottage occupying a rural position just a short drive from the nearby town of Ellesmere and Market Town of Oswestry which both boast a wealth of amenities.

Briefly comprising of entrance porch, lounge, kitchen, bedroom and shower room.

Early interest advised.

Property details

LOCATION

ENTRANCE PORCH

Being of brick base and sealed unit with solid roof. Tiled flooring, door leading into,

LOUNGE

With window to the front and side aspect, feature fireplace with brick surround and tiled hearth, exposed ceiling beams. Two storage cupboards, laminate flooring. Radiator, door leading off,

INNER HALLWAY

With two windows and door leading out to the side aspect. Tiled flooring. Radiator, door opening to airing cupboard, doors leading off,

KITCHEN

Newly fitted kitchen attractively fitted with a range of shaker style fronted base level units comprising of cupboards and drawers with work surface over. Integrated oven/ grill with four ring hob and extractor hood over. Integrated fridge/ freezer with matching fascia panel. Further range of wall mounted units, window to the side aspect, storage cupboard and tiled flooring.

BEDROOM

With window to the rear aspect. Radiator.

SHOWER ROOM

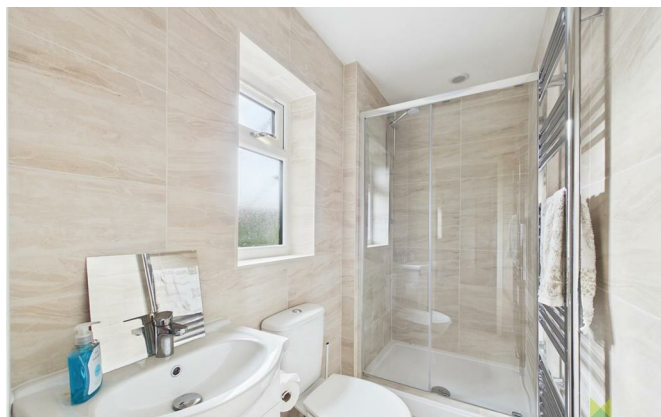
With window to the side aspect and suite comprising of shower cubicle, WC and wash hand basin. Tiled walls & flooring and heated towel rail.

OUTSIDE

To the front of the property there is ample parking, area laid with lawn and paved patio. To the side of the property there is an oil tank and greenhouse. Lovely rural aspect and enclosed with wall.

Spring Bank Cottage , Criftins, Ellesmere, SY12 9LW.

1 Bedroom Cottage
£625 PCM





Judy Bourne

Director at Monks
judy@monks.co.uk

Get in touch

Call. 01743 361422
Email. info@monks.co.uk
Click. www.monks.co.uk

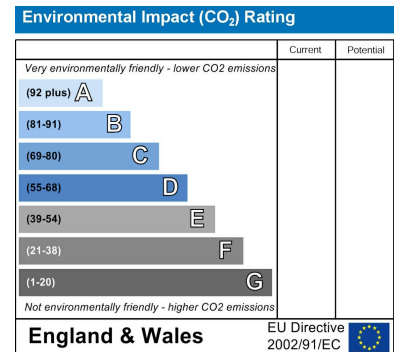
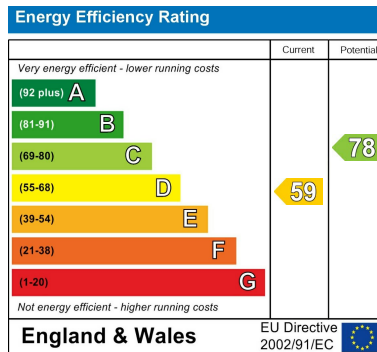
Shrewsbury office

10a-11 Shoplatch,
Shrewsbury, Shropshire, SY1

We're available 7 days a week

HOME – four words that define who,
and what we are:

Honest, Original, Motivated, Empathetic



Monks for themselves and for the vendors of this property, whose agents they are give notice that:

- These particulars provide a general outline only for the guidance of intended purchasers and do not constitute part of an offer or contract.
- All descriptions, dimensions and distances are approximate, references to state and condition, relevant permissions for use and occupation and other details are provided in good faith and believed to be correct.
- No person in the employment of Monks has any authority to make or give any representation or warranty whatever in relation to this property.
- Electricians and other appliances mentioned in these particulars have not been tested by Monks. Therefore prospective purchasers must satisfy themselves as to their working order.