

Edgcombe Road, St Austell, PL25 5DX

£245,000

3 2 1



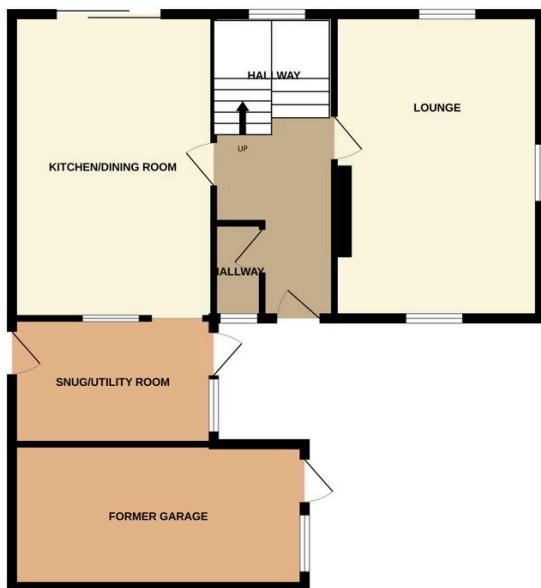
This is a 3 bedroom detached dormer house, within walking distance of St Austell's main town centre. The property is positioned on a corner plot with ample parking, 2 storage sheds and low maintenance, but of a good size rear garden.

EPC - E

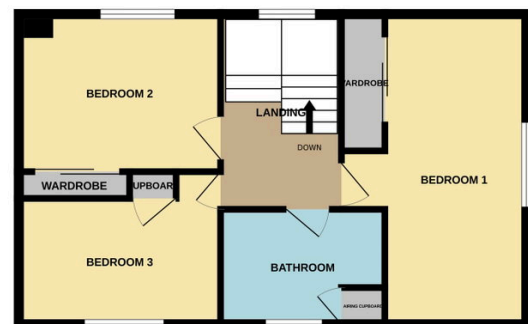
Key Features

- Available with Vacant possession, No ongoing chain
- Walking distance to main town centre and amenities
- Hallway, Lounge
- Utility/snug room
- Double Glazed
- Detached 3 Bedroom dormer house
- Scope for some updating
- Kitchen/dining room
- 3 bedrooms, Bathroom with electric shower
- Driveway/hard standing parking. Garage converted to provide additional room with W/C

GROUND FLOOR



1ST FLOOR



Whilst every attempt has been made to ensure the accuracy of the floorplan contained here, measurements of doors, windows, rooms and any other items are approximate and no responsibility is taken for any error, omission or mis-statement. This plan is for illustrative purposes only and should be used as such by any prospective purchaser. The services, systems and appliances shown have not been tested and no guarantee as to their operability or efficiency can be given.
Made with Metropix ©2026