

## Charlotte Street, W1T

£634 Per week

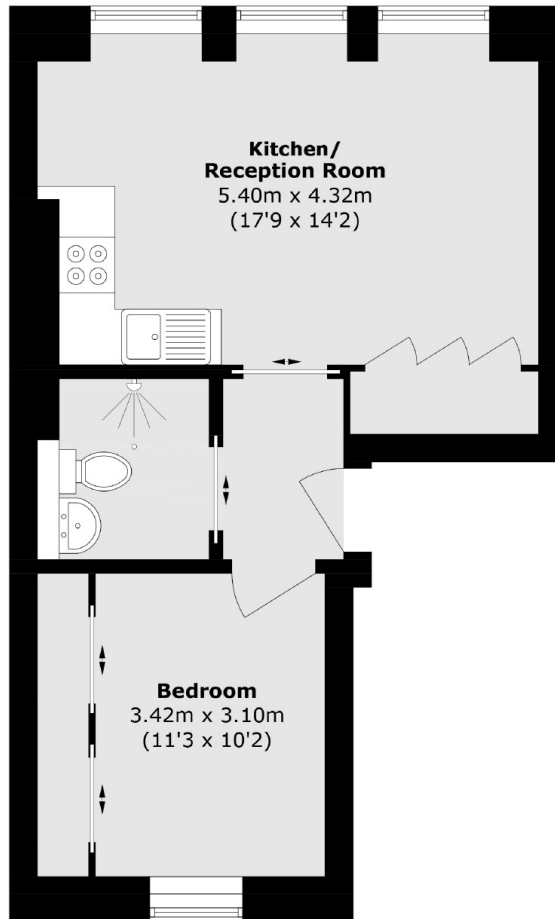
Exceptionally bright one bedroom apartment, located in the heart of Fitzrovia. The property has an open plan kitchen/reception area with wooden floors throughout the property.

Local Stations are Goodge Street and Tottenham Court Road with Central, Northern and the future Elizabeth Line which will provide fast links to The City and London Heathrow Airport.

### Features

- Central Location
- Wooden Floors
- One Bedroom
- Unfurnished
- Open Plan
- Modern

# Charlotte Street, London, W1T



Total area (approx.): 39.0 sq. m (420.0 sq. ft)