



## Gainsford Street, SE1

£2,600 Per calendar month

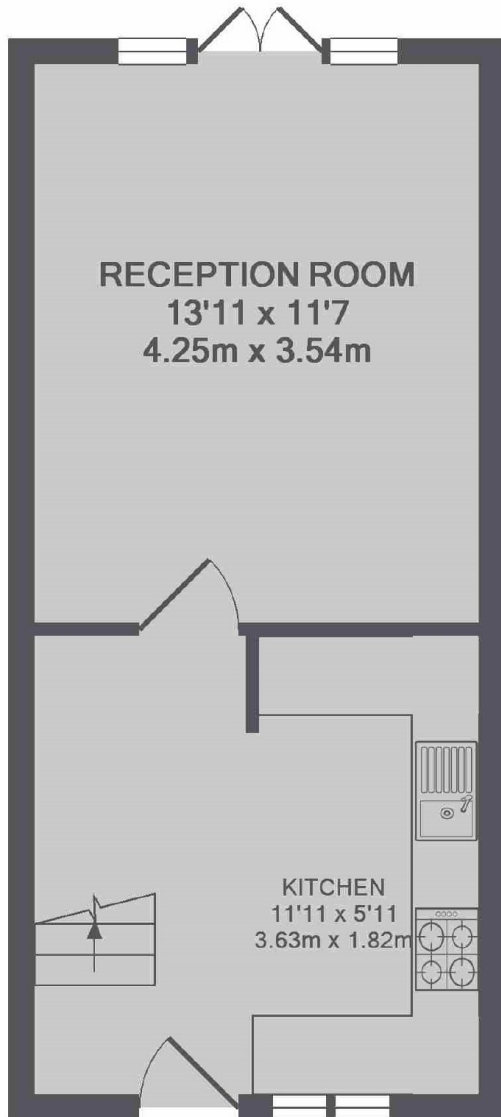
A charming two double bedroom terraced house in the very heart of Shad Thames. Houses in the area are few and far between. Presented in beautiful condition this property would be ideal for a young family, a couple or two professional sharers.

Shad Thames is trendy and those who know it, love it. You can walk into the city, over Tower Bridge or get the underground from London Bridge or Bermondsey.

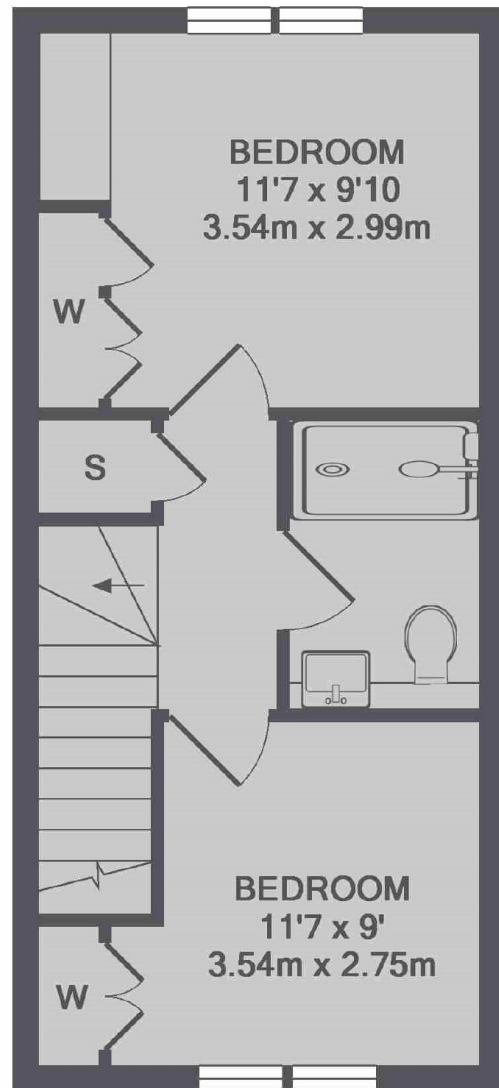
### Features

- Two Double Bedrooms
- Private Garden
- Off Street Parking
- Terraced House
- Wood Flooring
- Dishwasher

Gainsford Street,  
London, SE1



GROUND FLOOR



1ST FLOOR

TOTAL APPROX. FLOOR AREA 614 SQ.FT. (57.0 SQ.M.)