

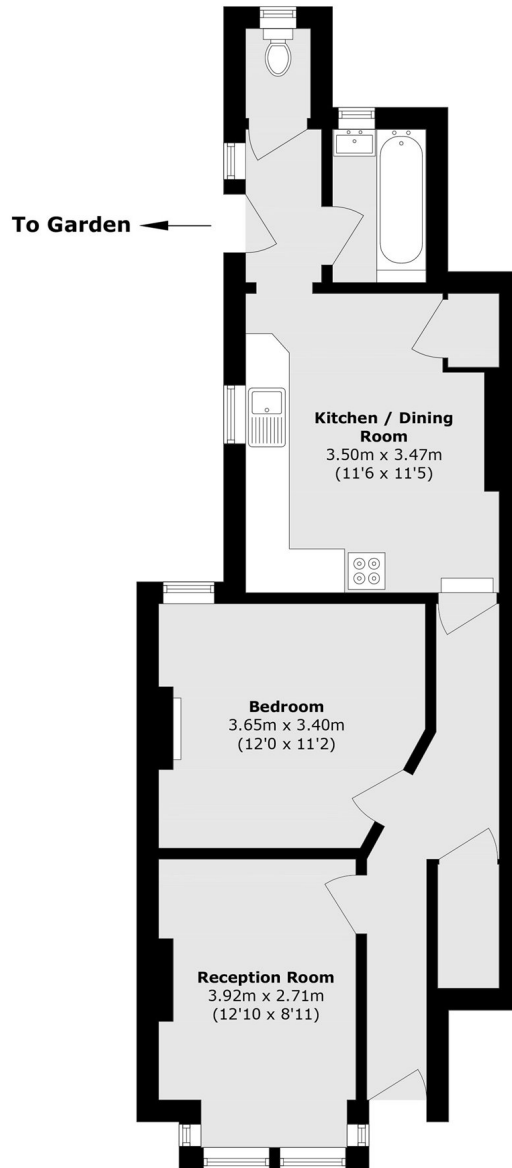


## Grosvenor Road, W7

£400,000

This one bedroom ground floor garden flat is offered to the market with no onward chain. The property has a private entrance, long lease and a larger than average private west facing garden.

Conveniently located close to the shops, amenities and bus links on West Ealing Broadway and within catchment of Oaklands primary and Elthorne Park high schools. Hanwell (Elizabeth line) station is less than a mile away.



Total area (approx.): 52.8 sq. m (568.3 sq. ft)

Robertson Smith & Kempson Hanwell Sales  
69 Greenford Avenue,  
London, W7 1LL  
020 8566 2339  
[hanwellsales@robertsonsmithandkempson.co.uk](mailto:hanwellsales@robertsonsmithandkempson.co.uk)

Energy Rating: D. We aim to make our particulars both accurate and reliable. However they are not guaranteed; nor do they form part of an offer or contract. If you require clarification on any points then please contact us, especially if you're traveling some distance to view. Please note that appliances and heating systems have not been tested and therefore no warranties can be given as to their good working order.