



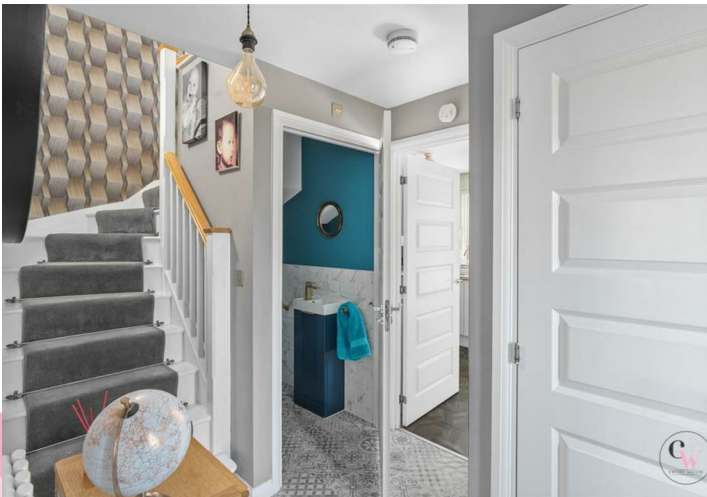
ESTATE AGENTS

[www.cwestateagents.co.uk](http://www.cwestateagents.co.uk)



## Nuthatch Close, Winsford CW7 4FJ

Offers in excess of £250,000



01606 514 152 [info@cwestateagents.co.uk](mailto:info@cwestateagents.co.uk)

@CWestateAgent @CWestateAgents

# Nuthatch Close

, Winsford, CW7 4FJ

Offers in excess of £250,000



## Entrance Hall

## Lounge

15'6 x 10'7 (4.72m x 3.23m)

## Kitchen Diner

15'6 x 9'8 (4.72m x 2.95m)

## Downstairs W.C.

## Landing

## Bedroom One

10'10 x 10'7 (3.30m x 3.23m)

## Ensuite

## Bedroom Two

8'10 x 8'9 (2.69m x 2.67m)

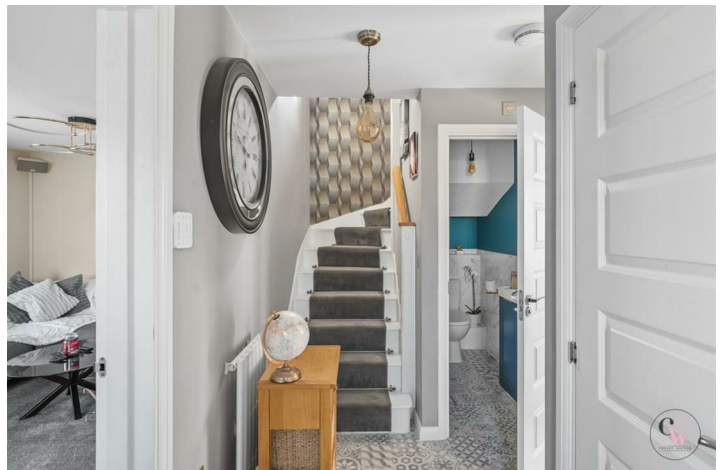
## Bedroom Three

8'9 x 6'5 (2.67m x 1.96m)

## Family Bathroom

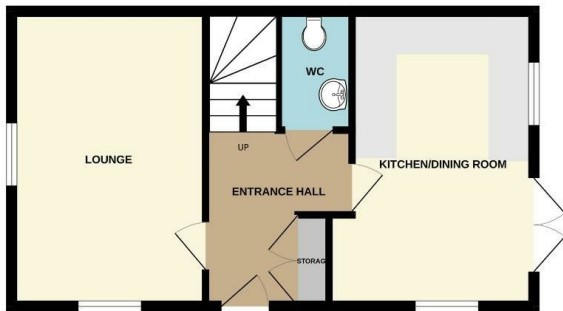
## Externally

To the front of the home it has parking for several vehicles and an enclosed garden that wraps around the sides and rear of the home.

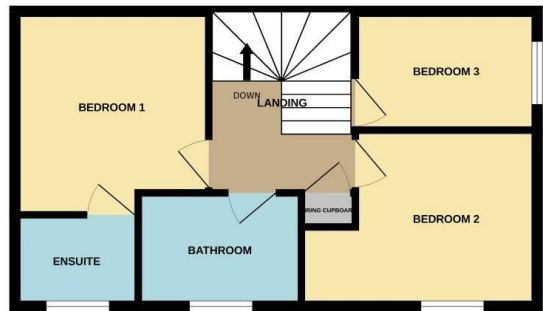


# Floor Plan

GROUND FLOOR



1ST FLOOR



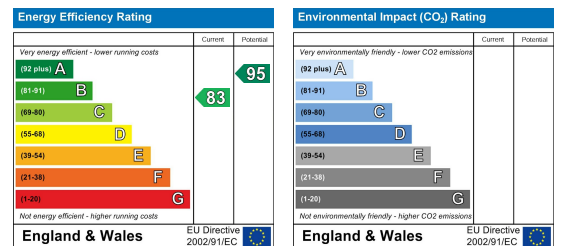
THREE BEDROOM DETACHED

Whilst every attempt has been made to ensure the accuracy of the floorplan contained here, measurements of doors, windows, rooms and any other items are approximate and no responsibility is taken for any error, omission or mis-statement. This plan is for illustrative purposes only and should be used as such by any prospective purchaser. The services, systems and appliances shown have not been tested and no guarantee as to their operability or efficiency can be given.  
Made with Metropix ©2026

## Viewing

Please contact us on 01606 514 152 if you wish to arrange a viewing appointment for this property or require further information.

## Energy Efficiency Graph



These particulars, whilst believed to be accurate are set out as a general outline only for guidance and do not constitute any part of an offer or contract. Intending purchasers should not rely on them as statements of representation of fact, but must satisfy themselves by inspection or otherwise as to their accuracy. No person in this firm's employment has the authority to make or give any representation or warranty in respect of the property.

01606 514 152
 [info@cwestateagents.co.uk](mailto:info@cwestateagents.co.uk)  
 @CWestateAgent
 @CWestateAgents