



Dorset House, Gloucester Place, NW1 5AB  
£2,300 PCM

**coopers**  
OF LONDON EST. 1986

# Dorset House, Gloucester Place, NW1

- Available Now
- Fully Refurbished Throughout
- New Kitchen and New Bathroom
- Close To Transport Links
- Hot Water Included
- Spacious Studio Apt
- Key Phone Entry

**\*FULLY REFURBISHED - NEW KITCHEN AND BATHROOM\***  
**Available Now!**

A spacious studio apartment with separate sleeping area just recently refurbished throughout to a high standard. Dorset House is a 24 hour portered building and close to Marylebone, Baker Street and Regents Park.

Hot water included in the rent.

**\*FULLY REFURBISHED - NEW KITCHEN AND BATHROOM\***  
**Available Now!**

A spacious studio apartment with separate sleeping area just recently refurbished throughout to a high standard. Dorset House is a 24 hour portered building and close to Marylebone, Baker Street and Regents Park.

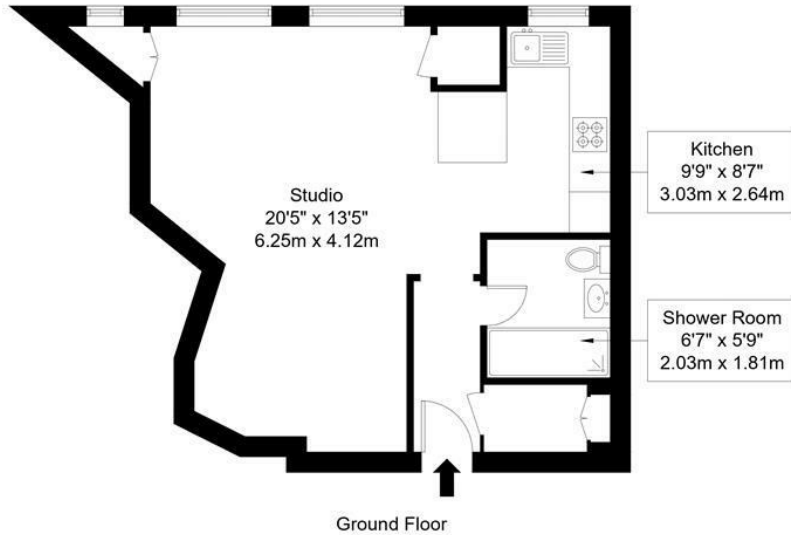
Hot water included in the rent.





# Gloucester Place, NW1 5AB

Approx Gross Internal Area = 39.72 sq m / 428 sq ft



Ref :

Copyright **BLEU  
PLAN**

The Floor plan is not to scale and measurements and areas shown are approximate and therefore should be used for illustrative purposes only. The plan has been prepared in accordance with the RICS code of Measuring Practice and whilst we have confidence in the information produced it must not be relied on. Maximum lengths and widths are represented on the floor plan. If there is any aspect of particular importance, you should carry out or commission your own inspection of the property.  
Copyright @ BLEUPLAN

Energy Efficiency Rating	Current	Potential
Very energy efficient - lower running costs		
(92 plus) <b>A</b>		
(81-91) <b>B</b>		
(69-80) <b>C</b>		
(55-68) <b>D</b>		
(39-54) <b>E</b>		
(21-38) <b>F</b>		
(1-20) <b>G</b>		
Not energy efficient - higher running costs		
<b>England &amp; Wales</b>	EU Directive 2002/91/EC	

Environmental Impact (CO <sub>2</sub> ) Rating	Current	Potential
Very environmentally friendly - lower CO <sub>2</sub> emissions		
(92 plus) <b>A</b>		
(81-91) <b>B</b>		
(69-80) <b>C</b>		
(55-68) <b>D</b>		
(39-54) <b>E</b>		
(21-38) <b>F</b>		
(1-20) <b>G</b>		
Not environmentally friendly - higher CO <sub>2</sub> emissions		
<b>England &amp; Wales</b>	EU Directive 2002/91/EC	

## Viewing

Strictly by appointment with:  
Coopers of London , 22 Cleveland Street,  
Fitzrovia, London W1T 4JB  
[info@coopersonlondon.co.uk](mailto:info@coopersonlondon.co.uk)

**0207 580 9658**

These particulars, whilst believed to be accurate are set out as a general outline only for guidance and do not constitute any part of an offer or contract. Intending purchasers should not rely on them as statements or representation of fact, but must satisfy themselves by inspection or otherwise as to their accuracy. No person in this firm's employment has the authority to make or give any representation or warranty in respect of the property.