



move
Property Sales & Lettings

Foxglove Grove, Cheltenham
Offers Over £650,000



Foxglove Grove

Cheltenham, Cheltenham

Immaculate 4-bed Redrow home (built 2020) on a quiet road with pond views, landscaped garden, garage, driveway, spacious living areas, and close to schools, amenities, and M5 access. Council Tax band: E

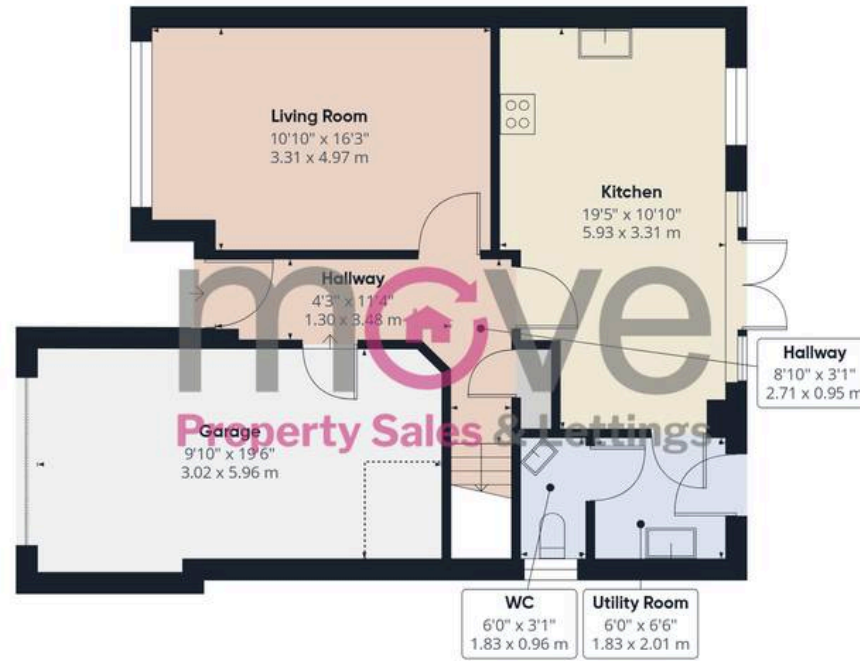
Tenure: Freehold

EPC Energy Efficiency Rating: B

EPC Environmental Impact Rating: B

- Four Double Bedrooms
- Built By Redrow Homes In 2020
- Attractive Outlook Over The Balancing Pond
- Close To Highly Regarded Local Schools Including Leckhampton High School
- High-Quality Kitchen/Dining Room With Integrated Appliances
- Principal Bedroom With En-Suite And Fitted Wardrobes
- Driveway Parking And Integrated Garage
- Sought-After Modern Development
- Excellent Access To M5 Commuter Routes And Transport Links
- Quiet No-Through Road Position





Floor 0



Floor 1



Approximate total area⁽¹⁾

1346 ft²
125 m²

Reduced headroom

15 ft²
1.4 m²

(1) Excluding balconies and terraces

Reduced headroom

----- Below 5 ft/1.5 m

Calculations reference the RICS IPMS 3C standard. Measurements are approximate and not to scale. This floor plan is intended for illustration only.

GIRAFFE360







Move Estate Agents Cheltenham

1 The Clarence Clarence Parade, Cheltenham - GL50 3NY

01242 257333

cheltenham@move.uk.net

move.uk.net/

move
Property Sales & Lettings