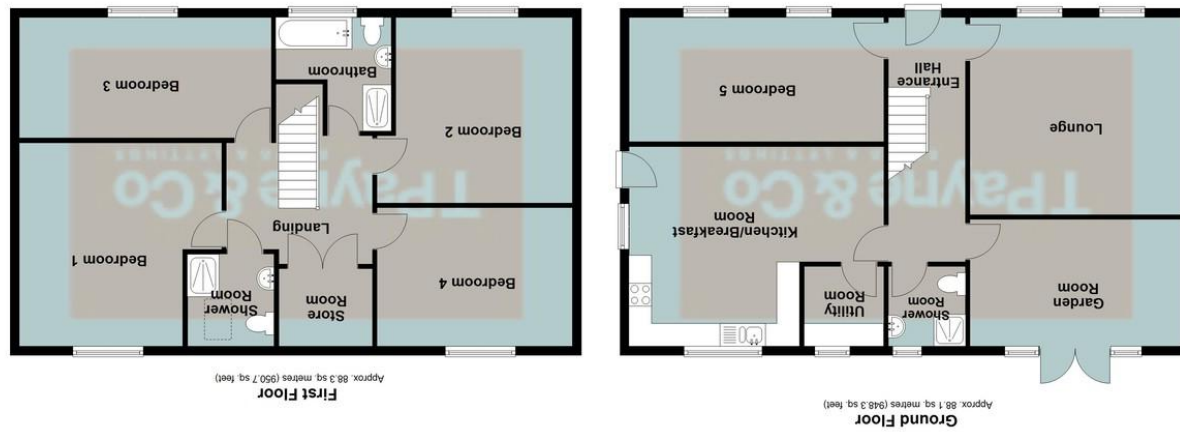


Total area: approx. 176.4 sq. metres (1899.0 sq. feet)



Ground floor

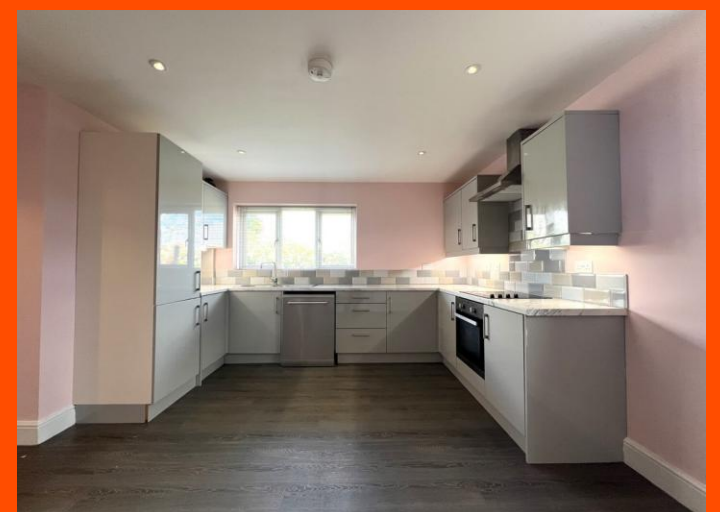
First floor

**TPayne & Co**  
SALES & LETTINGS

Chatters Office  
6 High Street, Chatters PE16 6BE  
Wisbech Office  
The Boatouse, Harbour Square, Wisbech PE13 3BH  
01354 696700 info@tpayneandco.co.uk  
www.tpayneandco.co.uk

**TPayne & Co**  
SALES & LETTINGS

01354 696700 info@tpayneandco.co.uk



**Jordans Close, March, Cambs, PE15 9GJ**

Cul-De-Sac Location - Detached House - 5 Bedrooms - Kitchen/Breakfast Room - 2 Reception Rooms - Ground Floor Shower Rooms & 2 First Floor Bathrooms - Utility Room - Enclosed Rear Garden - Driveway Parking - Available Now - EPC Rating: TBC - Council Tax Band E - Call To View (01354) 696700

**£1,650 pcm**



**Ground Floor**

**Entrance Hall**

Double glazed entrance door, radiator, laminate flooring, stairs to first floor and doors to:

**Lounge**

4.66m (15'3") x 4.33m (14'3")  
Two double glazed windows to front and radiator.

**Kitchen/Breakfast Room**

5.60m (18'5") max x 4.39m (14'5")  
Fitted with a matching range of base and eye level units with worktop space over, 1+1/2 bowl stainless steel sink with tiled splashbacks, dishwasher, space for fridge/freezer, built-in electric oven, built-in electric hob with extractor hood over, double glazed window to rear,

radiator, laminate flooring, double glazed door and window to side.

**Utility Room**

1.85m (6'1") x 1.75m (5'9")  
Fitted with cupboard with worktop space over, plumbing for washing machine, space for tumble dryer, double glazed window to rear and laminate flooring.

**Garden Room**

4.66m (15'3") x 2.79m (9'2")  
Double glazed double doors and windows to rear garden, radiator and laminate flooring.

**Bedroom 5**

5.60m (18'5") x 2.73m (8'11")  
Two double glazed windows to front and two radiators.

**Shower Room**

Fitted with three piece suite with comprising, tiled shower enclosure, pedestal wash hand basin with tiled splashback and low-level WC, double glazed window to rear, heated towel rail, radiator, laminate flooring and extractor fan.

**First Floor**

**Landing**

Stairs to ground floor and doors to:

**Bedroom 1**

4.47m (14'8") x 4.45m (14'7") max  
Double glazed window to rear and radiator.

**Bedroom 2**

4.08m (13'4") x 3.87 m (12'7")  
Double glazed window to front and radiator.

**Bedroom 3**

5.59m (18'4") x 2.71m (8'11")  
Double glazed window to front and radiator.

**Bedroom 4**

4.30m (14'1") x 3.10m (10'2")  
Double glazed window to rear and radiator.

**Bathroom**

Fitted with four piece suite with comprising, panelled bath, pedestal wash hand basin, tiled shower enclosure and low-level WC, heated towel rail, extractor fan, double glazed window to front, heated

towel rail and laminate flooring.

**Shower Room**

Fitted with three piece suite with comprising, tiled shower enclosure, pedestal wash hand basin with tiled splashback and low-level WC, skylight, laminate flooring and extractor fan.

**Store Room**

1.92m (6'4") x 1.70m (5'7")  
Walk-in store room with double doors.

**Outside**

There is driveway parking on the tarmac only at the front of the property. A side gate gives access to the enclosed rear garden which is mainly laid to lawn with patio area

and gravelled area to the sides.

EPC Rating: TBC



**T Payne & Co**  
SALES & LETTINGS



**T Payne & Co**  
SALES & LETTINGS