



Bellot Street, SE10

£380,000

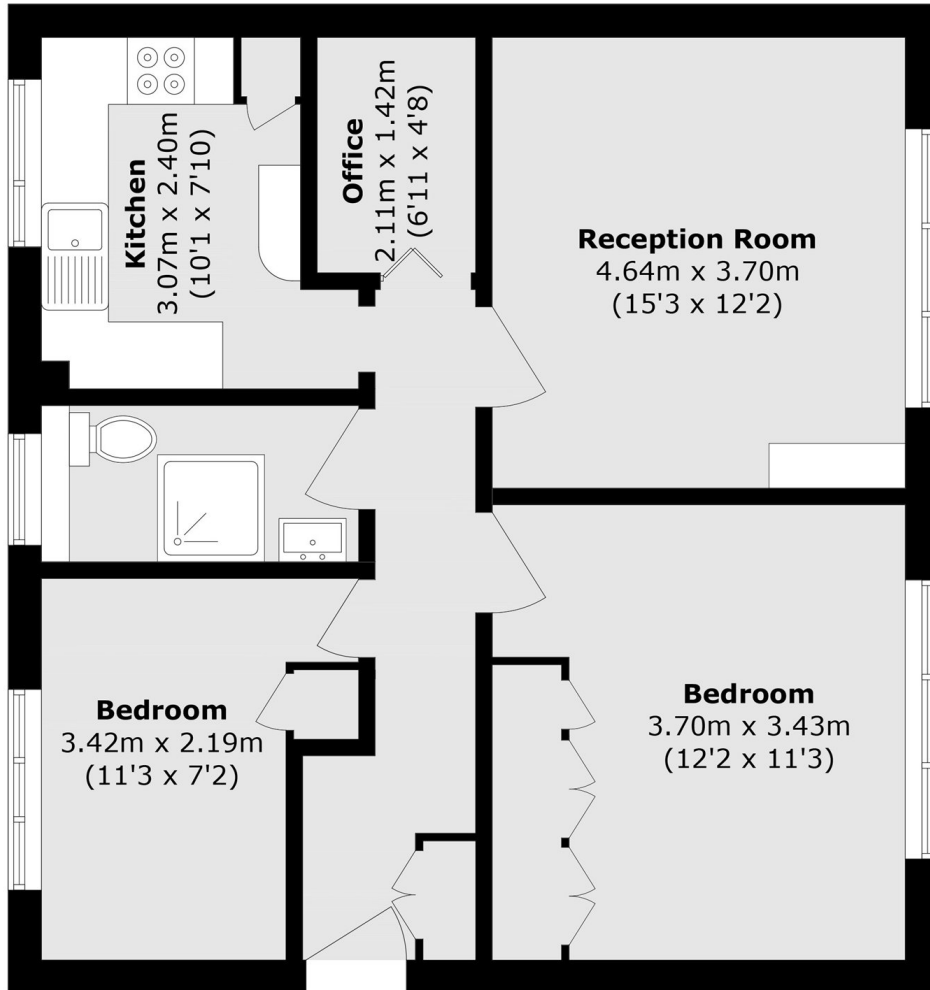
A beautifully presented two bedroom ground floor purpose built flat in sought after location that has been finished to a high standard and would make an ideal first purchase.

Bellot street is a quiet residential street located a short walk from Maze Hill Mainline Station providing direct links to London Bridge, Cannon Street and St Pancras. North Greenwich (Jubilee Line), Cutty Sark (DLR) and Greenwich Pier (Uber Boats) are also nearby. The Thames Path is very close and Greenwich Park, National Maritime Museum, Royal Observatory, Royal Naval College and the O2 are located nearby. There are an array of local shops, restaurants and cafés along Trafalgar Road and the river path for residents to enjoy while larger supermarkets are also within easy reach. A number of popular nurseries and schools for families are also in the local vicinity.

Features

O.I.E.O
Two Bedrooms
Finished To A High Standard
Ground Floor
Sought After Location
Ideal First Purchase
No Work Required

Bellot Street,
London, SE10



Total area (approx.): 64.0 sq. m (688.8 sq. ft)