



Seven Sea Gardens, London, E3

BUTLER & STAG



Guide Price £425,000 - £450,000
Discover this stylish, modern 2-bedroom, 2-bathroom apartment offering breath-taking views of Canary Wharf and a large private balcony. Located in the vibrant area of Bow, this property is just moments from the Limehouse Cut Canal, providing a scenic and tranquil setting while keeping you well-connected to the heart of London.



Leasehold

- Two Bedroom Apartment
- Contemporary High-Spec Finish
- Light-Filled, Well-Proportioned Rooms
- Two Private Balconies
- Concierge Service
- South Facing Canary Wharf Views
- Secure Gated Development
- Situated On The Third Floor

The heart of the home is a bright and spacious open-plan living and dining area, flooded with natural light thanks to full-height glazing and direct access onto a large private south-facing balcony — the perfect spot for morning coffee or evening drinks while enjoying uninterrupted views of the Canary Wharf skyline. A second private balcony adds further outdoor space, enhancing both practicality and lifestyle appeal.

The contemporary kitchen is fully fitted with integrated appliances and sleek cabinetry, seamlessly flowing into the reception space — ideal for entertaining or modern day-to-day living.

Both bedrooms are well-proportioned doubles, with the principal bedroom benefiting from a stylish en-suite shower room. A modern family bathroom and excellent built-in storage complete the internal accommodation.

Residents of Ceram Court enjoy the added benefit of a concierge service, secure entry system and well-kept communal areas, offering both convenience and peace of mind.

Positioned within easy reach of Victoria Park, Hackney Wick, Canary Wharf and Stratford, the property is perfectly located for professionals and investors alike, with excellent transport links connecting you swiftly to the City and beyond.

A superb opportunity to acquire a bright, turn-key apartment with private outdoor space and iconic skyline views in one of East London's most dynamic neighbourhoods.

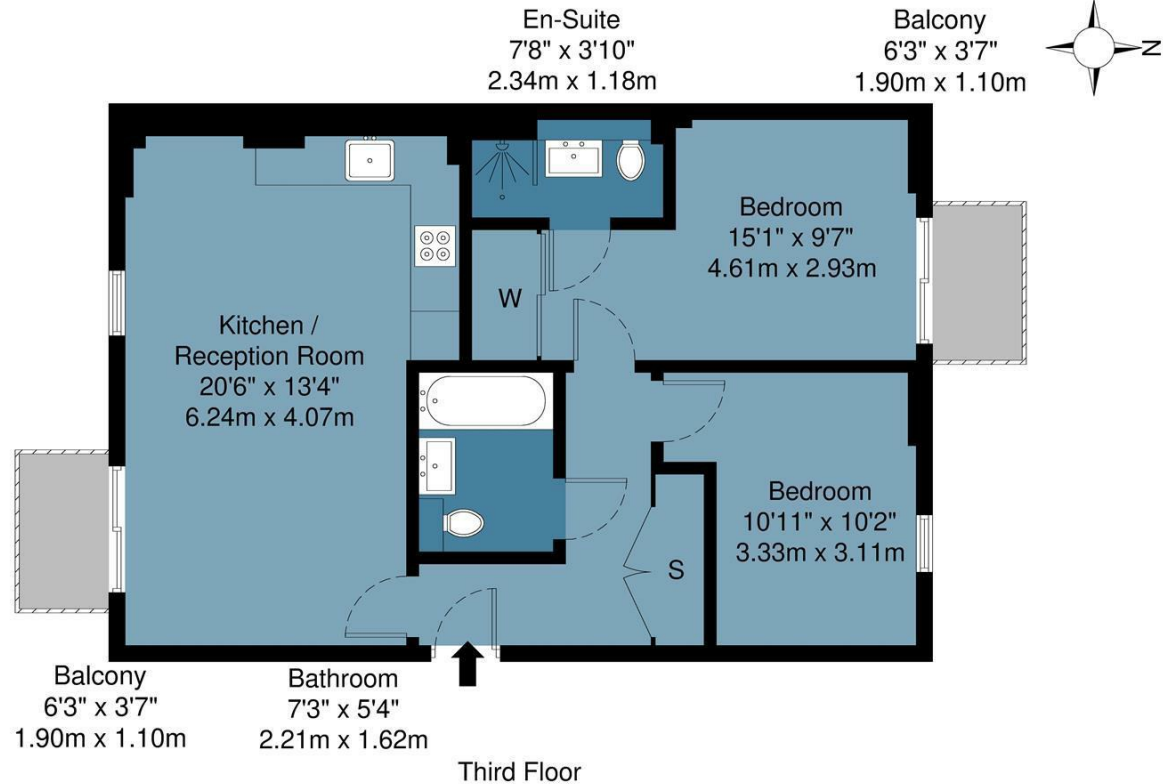




Ceram Court, E3

Approx Gross Internal Area : 61.7 sq m / 664 sq ft

BUTLER & STAG



Measurements are approximate and for illustration purposes only. While we do not doubt the accuracy and completeness, we advise you conduct a careful independent assessment of the property to determine monetary value.
© @ Maison VUE | www.maisonvue.com

BUTLER & STAG

☎ 020 8102 1236

🏠 508 Roman Road, Bow, London, E3 5LU

✉ bow@butlerandstag.com

www.butlerandstag.uk

IMPORTANT NOTICE - These particulars have been prepared in good faith and they are not intended to constitute part of an offer or contract. We have not performed a structural survey on this property and the services, appliances and specific fittings have not been tested. All photographs, measurements, floor plans and distances referred to are given as a guide and should not be relied upon.