



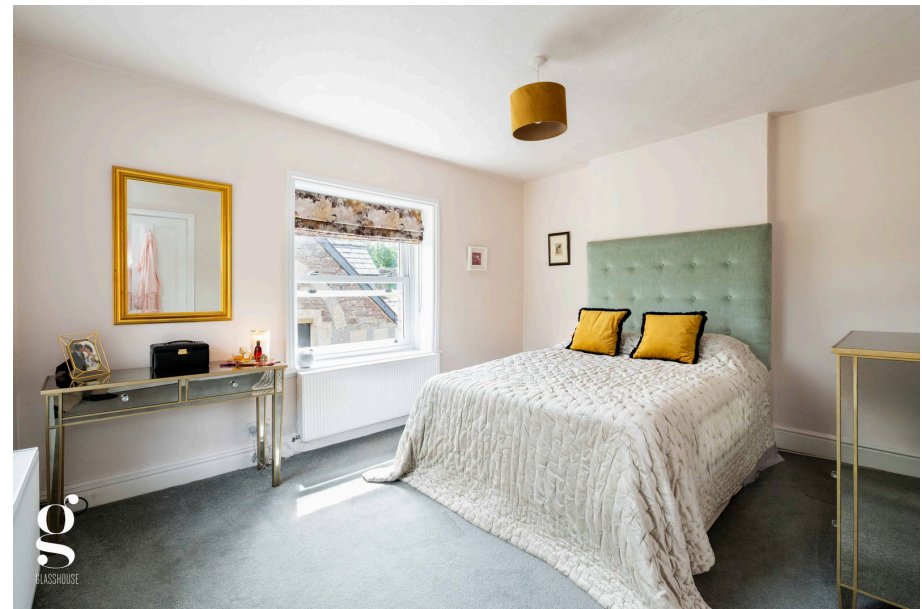
Longtown, Herefordshire

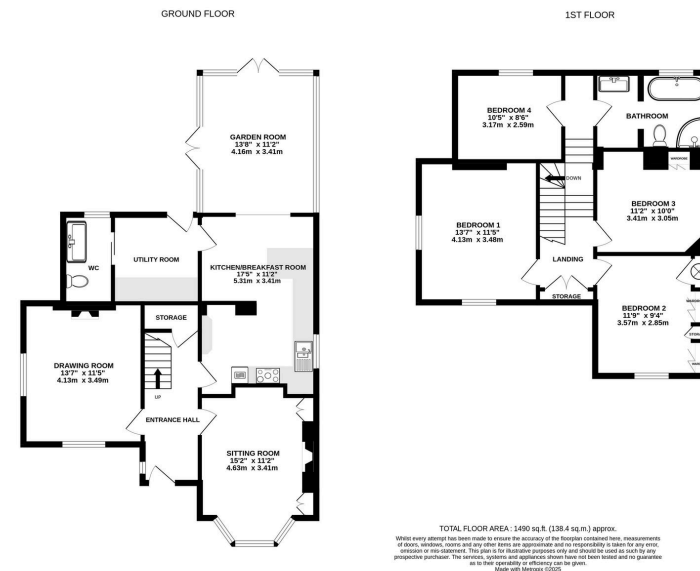
Guide Price £550,000

4 1 3



- No Onward Chain
- Built in 1894 – Former Schoolmaster’s House
- Two Elegant Reception Rooms, Engineered Oak Floor
- Vaulted Garden Room with Guardian Roof
- Superb Black Mountains Walking Countryside
- 4 Bed Detached Victorian House
- Foot of Longtown Castle (c. 1100)
- Schmidt Kitchen with Corian Worktops
- Landscaped Garden with Castle Views & Patio Terrace
- Utility & Downstairs WC





An Elegant Characterful 4 Bedroom Detached Victorian House, built in 1894 as the former schoolmaster's residence, set at the very foot of Longtown Castle – an English Heritage site dating back to the 12th century. All offered with No Onward Chain.

