



## Thames Street, TW16

### £345,000

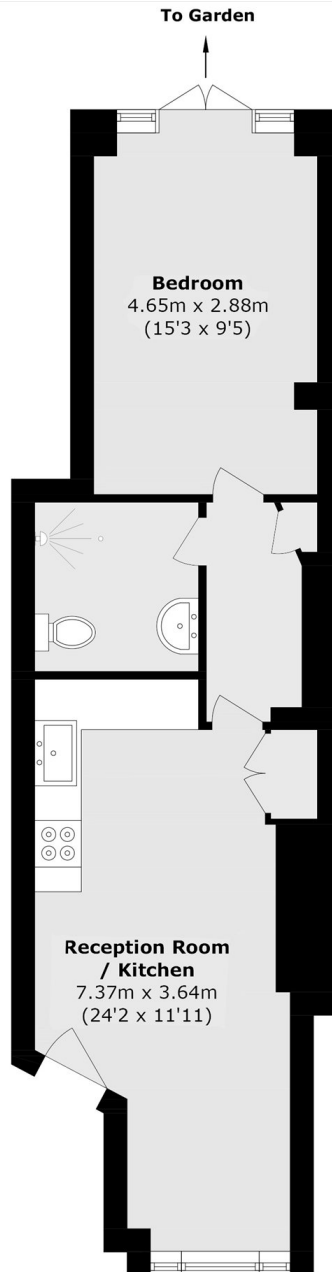
A stunning one bedroom ground floor character property with high ceilings and direct access on to the communal gardens. This unique property is immaculately presented throughout and needs to be viewed to be fully appreciated.

Located within the heart of Lower Sunbury Village, Thames Street is a fantastic location everything is on your door step including the River Thames local shops and riverside pubs. The Sunbury park and the famous 'Walled Garden' are also close by.

### Features

- Character Property
- High Ceilings
- One Bedrooms
- Ground Floor
- Communal Gardens
- Village Location

# Thames Street, Sunbury-On-Thames, TW16



Total area (approx.): 43.2 sq. m (465.0 sq. ft)