



First Floor Flat,
9/ 11 Grosvenor Gardens | | London | SW1W 0BD

£3,500 PCM



STRETTONS

Key features

- Stunning basement apartment in desirable location
- 0.2 miles from Victoria Underground Station, serviced by the District, Circle, Hammersmith & City Lines
- Fully furnished
- 2 double bedrooms
- 2 bathrooms
- EPC E
- Available with immediate effect
- Available on a 12 month assured short hold tenancy agreement
- Grand first-floor flat
- Manned reception weekdays

Description

Strettons is pleased to present this exquisite first-floor flat located in the highly sought-after borough of Westminster, SW1W. This stunning two double bedroom apartment is just 0.3 miles from Victoria Station, making it an ideal choice for those who value convenience and accessibility in the heart of London.

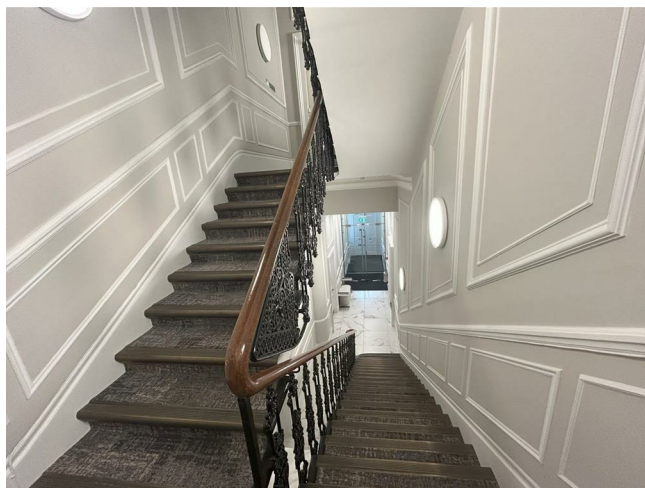
Upon entering the property, you will be greeted by a manned reception, available from 7.00 am to 7.00 pm, Monday to Friday, ensuring a secure and welcoming environment. The flat boasts two generously sized double bedrooms, both equipped with fitted wardrobes, providing ample storage space. The large living and dining area is a true highlight, featuring a magnificent centrepiece fireplace and large sash windows that flood the room with natural light, creating a warm and inviting atmosphere. The kitchen, conveniently located off the living area, is perfect for entertaining guests while maintaining a sense of separation.

The property also includes two spacious family bathrooms, each fitted with modern white three-piece suites and a separate shower. One of the bathrooms features a utility area, adding to the practicality of the flat.

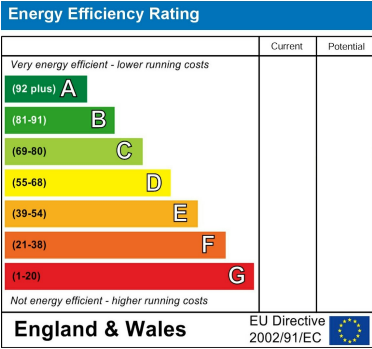
Finished to a high standard, this property is a must-see to fully appreciate its beauty and charm. It is available for immediate occupancy and comes fully furnished, making it an excellent choice for those looking to move in without delay. The EPC rating is E, and a five-week deposit of £4,038 is required.

This flat offers a perfect blend of comfort, style, and location, making it an exceptional opportunity for anyone seeking a home in one of London's most desirable areas.

Directions







Council Tax Band F EPC Rating



69 Paul Street
London
London
EC2A 4NG
02085 094406
michael.mercer@strettons.co.uk