

**OVER 60?**

Secure this property  
for up to **59% less!**



**Guide Price**

**£230,000**

**Freehold**

2x  1x  1x 

Windsor Gardens, Warden Bay, Kent, ME12

*Wards*

Helping you move forwards



## Main features

- Being sold chain free
- Located by the sea in the ever popular Warden Bay
- Off road parking for multiple cars plus a garage
- Perfect for a first time buyer
- Only a short stroll to the beach front

## Accommodation

### GROUND FLOOR

Entrance Porch  
 Lounge: 19'6 x 12'3 (5.95m x 3.74m)  
 Kitchen/Diner: 12'3 x 8'8 (3.74m x 2.64m)  
 Conservatory: 13'6 x 6'3 (4.12m x 1.91m)

### FIRST FLOOR

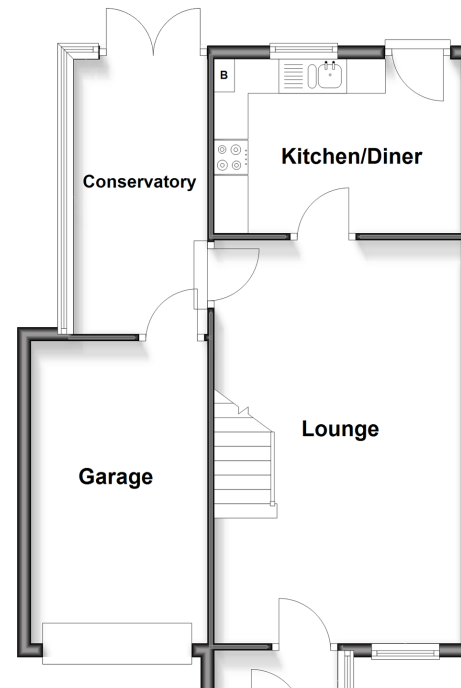
Landing  
 Bedroom 1: 11'9 x 11'5 (3.58m x 3.48m)  
 Bedroom 2: 11'9 x 8'9 (3.58m x 2.67m)  
 Bathroom: 7'8 x 5'8 (2.34m x 1.73m)

### OUTSIDE

Front Driveway  
 Front Garden  
 Garage: 19'4 x 9'1 (5.90m x 2.77m)  
 Rear Garden

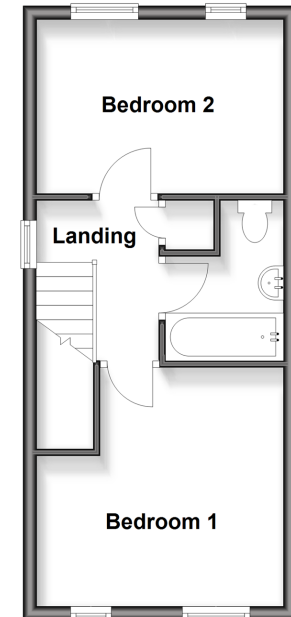
### Split Level Ground Floor

Approx. 53.4 sq. metres (575.0 sq. feet)



### First Floor

Approx. 31.3 sq. metres (336.6 sq. feet)



Call Sheerness - 01795 664651 ■ [wardsokent.co.uk](http://wardsokent.co.uk)

■ Through a Homewise Home For Life Plan people aged 60+ can secure this property for up to 59% less, by purchasing a Lifetime Lease



11635899/20260415/DS/JLS