



## Tower View Main Street, Aldington

Offers Over **£625,000**





## Tower View Main Street

Aldington, Evesham

Council Tax band: F

Tenure: Freehold

EPC Energy Efficiency Rating: B

EPC Environmental Impact Rating: C

- Spacious detached family home extending to approx. 1,901 sq. ft.
- Sought-after village location in Aldington
- Stunning open-plan kitchen/dining room
- Versatile snug/home office spaces
- Heated swimming pool in a secure enclosure
- Four bedrooms including principal bedroom with en-suite
- Ideal for modern family living and home working
- Bright and airy throughout
- Generous and flexible accommodation across two floors
- Separate lounge with feature fireplace





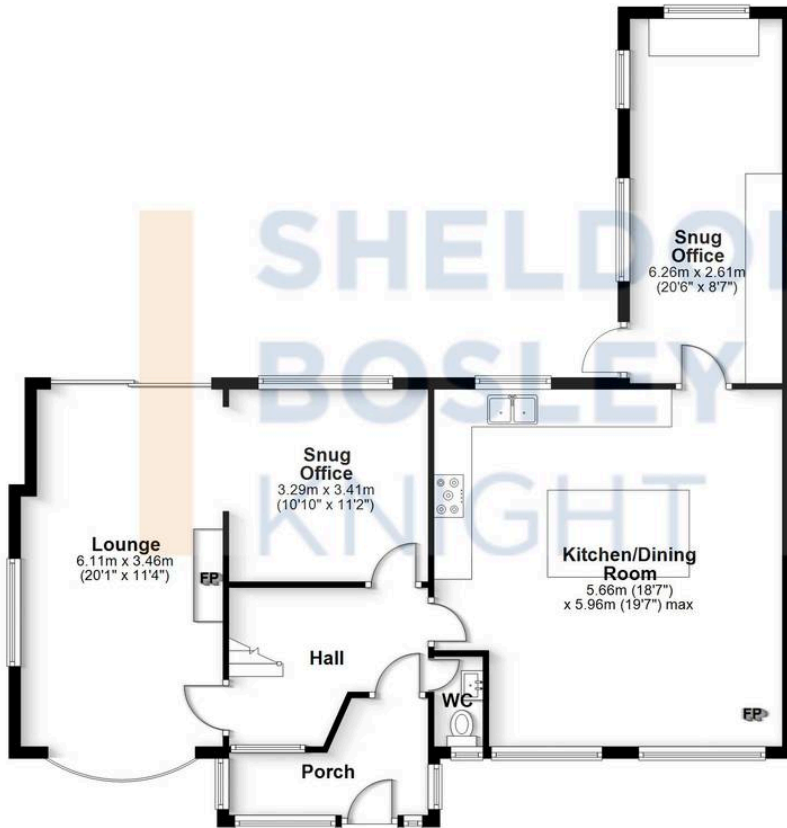




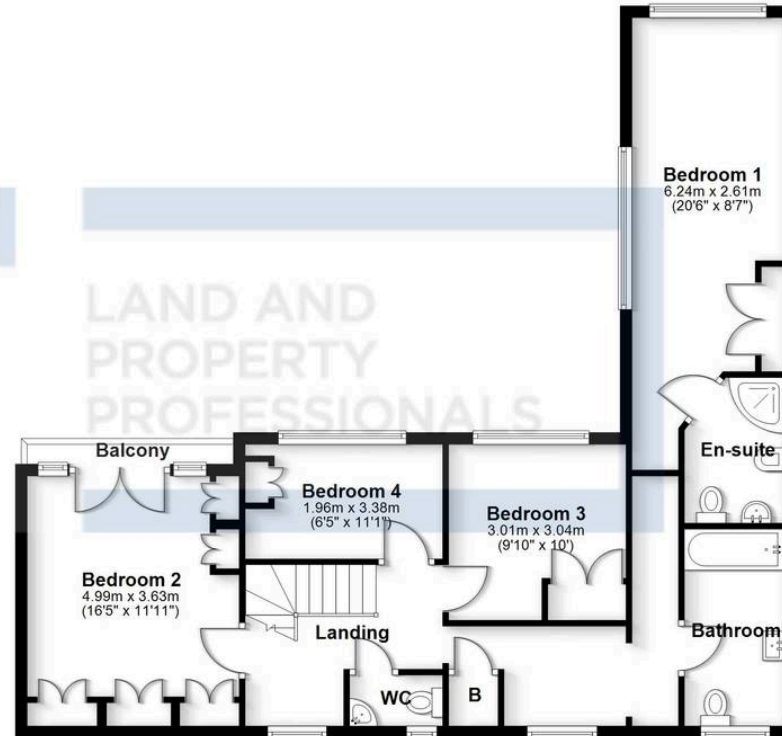




**Ground Floor**  
Approx. 97.4 sq. metres (1048.0 sq. feet)



**First Floor**  
Approx. 79.3 sq. metres (853.4 sq. feet)  
(excluding Balcony)



Total area: approx. 176.6 sq. metres (1901.4 sq. feet)

All efforts have been made to ensure the measurements are accurate on this floor plan, however these are for guidance purposes only.  
Plan produced using PlanUp.

# Sheldon Bosley Knight Evesham & Pershore

Sheldon Bosley Knight, 1 Bridge Street, Evesham - WR11 4SQ

01386444900 · eveshamsales@sheldonbosleyknight.co.uk · www.sheldonbosleyknight.co.uk/

## DISCLAIMER

All fixtures and fittings mentioned in these particulars are included in the sale, all others in the property are specifically excluded.

Photographs are reproduced for general information and it must not be inferred that any item is included for sale with the property.

These particulars are thought to be materially correct. Their accuracy is not guaranteed and they do not form part of any contract.