



MILE



Rushgrove Avenue, London £2,800 pcm %tenure%

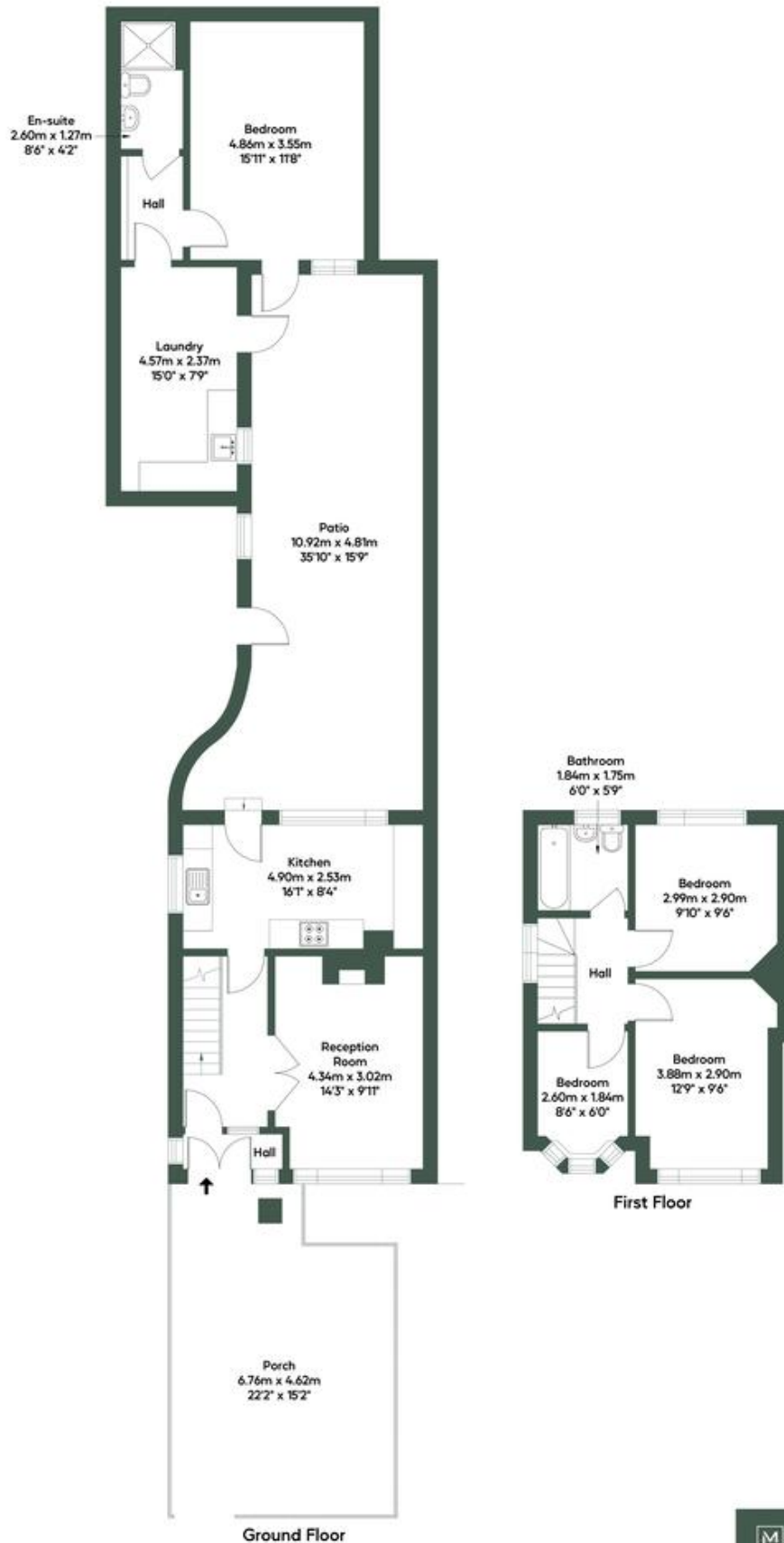
Mile Estates are delighted to present this newly refurbished four-bedroom house to rent on the sought-after Rushgrove Avenue, NW9. The property offers bright and spacious accommodation throughout and has been finished to a high standard. The main house comprises a generous reception room, a newly fitted modern kitchen with ample cupboard space, three well-proportioned bedrooms, and a stylish contemporary family bathroom. A particular feature of the property is the separate detached outbuilding, which provides an additional bedroom and offers flexible use as guest accommodation, a home office, or further living space. Further benefits include double glazing, gas central heating, good storage space, and a private rear garden ideal for outdoor entertaining. Conveniently located close to local shops, schools, parks, and excellent transport links, including Colindale and Burnt Oak Underground stations, this superb home is available immediately and is ideal for...

- Newly refurbished
- Spacious and bright reception room
- Private rear garden
- Contemporary family bathroom
- Close to transport links
- Off street parking
- Additional Bedroom in Detached Outbuilding
- Modern Family Bathroom
- Epc Rating c
- Available Immediately

RUSHGROVE AVENUE, NW9

Approximate Gross Internal Area = 102.46 sq.m / 1103 sq.ft
(Including Outbuilding)

Outbuilding = 35.34 sq.m / 380 sq.ft



This floor plan is not to scale and measurements and areas are approximate and therefore should be used for illustrative purposes only. maximum widths and

MONEY LAUNDERING REGULATIONS 2003: Intending purchasers will be asked to produce identification documentation at a later stage and we would ask for your co-operation in order that there will be no delay in agreeing the sale.

General: While we endeavour to make our sales particulars fair, accurate and reliable, they are only a general guide to the property and, accordingly, if there is any point which is of particular importance to you, please contact the office and we will be pleased to check the position for you, especially if you are contemplating travelling some distance to view the property.

Measurements: These approximate room sizes are only intended as general guidance. You must verify the dimensions carefully before ordering carpets or any built-in furniture.

Services: Please note we have not tested the services or any of the equipment or appliances in this property, accordingly we strongly advise prospective buyers to commission their own survey or service reports before finalising their offer to purchase.

