

Property ref: 978

Rose Walk, Reading, RG1 6QB

£1,200 PCM

HASLAM'S
Lettings



This newly refurbished one bedroom apartment is located within the ever-popular Holybrook development. Situated adjacent to the Oracle shopping centre and within a short walk of Reading mainline station. Reading Borough Council tax band C.

Water supply: Mains

Drainage info: Mains

Electricity supply: Mains

Broadband/Mobile Info: Connections available. For an indication of specific speeds and supply of Broadband and Mobile, we advise applicants go to the Ofcom website Broadband and Mobile Coverage Checker.

Available Now

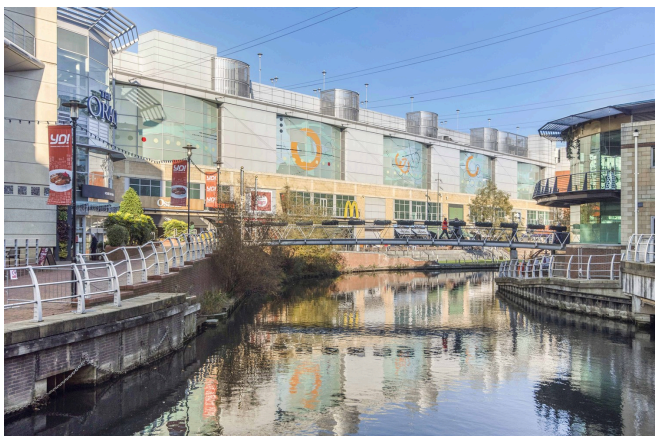
- One double bedroom with built-in wardrobes
- Newly fitted shower room
- Newly fitted kitchen with appliances
- Electric heating; EPC rating C
- Allocated parking space
- Furnished; Managed by HASLAM'S

*Fees For Assured Shorthold Tenancies: when you rent a property from us you will be required to pay a sum equivalent to one weeks' rent for a holding deposit. Upon successful application, this amount will be off set against your first months' rent. You will also be required to pay a security deposit equivalent to 5 weeks' rent which will be held and protected in line with Deposit legislation. For more information about our fees please visit: www.haslams.net
Fees for all other tenancies (Non Housing Act Tenancies / Company Lets): when you rent a property from us we will charge you a one-off fee per property. This charge is the equivalent of 15 days of the monthly rental charge (+VAT) with a minimum fee of £450 (inc.VAT) up to a maximum of £650 (inc.VAT). Other fees may apply depending on your circumstances.

0118 960 1055

lettings@haslams.net www.haslams.net

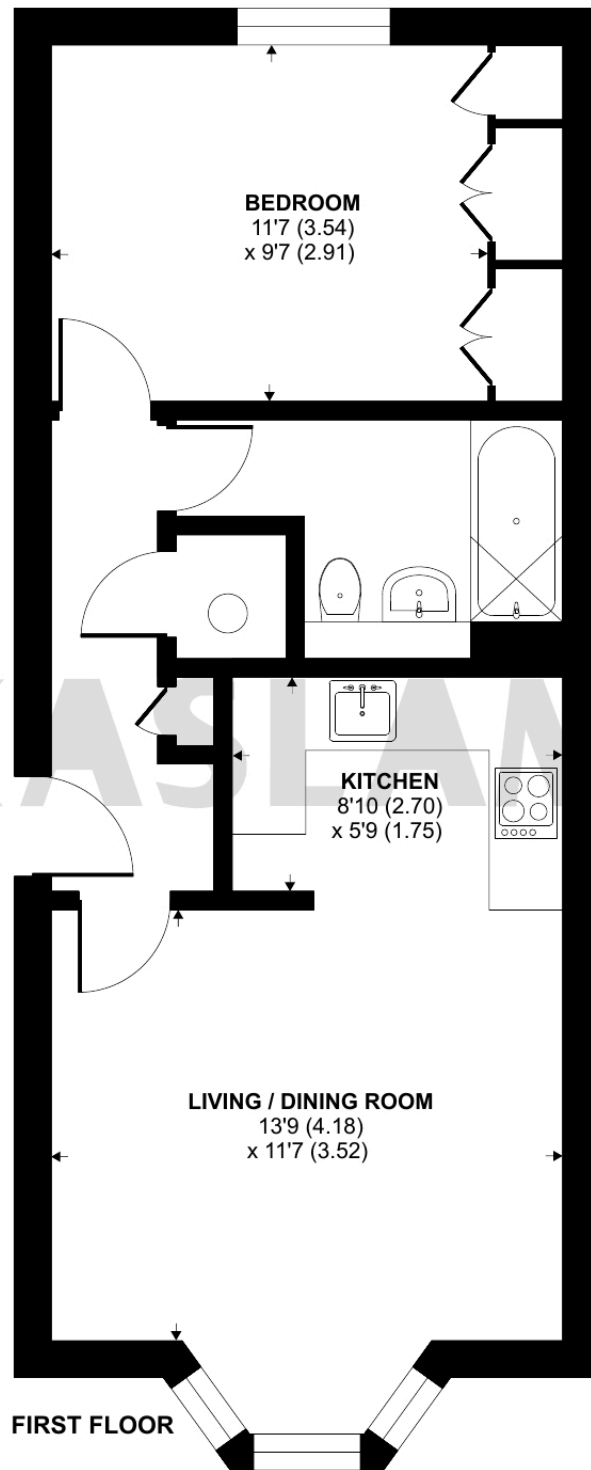
Haslams Estate Agents Ltd, 159 Friar Street, Reading, Berkshire, RG1 1HE



Rose Walk, Reading, RG1

Approximate Area = 488 sq ft / 45.3 sq m

For identification only - Not to scale



FIRST FLOOR



Floor plan produced in accordance with RICS Property Measurement 2nd Edition, Incorporating International Property Measurement Standards (IPMS2 Residential). © nchecon 2026. Produced for Haslams. REF: 1424300