

Property ref: 173192

Highgrove Street, Reading, RG1 5EN

£1,100 PCM

HASLAM'S
Lettings



A recently refurbished one bedroom first floor apartment conveniently situated on the border of the University area and within close proximity of Reading town centre, Royal Berkshire Hospital and Reading mainline train station.

Reading Borough Council tax band A.

Water supply: Mains

Drainage info: Mains

Electricity supply: Mains

Broadband/Mobile Info: Connections available. For an indication of specific speeds and supply of Broadband and Mobile, we advise applicants go to the Ofcom website Broadband and Mobile Coverage Checker.

- One double bedroom
- Modern fitted kitchen
- Bathroom with shower over bath; No parking
- Electric heating; EPC rating D
- Garden shared between two flats
- Unfurnished; Managed by HASLAM'S

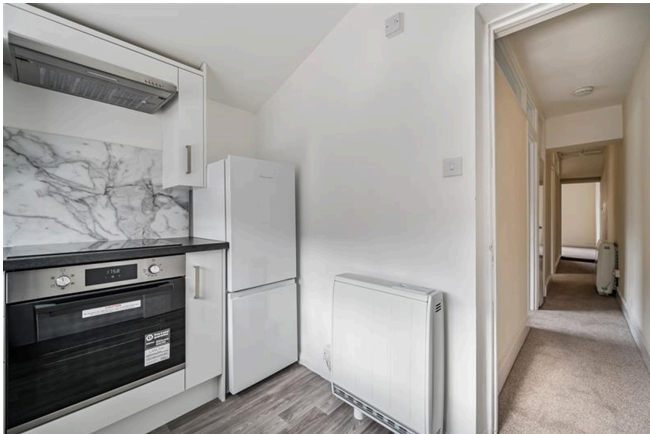
Available 30/03/2026

*Fees For Assured Shorthold Tenancies: when you rent a property from us you will be required to pay a sum equivalent to one weeks' rent for a holding deposit. Upon successful application, this amount will be off set against your first months' rent. You will also be required to pay a security deposit equivalent to 5 weeks' rent which will be held and protected in line with Deposit legislation. For more information about our fees please visit: www.haslams.net
Fees for all other tenancies (Non Housing Act Tenancies / Company Lets): when you rent a property from us we will charge you a one-off fee per property. This charge is the equivalent of 15 days of the monthly rental charge (+VAT) with a minimum fee of £450 (inc.VAT) up to a maximum of £650 (inc.VAT). Other fees may apply depending on your circumstances.

0118 960 1055

lettings@haslams.net www.haslams.net

Haslams Estate Agents Ltd, 159 Friar Street, Reading, Berkshire, RG1 1HE



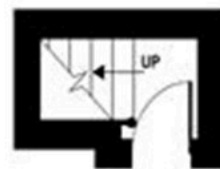
Highgrove Street, Reading, RG1

Approximate Area = 489 sq ft / 45.4 sq m

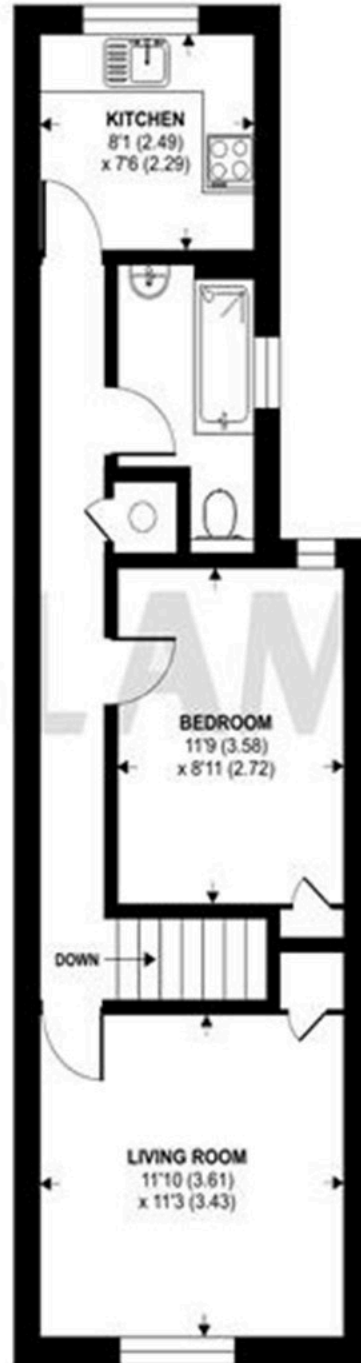
For identification only - Not to scale



HASLAMSS



GROUND FLOOR



FIRST FLOOR



Floor plan produced in accordance with RICS Property Measurement 2nd Edition, incorporating International Property Measurement Standards (IPMS2 Residential). © richcom 2025. Produced for Haslamss. REF: 1343365