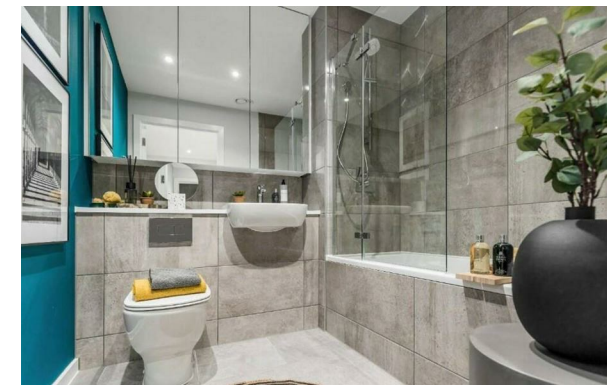
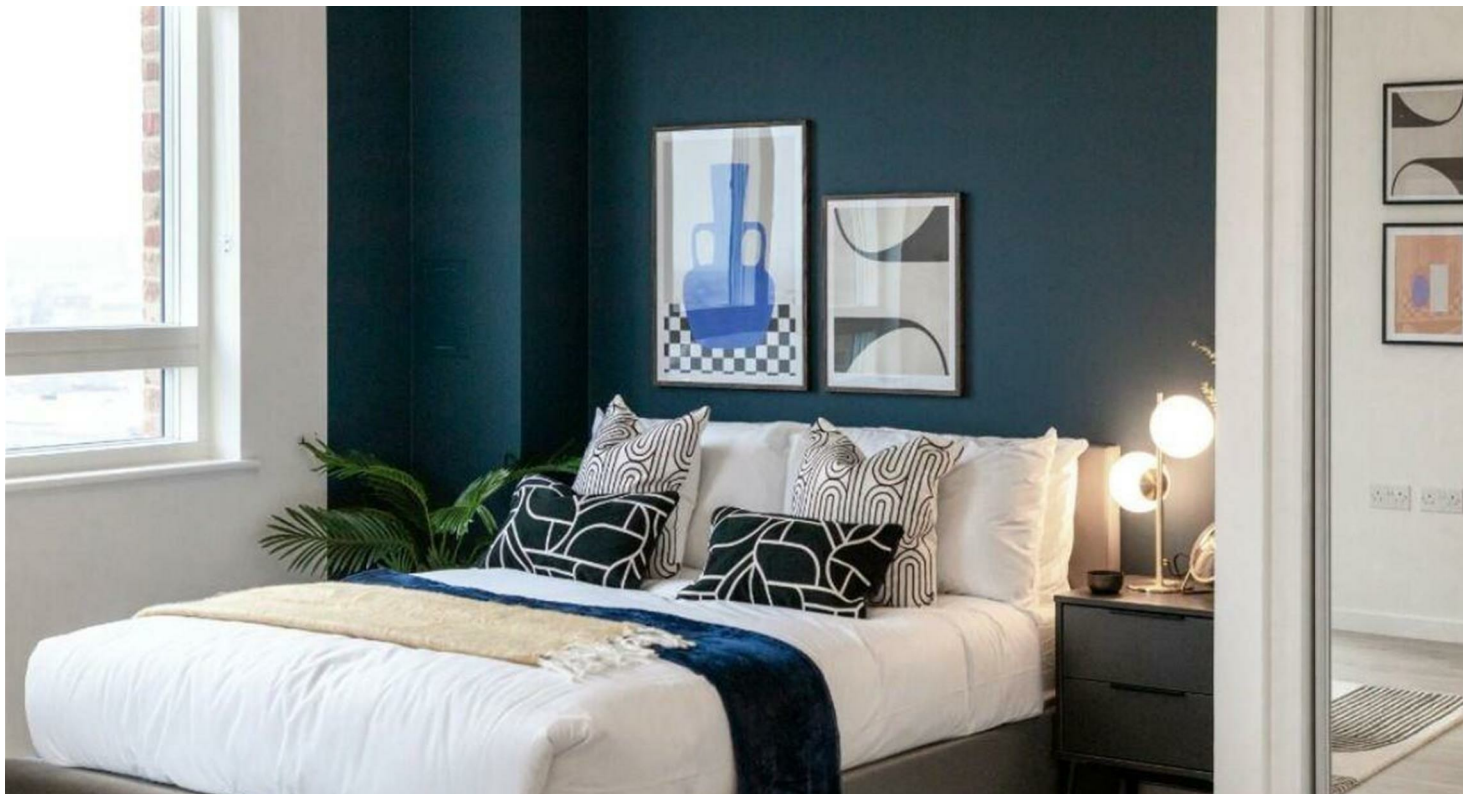




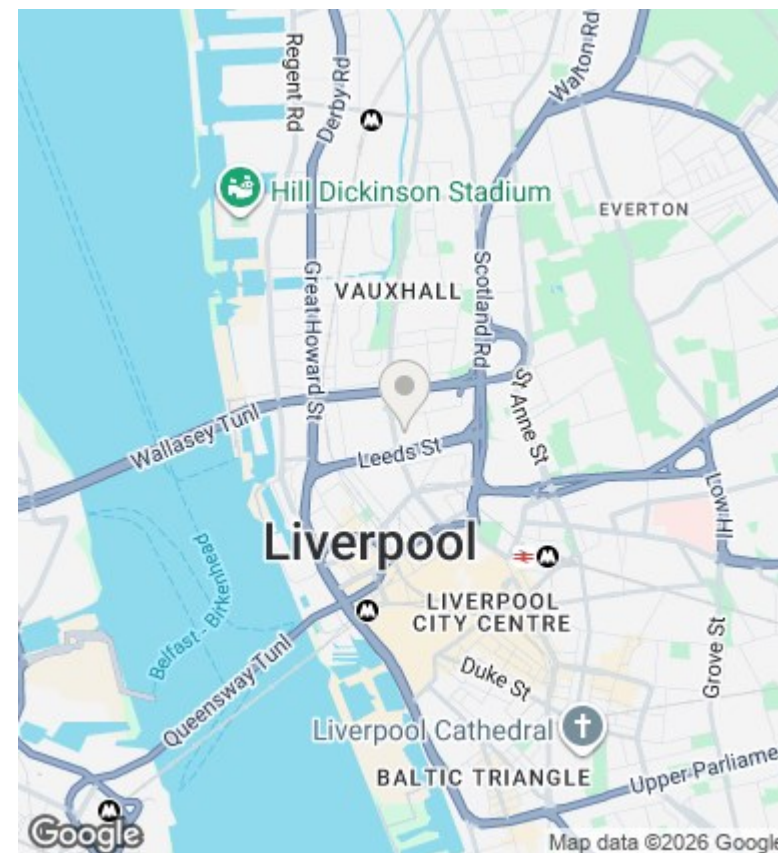
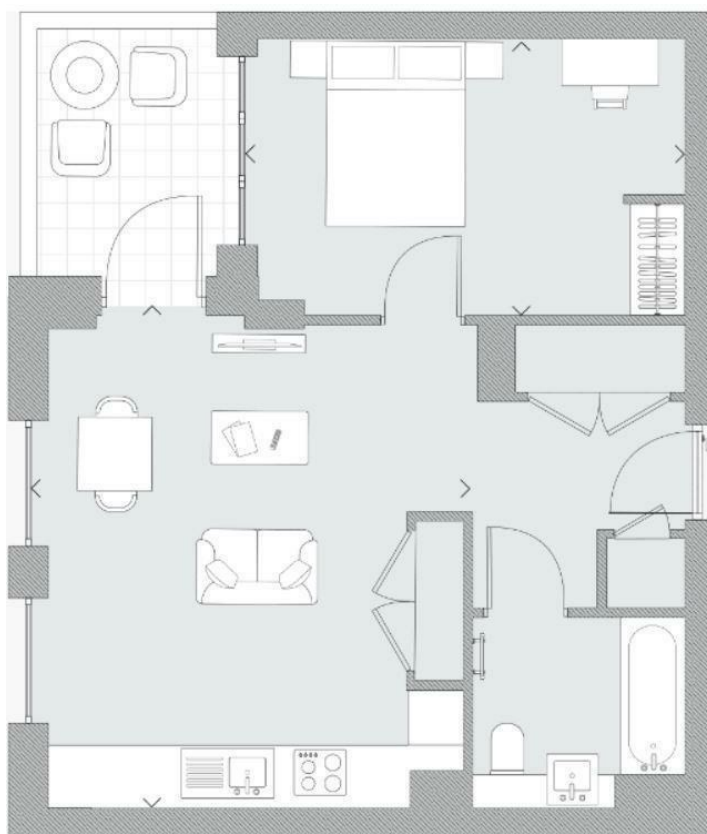
RESIDENTIAL



## 12 Naylor Street, Liverpool, L3 6DL

£210,000

- New Build
- Central Location
- Short Term Let Approved with yields up to 15%
- Furniture Pack Included
- AST Yields up to 7%
- Reputable Developer



## Directions

## Viewings

Viewings by arrangement only. Call 0113 3224 345 to make an appointment.

## Council Tax Band

## EPC Rating:

Energy Efficiency Rating		
	Current	Potential
Very energy efficient - lower running costs		
(92 plus) <b>A</b>		
(81-91) <b>B</b>		
(69-80) <b>C</b>		
(55-68) <b>D</b>		
(39-54) <b>E</b>		
(21-38) <b>F</b>		
(1-20) <b>G</b>		
Not energy efficient - higher running costs		
<b>England &amp; Wales</b>	EU Directive 2002/91/EC	