

Aldreds
Estate Agents



57 North Drive

, Great Yarmouth, NR30 4EX

Offers Over £500,000



57 North Drive

, Great Yarmouth, NR30 4EX

Aldreds are pleased to offer this delightful, individually designed detached house built to a high specification on a large plot, offering light and spacious accommodation with enviable sea views. Built in 1966 by RG Carter the property has a distinctly contemporary character with generous glazed openings and solid maple floors throughout the principal rooms. High quality joinery is a feature of the house, complemented by stylish built in wardrobes and fitted units. The secluded south/west facing rear garden provides a pleasing contrast to the striking marine outlook elsewhere. The property is offered chain free by the family that commissioned the build and represents an ideal opportunity to enjoy a well equipped living space with the potential to further extend and enhance if required. An early viewing is recommended to appreciate this rare opportunity.

Entrance Porch

10'9" x 8'7" (3.30 x 2.62)

Glazed windows and door to front, quarry tiled flooring, power point, glazed internal door to:

Reception Hall

Cloakroom

7'3" x 5'6" (2.21 x 1.68)

Window to front aspect, pedestal wash basin, low level wc, radiator, space to provide a shower if required.

Lounge

20'1" x 12'11" (6.14 x 3.95)

Superb main reception room with a triple aspect with windows to front and side aspects and French doors to rear, attractive fireplace with inset electric fire (could be used as an open fireplace with an external chimney), side display area, radiator, tv point, attractive maple flooring.

Dining Room

10'11" x 10'11" (3.34 x 3.33)

Glazed window on to the rear garden, radiator, attractive maple flooring, serving hatch to:

Kitchen

11'7" x 8'10" (3.55 x 2.70)

Fitted Frank Guille designed kitchen with vintage Kandya wall and matching base units, double drainer stainless steel sink unit, electric cooker point, part tiled walls, glazed window to rear garden, doors to:

Utility/Boiler Room

7'11" x 5'8" (2.42 x 1.75)

Shelf with space and plumbing below for a washing machine, white ceramic Butlers sink, oil fired boiler, tiled walls, glazed window to front aspect.

Rear Lobby

Reinforced glazed door to rear garden.

First Floor Galleried Landing

Superb galleried landing with attractive maple flooring, radiator, access to the loft space, large glazed window and door on to the balcony providing panoramic views across the sea front and sea beyond, doors leading off to:

Bedroom 1

20'1" x 12'11" (6.14 x 3.95)

Superb main bedroom with a range of fitted vintage Austinsuite teak cupboards and drawers, triple aspect windows providing views over the sea front and aspect on to the rear garden, two radiators, fitted carpet.





Bedroom 2

10'4" x 9'10" (3.15 x 3.0)

Glazed window to front aspect providing views over the sea front, radiator, built in wardrobe cupboard, fitted carpet.

Bedroom 3

10'11" x 10'11" (3.34 x 3.33)

Glazed window overlooking the rear garden, radiator, built in wardrobe cupboard, fitted carpet.

Bathroom

7'11" x 7'0" (2.42 x 2.15)

Coloured suite comprising panelled bath, pedestal wash basin, tiled walls, radiator, frosted glazed window to rear, deep airing cupboard housing the hot water cylinder with shelving.

Separate WC

5'1" x 2'7" (1.57 x 0.79)

Low level wc, frosted glazed window to rear aspect.

Outside

A generous plot with an east/west facing aspect. Sweeping in and out driveway, integral single garage with electric door. Established rear elevated garden with scope to extend the living space and laid with lawn and secluded planted boundaries.

Tenure

Freehold

Services

Mains water, electric and drainage.

Council Tax

Great Yarmouth Borough Council - Band 'F'

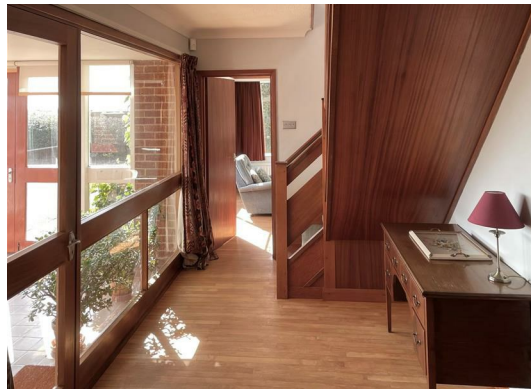
Location

Great Yarmouth is the largest resort on the East Norfolk coast with its Historic Market Place and varied selection of shops. The town has a busy port and the rivers Yare and Bure give access to the Norfolk Broads. There are Museums * Race Course * Greyhound Stadium * Schools for all ages * District Hospital approximately 5 miles south. Bus and rail services connect with Norwich.

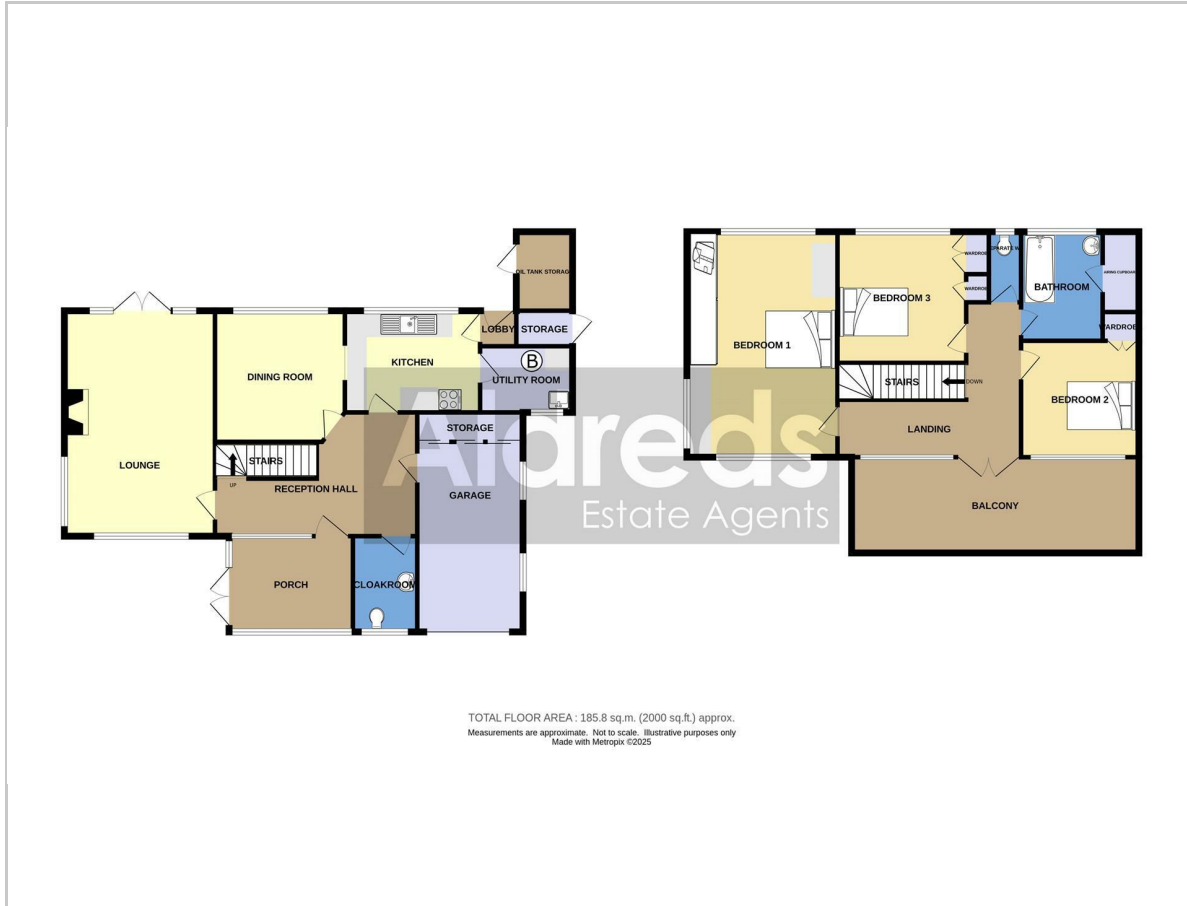
Directions

From the Yarmouth office head north along North Quay, continue over the roundabout, continue past the White Swan Public House, continue into Lawn Avenue, continue over the traffic lights into Caister Road, at the next set of traffic lights turn right into Jellicoe Road, continue over the roundabout, on reaching the sea front the property can be found on the left hand side.

Ref: Y12404/05/25/CF



Floor Plan



Area Map



Viewing

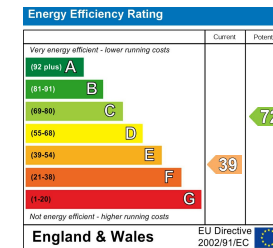
Please contact our Aldreds Great Yarmouth Office on 01493 844891 if you wish to arrange a viewing appointment for this property or require further information.

Disclaimer

These particulars are issued on an understanding that all negotiations shall be conducted through Messrs. Aldreds. Please note: Messrs. Aldreds for themselves and for the vendors or lessors of this property whose agents they are given notice that: 1. Particulars are set out as a general outline only for guidance of intending purchasers or lessees, and do not constitute nor constitute part of, an offer or contract. 2. All descriptions, dimensions, references to condition and necessary permissions for use and occupation, and other details are given without responsibility and any intending purchasers or tenants should not rely on them as statements or representations of fact but must satisfy themselves by inspection or otherwise as to the correctness of each of them. 3. No person in the employment of Messrs. Aldreds has any authority to make or give any representation or warranty whatever in relation to this property. 4. If you are proposing to visit the property and are travelling some distance please check with Aldreds on the issue of availability prior to travelling. 5. Aldreds Property Consultants and associated services may offer additional services to the prospective purchaser for which they will be entitled to receive a commission.

Aldreds are pleased to be working with Mortgage Advice Bureau. They're an award-winning mortgage broker with over 1,400 advisers across the UK, and have access to over 12,000 mortgage products from over 90 lenders. Aldreds Estate Agents Ltd receive a commission of £200 on each completed case. Your home may be repossessed if you do not keep up repayments on your mortgage. There may be a fee for mortgage advice. The actual amount you pay will depend upon your circumstances. The fee is up to 1%, but a typical fee is 0.3% of the amount borrowed. Mortgage Advice Bureau is a trading name of Mortgage Seeker Limited which is an appointed representative of Mortgage Advice Bureau Limited and Mortgage Advice Bureau (Derby) Limited which are authorised and regulated by the Financial Conduct Authority. Mortgage Seeker Limited Registered Office: Lovewell Blake, Sixty Six North Quay, Great Yarmouth, Norfolk, NR30 1HE. Registered in England Number: 03721415. 6. Potential purchasers should check with their providers that the broadband and mobile phone coverage they would require is available.

Energy Efficiency Graph



17 Hall Quay, Great Yarmouth, Norfolk, NR30 1HJ
 Tel: 01493 844891 Email: yarmouth@aldreds.co.uk <https://www.aldreds.co.uk/>

Registered in England Reg. No. 08945751 Registered Office: 17 Hall Quay, Great Yarmouth, Norfolk NR30 1HJ
 Directors: Mark Duffield B.S.c. FRICS. Dan Crawley MNAEA Paul Lambert MNAEA