



Guide Price
£280,000

Freehold

3x  1x  1x 

**Victoria Road, Chatham,
Kent, ME4**

OVER 60?

Secure this property
for up to **59% less!**

Wards
Helping you move forwards



Main features

- Immaculate Victorian terraced house
- Set over 3 floors
- Brand new kitchen, bathroom and windows
- Perfect purchase for a first-time buyer wanting to move straight in
- Ideal location for transport links, schools and local amenities

Accommodation

GROUND FLOOR

Hallway

Lounge: 13'5 x 9'10 (4.09m x 3.00m)

Dining Area: 13'1 x 11'10 (3.99m x 3.61m)

Kitchen: 10'4 x 7'10 (3.15m x 2.39m)

BASEMENT

Bedroom 2: 13'1 x 12'11 (3.99m x 3.94m)

FIRST FLOOR

Landing

Bedroom 1: 13'1 x 10'10 (3.99m x 3.30m)

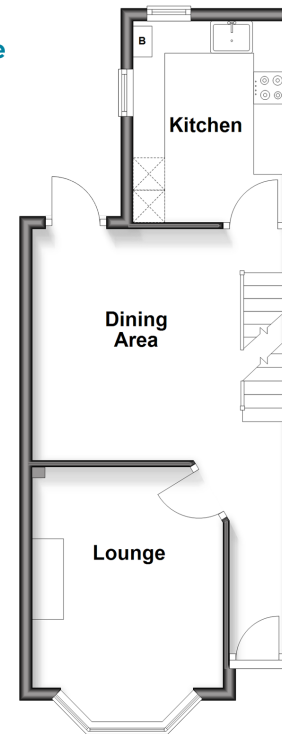
Bedroom 3: 12'1 x 8'7 (3.69m x 2.62m)

Bathroom

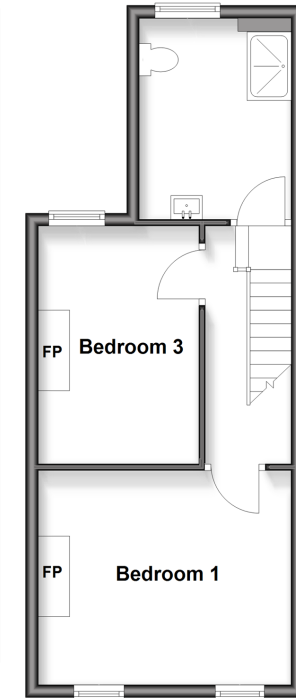
OUTSIDE

Rear Garden

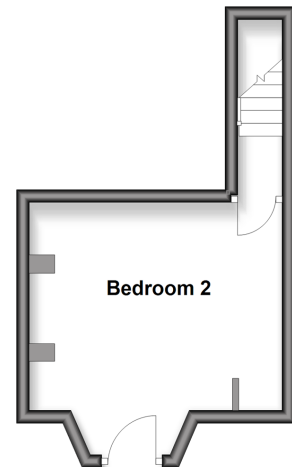
Ground Floor
Approx. 36.1 sq. metres (388.9 sq. feet)



First Floor
Approx. 36.4 sq. metres (391.9 sq. feet)



Basement
Approx. 16.1 sq. metres (173.0 sq. feet)



Call Chatham - 01634 841243 ■ wardsofkent.co.uk

- Legal advice should be taken to verify fixtures/fittings, planning, alterations and/or lease details
- Appliances & services are untested, dimensions are approximate and floor plans are not to scale
- Through a Homewise Home For Life Plan people aged 60+ can secure this property for up to 50% less, by purchasing a Lifetime Lease.



10435329/20251004/AP/RC