



27 Oaklands Manor

Le Mont De La Rosiere



27 Oaklands Manor, Le Mont De La Rosiere, St Saviour, JE2 7XL

Set within beautifully maintained grounds, Oaklands Manor is a peaceful development for over 50's. Positioned in Victoria Village, the property benefits from a bus stop right at the entrance, providing convenient access into town.

The setting is wonderful, with landscaped surroundings, a charming orangery, scenic walking paths and numerous seating areas to relax and enjoy the outlook. Residents can take advantage of a wide range of on-site amenities including a bowling green, communal lounge and dining room with kitchen facilities, games room, craft room, and library.

Located on the second floor with lift access, the apartment enjoys delightful views across neighbouring fields. The accommodation briefly comprises a bright sitting/dining room, separate kitchen, two double bedrooms, and a bathroom with a walk-in shower. The property also includes loft storage, a parking space along with ample visitor parking.



Parish: St Saviour

Qualification: Qualified

Tenure: Share Transfer

Price £399,000



- Peaceful village setting
- Views over fields
- Lift access apartment
- Excellent resident facilities
- Parking for one car
- Over 50`s community





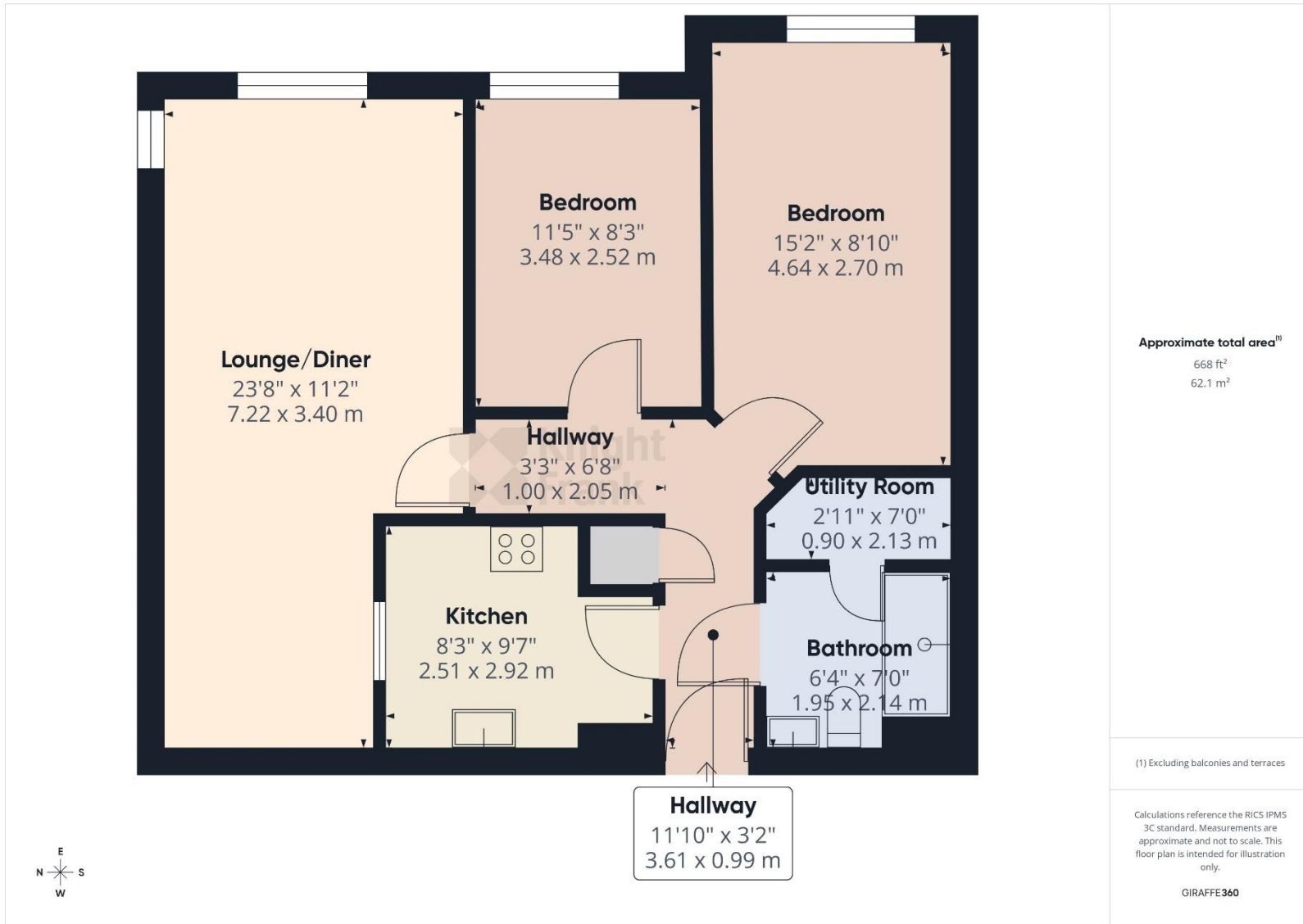


Knight
Frank









This plan is for layout guidance only. Not drawn to scale unless stated. Windows and door openings are approximate. Whilst every care is taken in the preparation of this plan, please check all dimensions, shapes and compass bearings before making any decisions reliant upon them.

Services

Mains drains

Mains water

Electric heaters

Service charge

£948.66 per quarter to include building insurance, parish rates, cleaning of communal areas, services of an on site caretaker, lift maintenance, window cleaning, garden maintenance and use of facilities.

Facilities

Snooker table, craft room, communal gardens and communal lounge/dining room.

Two guests bedrooms with en-suite facilities which can be used for £30 a night for residents' visitor.

+441534 877977

Knight Frank Jersey

37-39 Halkett Place St Helier, Jersey JE2 4WG

knightfrank.je

Your partners in property

1. Particulars: These particulars are not an offer or contract, nor part of one. You should not rely on statements given by Knight Frank Jersey in the particulars, by word of mouth or in writing ("information") as being factually accurate about the property, its condition or its value. Neither Knight Frank Jersey nor any joint agent has any authority to make any representations about the property, and accordingly any information given is entirely without responsibility on the part of Knight Frank Jersey. 2. Material Information: Please note that the material information is provided to Knight Frank Jersey by third parties and is provided here as a guide only. While Knight Frank Jersey has taken steps to verify this information, we advise you to confirm the details of any such material information prior to any offer being submitted. If we are informed of changes to this information by the seller or another third party, we will use reasonable endeavours to update this as soon as practical. 3. Photos, Videos etc: The photographs, property videos and virtual viewings etc. show only certain parts of the property as they appeared at the time they were taken. Areas, measurements and distances given are approximate only. 4. Regulations etc: Any reference to alterations to, or use of, any part of the property does not mean that any necessary planning, building regulations or other consent has been obtained. A buyer must find out by inspection or in other ways that these matters have been properly dealt with and that all information is correct. 5. Fixtures and fittings: A list of the fitted carpets, curtains, light fittings and other items fixed to the property which are included in the sale (or may be available by separate negotiation) will be provided by the Seller's Lawyer. Particulars dated 20/02/2026. All information is correct at the time of going to print.

