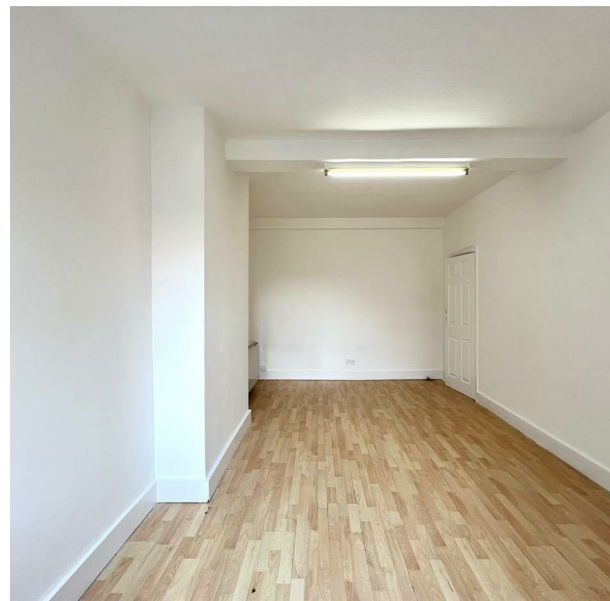


240 Chingford Mount Road, London, Greater London, E4 8JL
£1,650 Per Month



240 Chingford Mount Road, London, Greater London, E4 8JL

£1,650 Per Month

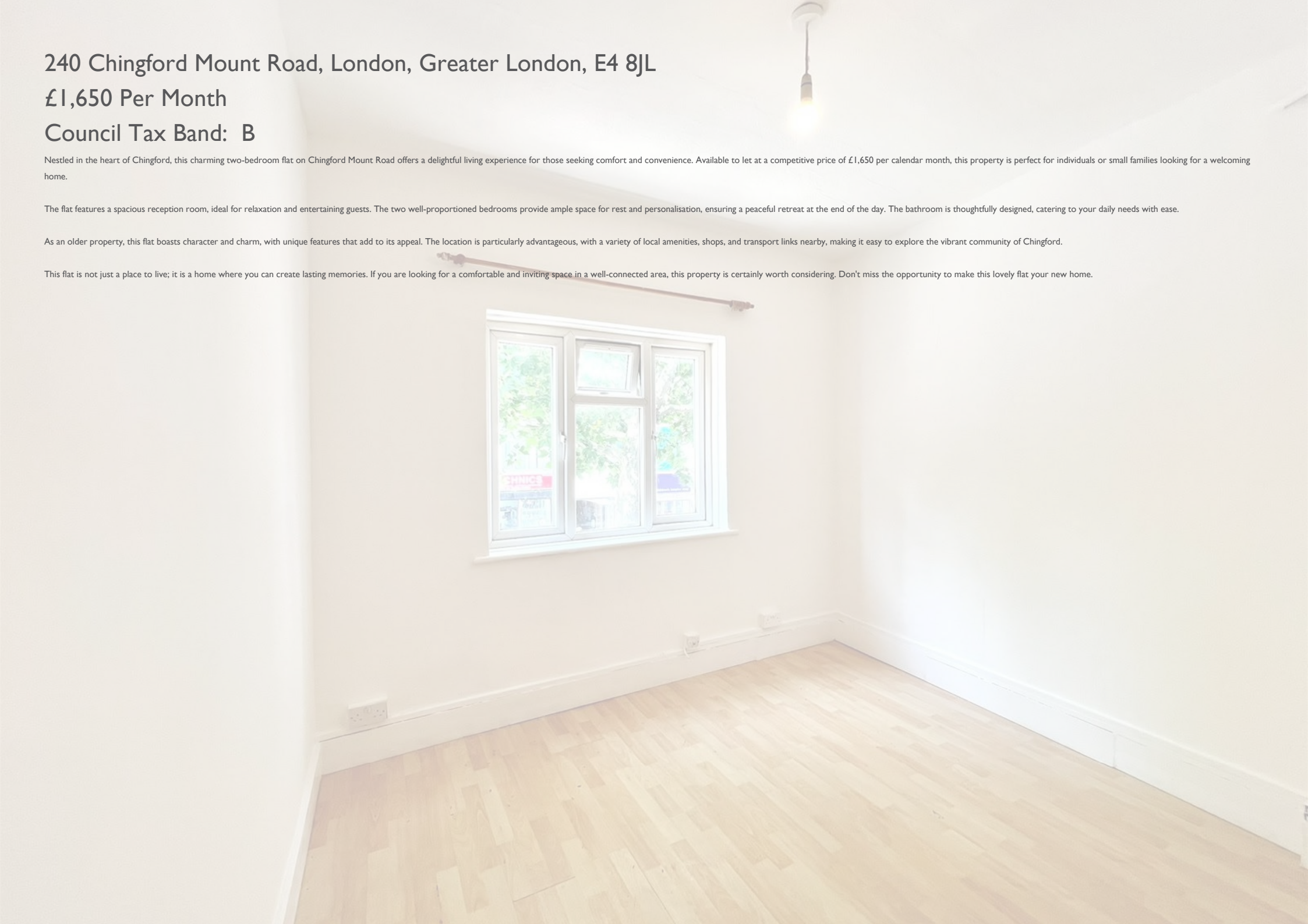
Council Tax Band: B

Nestled in the heart of Chingford, this charming two-bedroom flat on Chingford Mount Road offers a delightful living experience for those seeking comfort and convenience. Available to let at a competitive price of £1,650 per calendar month, this property is perfect for individuals or small families looking for a welcoming home.

The flat features a spacious reception room, ideal for relaxation and entertaining guests. The two well-proportioned bedrooms provide ample space for rest and personalisation, ensuring a peaceful retreat at the end of the day. The bathroom is thoughtfully designed, catering to your daily needs with ease.

As an older property, this flat boasts character and charm, with unique features that add to its appeal. The location is particularly advantageous, with a variety of local amenities, shops, and transport links nearby, making it easy to explore the vibrant community of Chingford.

This flat is not just a place to live; it is a home where you can create lasting memories. If you are looking for a comfortable and inviting space in a well-connected area, this property is certainly worth considering. Don't miss the opportunity to make this lovely flat your new home.







337 Forest Road
 London
 E17 5JR
 02085277007
 enquiries@completion.co.uk
 completion.co.uk

