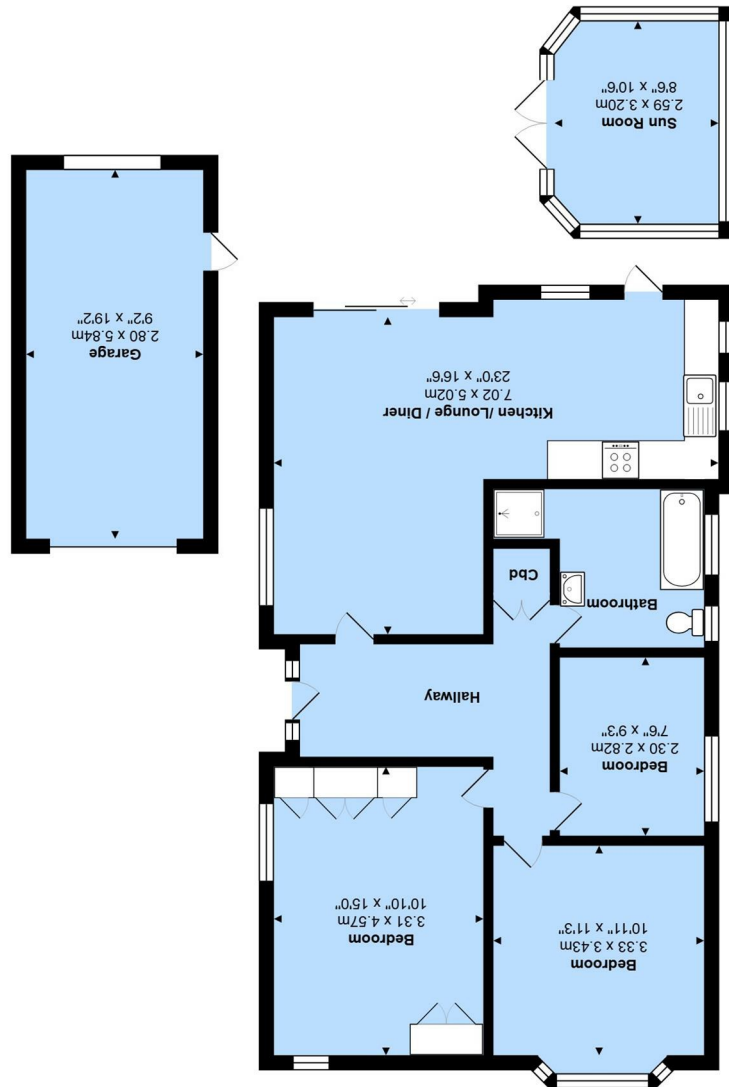




Total Area: 88.7 m<sup>2</sup> ... 954 ft<sup>2</sup> (excluding garage)  
All measurements are approximate and for display purposes only.



4 Woodland Way, Highcliffe on Sea, BH23 4LQ

£575,000

**Mitchells**  
1963 — TODAY

A delightful, older style bungalow of nearly 1000 sq ft, situated in a lovely quiet crescent, close to Highcliffe Golf course and within walking distance of Friars Cliff Beach. Presented in excellent condition with a crisp contemporary interior, a lovely open plan living space and a mature, west facing garden to the rear.

Offered for sale with no forward chain, this charming home is ready to move into straight away and offers bright and airy accommodation with potential to extend (stpp). The property features smart fittings with a stylish kitchen, wood flooring and two re-fitted bathrooms.

- Immaculate detached bungalow with neutral decor
- Three bedrooms, two with fitted wardrobes
- Two re-fitted bath/shower rooms with quality sanitary ware and tiling
- Superb open plan kitchen/living space with views and access to the garden
- Gas fired heating and UPVC double glazing
- Off road parking, garage and beautifully stocked rear garden with all day sunshine
- Detached garden room
- Walking distance of the beach, footpath over the golf course and on the bus route

EPC Rating Band: D

Council Tax Band: D

Freehold

Successful buyers will be required to complete online identity checks provided by Lifetime Legal. The cost of these checks is £48 inc. VAT per purchase which is paid in advance, directly to Lifetime Legal. This check verifies your identity in line with our obligations as stipulated by our regulatory body, HMRC

