

# GILMORE ESTATES

Property Sales & Lettings



## St. Agnes Terrace , Ryton, NE40 4NX

Situated in St. Agnes Terrace, Ryton, this delightful end terrace house offers a perfect blend of character and modern living. Built in 1912, the property spans an impressive 1,076 square feet and is spread over three floors, providing ample space for comfortable living.

Upon entering, you are greeted by two inviting reception rooms, ideal for both relaxation and entertaining guests. The layout is thoughtfully designed, allowing for a seamless flow throughout the home. The property boasts two well-proportioned bedrooms, providing a peaceful retreat for rest and relaxation.

One of the standout features of this home is the conservatory, which invites natural light and offers a lovely space to enjoy the surrounding views. The gas central heating and double glazing ensure that the property remains warm and energy-efficient throughout the year.

**£169,950**

# St. Agnes Terrace

, Ryton, NE40 4NX



- TWO BEDROOMS
- END TERRACE
- GAS CENTRAL HEATING
- DOUBLE GLAZED WINDOWS
- ENCLOSED GARDEN & DECKED AREA
- GARAGE PARKING

## KITCHEN

12'11" x 5'5" (3.95 x 1.66)

## INNER HALLWAY

3'4" x 11'6" (1.04 x 3.53)

## LOUNGE

18'4" x 13'5" (5.60 x 4.11)

## DINING ROOM

7'4" x 9'2" (2.24 x 2.80)

## CONSERVATORY

12'8"x 9'10" (3.87x 3.02)

## FIRST FLOOR LANDING

5'10" x 12'5" (1.80 x 3.80)

## BEDROOM ONE

11'6" x 9'0" (3.53 x 2.75 )

## BATHROOM

12'0" x 7'3" (3.66 x 2.21)

## SECOND FLOOR

### BEDROOM TWO

13'11" x 11'7" (4.25 x 3.54)

### SINGLE GARAGE

20'4" x 12'6" (6.20 x 3.83)

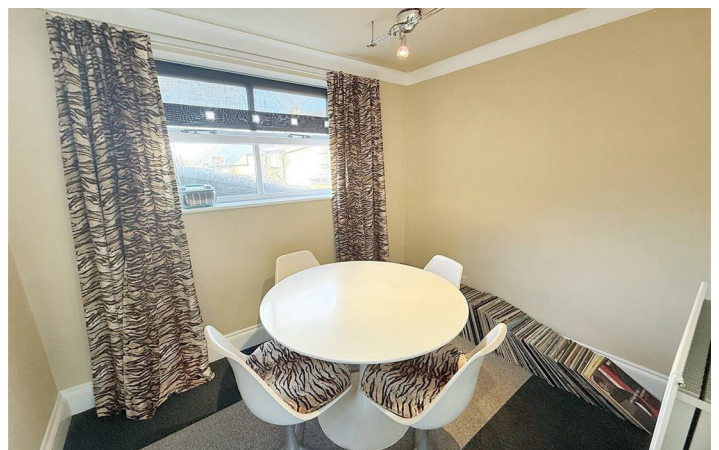
### W.C

2'10" x 5'2" (0.87 x 1.58)

### EXTERNALLY



[Directions](#)





# Floor Plan

These particulars, whilst believed to be accurate are set out as a general outline only for guidance and do not constitute any part of an offer or contract. Intending purchasers should not rely on them as statements of representation of fact, but must satisfy themselves by inspection or otherwise as to their accuracy. No person in this firm's employment has the authority to make or give any representation or warranty in respect of the property.

