



2C Woodthorne Grange, Woodthorne Road, Tettenhall, WOLVERHAMPTON, West Midlands, WV6 8TP

BERRIMAN
EATON

2C Woodthorne Grange, Woodthorne Road, Tettenhall, WOLVERHAMPTON, West Midlands, WV6 8TP

Set in this lovely development, this ground floor two bedroom duplex apartment offers deceptively spacious living accommodation and briefly comprises: reception hall, kitchen / living room, downstairs guest cloak room, stairs and landing leading to two double bedrooms with fitted wardrobes, bedroom / study, main bathroom with shower. The property is set off the road with a private driveway and allocated parking space and communal gardens. Ideal location for access to the City of Wolverhampton, Telford and the motorway network. Available early July. A payment of one weeks rent is to be paid upon acceptance of applying for the property and a security deposit of £1269 is payable upon completion. (EPC: C) (Council Tax Band C). All material information is readily available from the Agent or via the listing for this property on Rightmove or OnTheMarket.

Tettenhall Office

01902 747744

tettenhall@berrimaneaton.co.uk

Lettings Office

01902 749974

lettings@berrimaneaton.co.uk

Bridgnorth Office

01746 766499

bridgnorth@berrimaneaton.co.uk

Wombourne Office

01902 326366

wombourne@berrimaneaton.co.uk

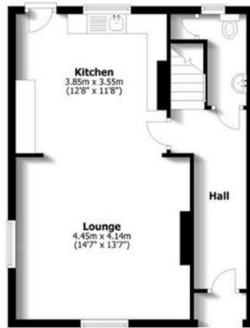
Per Month
£1,100 Per Month

EPC: G

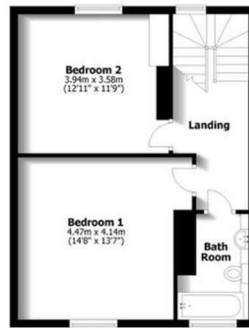
www.berrimaneaton.co.uk

IMPORTANT NOTICE: Every care has been taken with the preparation of these Particulars but they are for general guidance only and complete accuracy cannot be guaranteed. Areas, measurements and distances are approximate and the text, photographs and plans are for guidance only. If there is any point which is of particular importance please contact us to discuss the matter and seek professional verification prior to exchange of contracts.

2C WOODTHORNE GRANGE



Ground Floor



First Floor

