



Dean Road  
NW2

---

FOR SALE  
SHARE OF FREEHOLD

---

£1,050,000

---

For Sale exclusively via  
Camerons Stiff & Co.

An exquisite three-bedroom duplex apartment comprised within an imposing Victorian red-brick house in the heart of Willesden Green. This listing represents a rare and unique opportunity to acquire a beautifully presented apartment in a vibrant and interconnected location.

---







Upon entering, it becomes immediately apparent that the current owners have undertaken a meticulous and stringent interior design process. We understand that they collaborated with a number of exciting suppliers / contractors, including Mel Massey Studio and Balau Kitchens. This apartment has been thoroughly considered throughout, and the result is superb.

The living accommodation is comprised over the First & Second Floors. The First Floor offers a sizeable reception room at the front, featuring large bay windows and a distinctly moody interior design scheme. The kitchen is



situated in the midriff and is gorgeous, boasting exceptional fixtures. At the rear, you'll find a large bathroom with a standalone tub. The third bedroom (currently set up as a work from home space) is at the back.

The Second Floor is impressive, featuring both the principal bedroom and the second bedroom, in addition to a shower room. The defining feature of the apartment is a 21ft roof terrace, which is abundant in natural light throughout the day owing to sunny southerly aspect.

Early viewing is thoroughly recommended.





- Three-bedroom duplex apartment in a Victorian red-brick house
- Set across the first and second floors
- Stylish reception room with large bay windows
- Spacious bathroom with standalone bathtub
- Two bedrooms and shower room on the top floor
- Third bedroom ideal as a home office
- Stunning 21ft south-facing roof terrace
- Located on tree-lined Dean Road in Willesden Green
- Short walk to GAIL's Bakery and Jubilee line transport links
- COUNCIL:Brent(D)







# DEAN ROAD

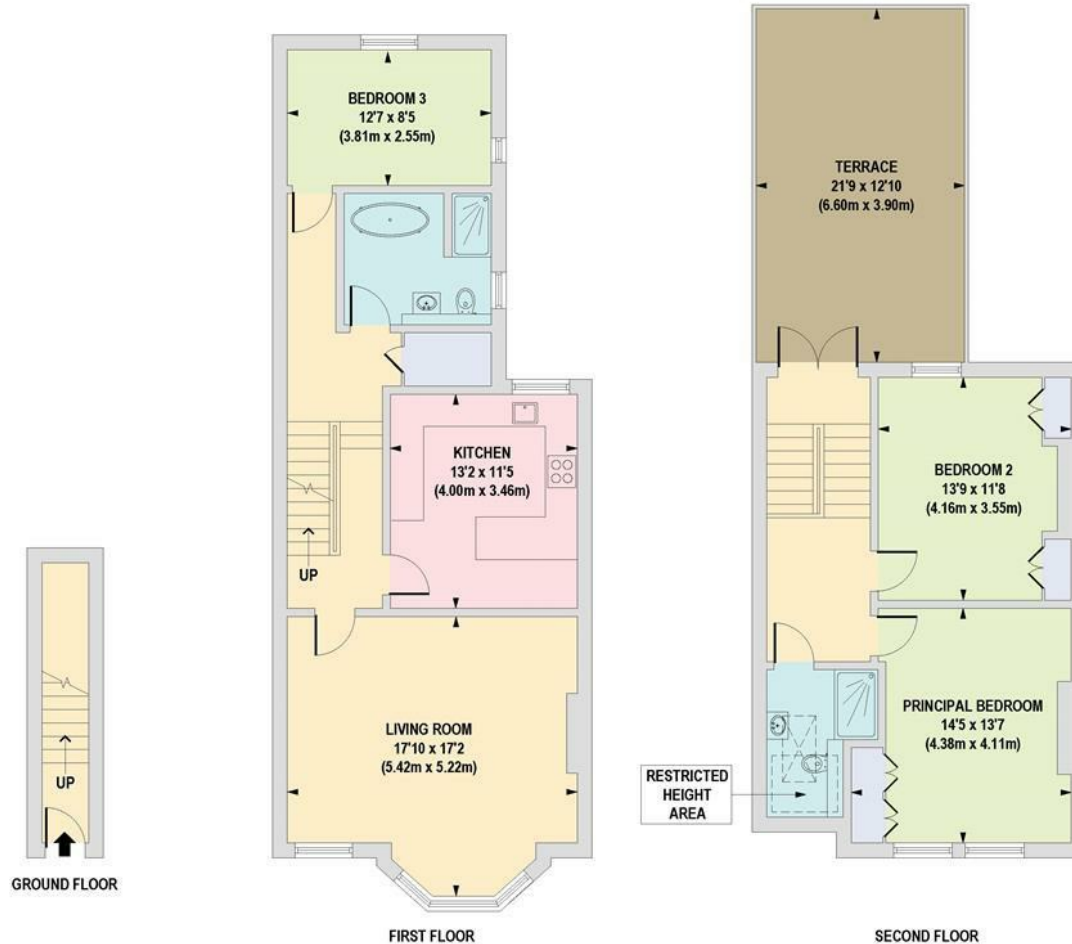
London - NW 2



Approximate Gross Internal Floor Area

1349 sq. ft / 125.31 sq. m (Including Restricted Height Area)

1329 sq. ft / 123.50 sq. m (Excluding Restricted Height Area)



Approx 1349.00 sq ft

EPC: C

Brent (D)

Ref: 19740547

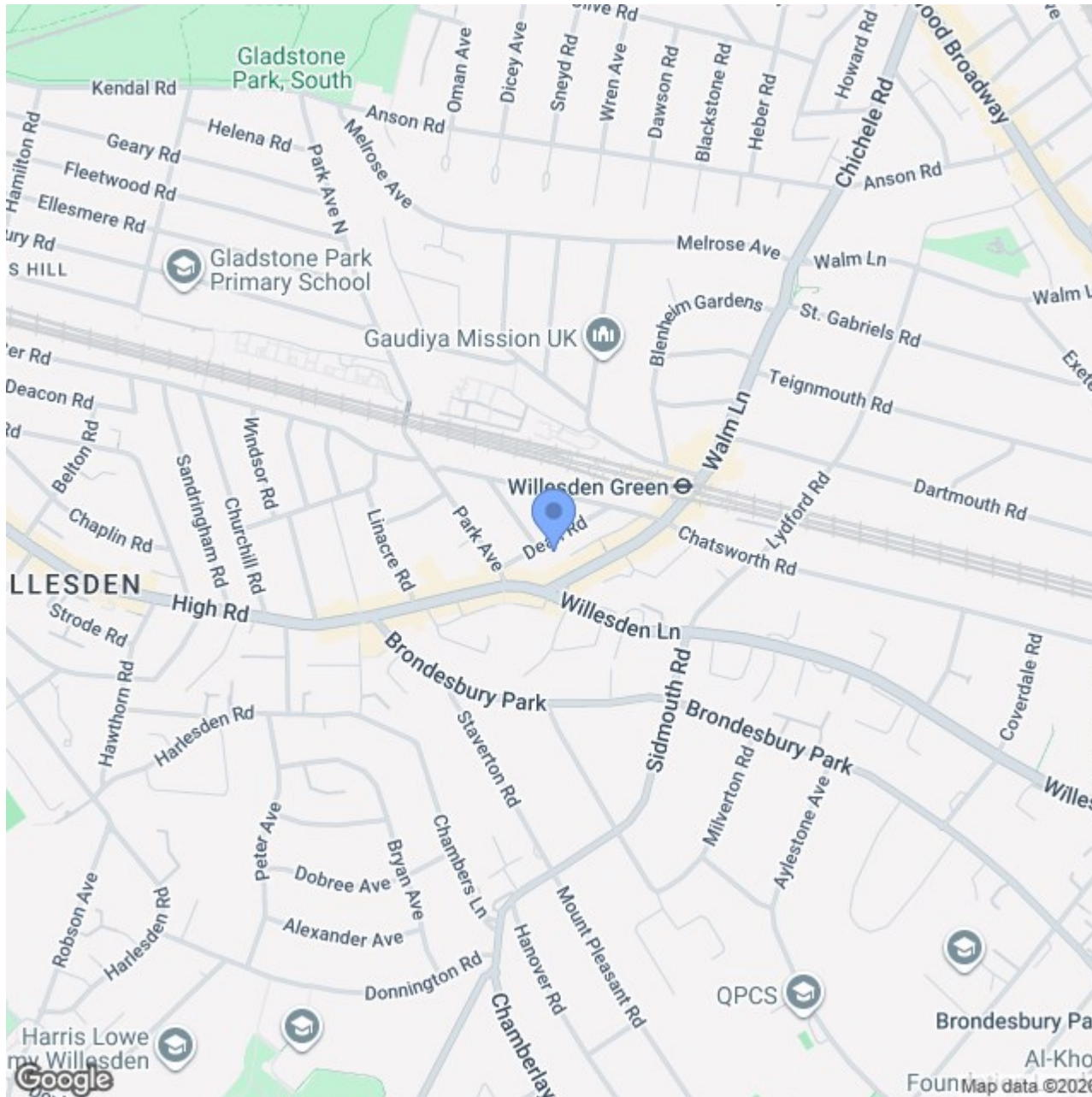
Floorplan is for illustrative purposes only and is not to scale. Every attempt has been made to ensure the accuracy of the floor plan shown, however all measurements, fixtures, fittings and data shown are an approximate interpretation for illustrative purposes only. Liability for errors, omissions or mis-statement through negligence or otherwise is hereby excluded.

# Location

---

Dean Road is a tree-lined residential road in Willesden Green. The apartment is a 3-minute walk from a Gail's coffee shop (on Walm Lane). It's also ideally located to get to Queen's Park, Kensal Rise and West Hampstead / Hampstead. Local transport links include Willesden Green (Jubilee).

---



020 7328 2828 \* 020 8459 1133 – Sales

020 8450 9377 – Lettings

enquiries@cameronsstiff.co.uk

cameronsstiff.co.uk

**CAMERONS STIFF & Co.**  
EST. 1982



These particulars are a guide, not an offer contract. Property descriptions, photographs and floor plans are not taken as statements or representations of fact. Although every effort has been taken to ensure measurements, provided are as accurate as possible, they are to be assumed approximate and not to scale. Prospective purchasers must verify the accuracy of the information provided here through private means. Camerons Stiff & Co. does not give any representations or warranties, nor does Camerons Stiff & Co. represent the vendor legally. Camerons Stiff & Co. assume no liability, for any costs, losses or expenses incurred by the vendor or a prospective purchaser relating to any transaction regarding this property.

©Camerons Stiff & Co. 2025 All rights reserved.

