



4 Tiddington Court Knights Lane, Tiddington

Offers Over **£200,000**



4 Tiddington Court Knights Lane

Tiddington, Stratford-Upon-Avon

Council Tax band: C

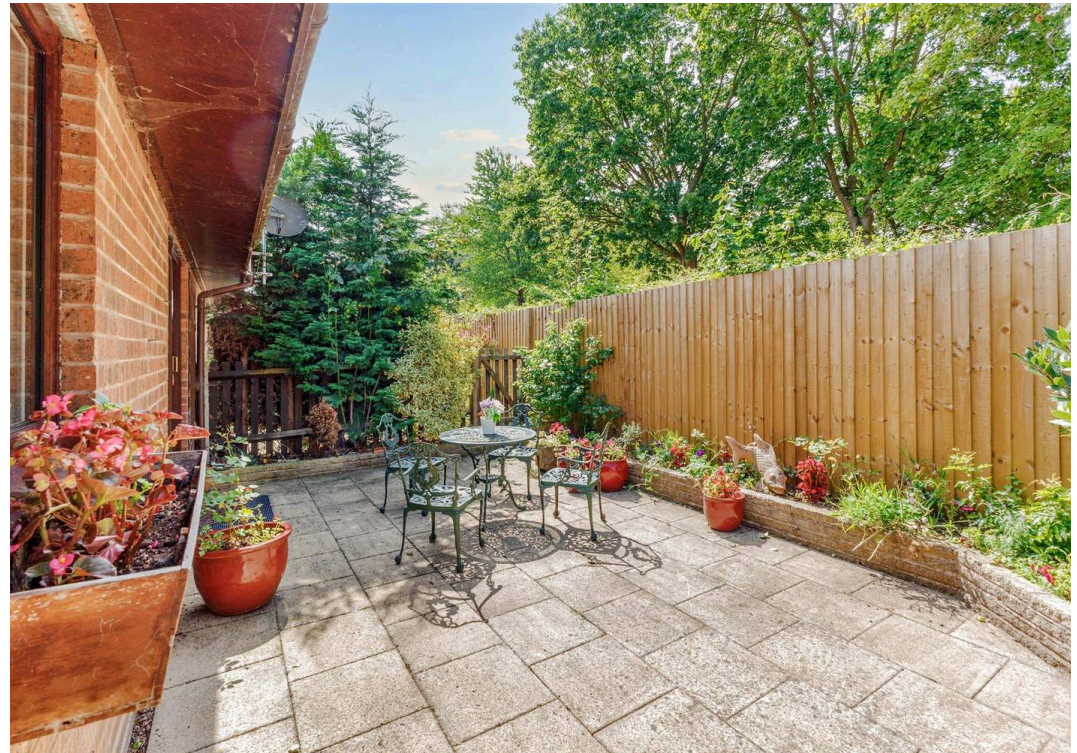
Tenure: Leasehold

EPC Energy Efficiency Rating: C

EPC Environmental Impact Rating: C

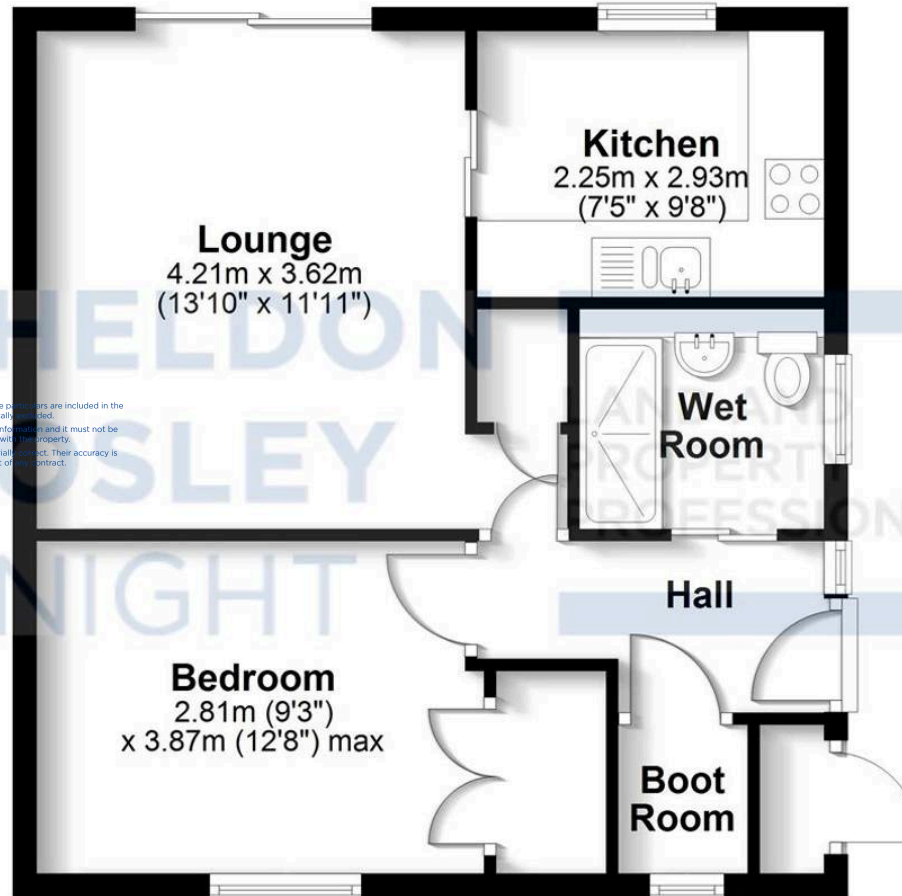
- Semi Detached Bungalow
- Minimum Age Of 55
- Extended 990 Year Lease
- 24 Hour On Site Staff
- Private Front & Rear Gardens
- Lounge Diner
- Fitted Kitchen
- Double Bedroom With Built In Wardrobe
- Refitted Shower Wet Room
- No Onward Chain





Ground Floor

Approx. 47.5 sq. metres (511.3 sq. feet)



DISCLAIMER

All fixtures and fittings mentioned in these particulars are included in the sale, all others in the property are specifically excluded. Photographs are reproduced for general information and it must not be inferred that any item is included for sale with the property. These particulars are thought to be materially correct. Their accuracy is not guaranteed and they do not form part of any contract.

Total area: approx. 47.5 sq. metres (511.3 sq. feet)

All efforts have been made to ensure the measurements are accurate on this floor plan, however these are for guidance purposes only.
Plan produced using PlanUp.

Sheldon Bosley Knight Stratford-Upon-Avon

Sheldon Bosley Knight, 35-36 Rother Street - CV37 6LP

01789387887 · stratfordsales@sheldonbosleyknight.co.uk · www.sheldonbosleyknight.co.uk/

DISCLAIMER

All fixtures and fittings mentioned in these particulars are included in the sale, all others in the property are specifically excluded. Photographs are reproduced for general information and it must not be inferred that any item is included for sale with the property. These particulars are thought to be materially correct. Their accuracy is not guaranteed and they do not form part of any contract.