



Ellesmere Road, TW1

£5,250 Per calendar month

Situated on a quiet residential street in the highly sought-after area of St Margarets, this attractive property on Ellesmere Road offers a perfect blend of character, comfort and convenience.

Ellesmere Road is a popular residential road, excellently located for outstanding primary and secondary schools. The River Thames is a short walk away, why not take a stroll over Richmond Bridge for a spot of shopping. A choice of transport links into London.

Features

- Short Let
- Four Bedrooms
- Two Bathrooms
- Detached House
- Large Driveway
- Bright And Spacious
- Unfurnished



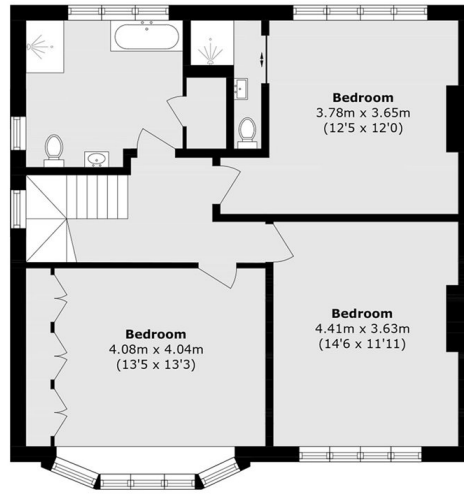
Ellesmere Road, TW1

The home features well-proportioned living spaces, including a bright and welcoming reception room. A spacious kitchen with direct access to a private large rear garden.

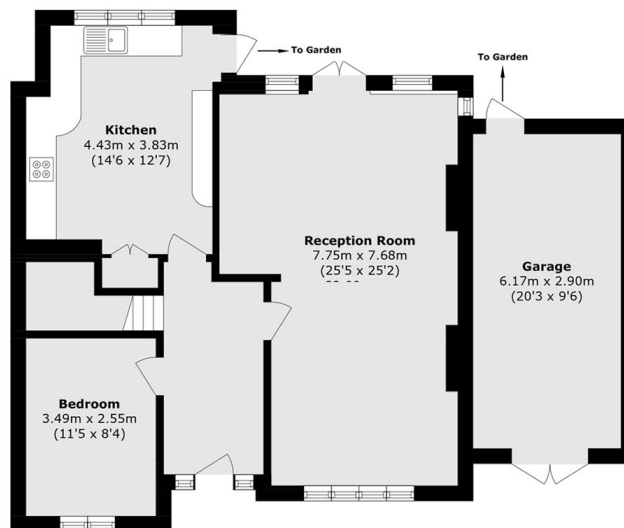
Upstairs, the property has four generously sized bedrooms filled with natural light, along with a modern family bathroom. The layout is both practical and versatile, making it well-suited to families, professionals, or those looking to upsize.



Ellesmere Road, Twickenham, TW1



First Floor



Ground Floor

Total (approx.): 143.4 sq. m (1543.5 sq. ft)
Outbuilding area (approx.): 17.8 sq. m (191.5 sq. ft)