



Hollies Close

SW16

£6,500 per month
(£1,500 per week)

This stunning 2,800+ sqft modernised house has been renovated and extended to a high standard and is part of the award-winning Hollies Close gated development. Boasting entry via a set of remote-operated electric gates and security cameras.

CHESTERTONS



Hollies Close

SW16

- Immaculate condition throughout
- 6 Bedrooms
- 3 Bathrooms and W/C
- Close to Dulwich College
- Underfloor heating throughout ground floor
- Private gated road with security cameras
- Private garden with jacuzzi
- Hidden cinema room

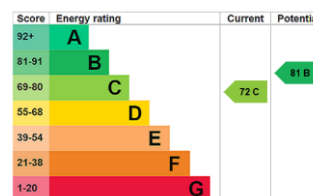


Situated in an award-winning, secluded development of just 8 detached houses in the sought-after Norwood Grove Conservation Area, the house is surrounded by the hilltop parkland of Norwood Grove. This unique house is situated behind remotely operated electric gates and features multiple security cameras to ensure a safe, secure environment.

The house was fully modernised and remodelled by Architect Laura Jane Clark (Your Home Made Perfect) to a very high standard when it was extended both up into the attic and back into the garden.

The large living room/dining room/kitchen features high-end kitchen

Minimum Term: 4 months
Deposit Required: £9,000.00
Local Authority: London Borough Of Croydon
Council Tax Band: G
EPC Rating: C
Furnished



Chestertons Wandsworth Common Lettings

[chestertons.co.uk](https://www.chestertons.co.uk)

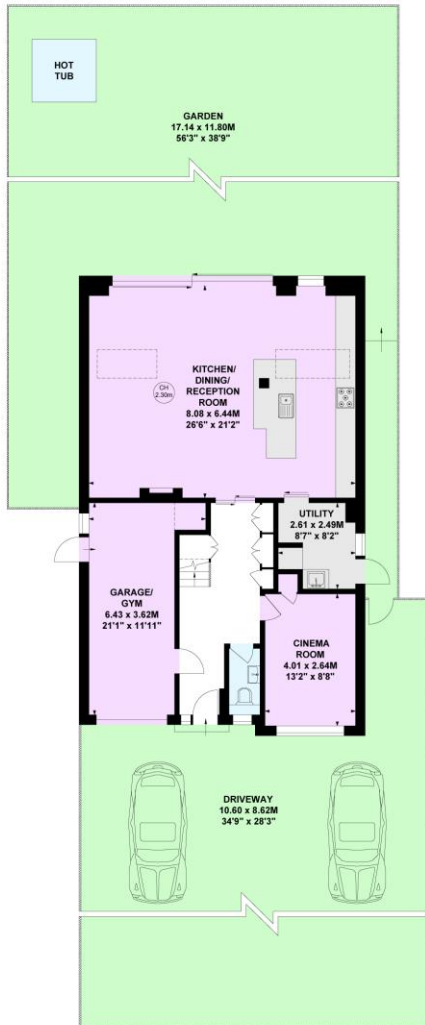
Additional tenant charges apply (fees apply to non-AST tenancies only)
 Tenancy Agreement Fee: £300
 References per Tenant/Guarantor: £60
 Inventory check (approx. £100 – £250 inc. VAT)
[chestertons.co.uk/property-to-rent/applicable-fees](https://www.chestertons.co.uk/property-to-rent/applicable-fees)

Hollies Close, SW16

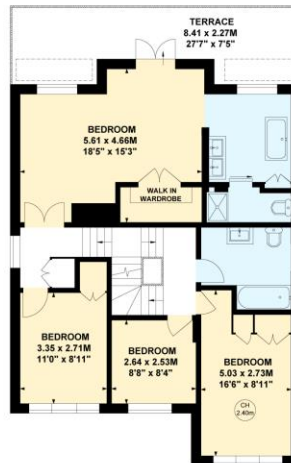
Approximate gross internal area
261.22 sq m / 2811 sq ft
(Including Eaves Storage & Garage)
Eaves Storage
20.79 sq m / 224 sq ft
Garage
17.43 sq m / 188 sq ft



Key :
 CH - Ceiling Height



Ground Floor



First Floor



Second Floor

Not to scale, for guidance only and must not be relied upon as a statement of fact.
 All measurements and areas are approximate only

