



The Beeches

£200,000

- GROUND FLOOR LUXURY APARTMENT
- 2 BEDROOMS
- PRIVATE ENTRANCE
- CONVENIENT LOCATION
- PARKING
- SPACIOUS ACCOMMODATION
- EPC Rating: B
- Council Tax: B





About the property

This exciting development of luxury apartments is perfectly positioned in the highly sought-after area of Sedbury, Chepstow, offering superb convenience with local schools and shops on hand, as well as being within easy reach of the town centre itself and with excellent road access via the M48 motorway bringing Cardiff and Bristol within commuting distance.

Apartment 3 is a beautifully presented ground floor apartment, boasting a bright and neutral interior throughout. Designed with modern living in mind, the property offers spacious and versatile accommodation, ideal for both relaxing and entertaining.

The welcoming hallway leads into an impressive open plan living area, complemented by a stylish fully fitted modern kitchen complete with integrated appliances. Further accommodation includes two generous double bedrooms and a contemporary shower room finished to a high standard.

This superb property represents an ideal opportunity for first time buyers, downsizers and investors alike! Early viewing is highly recommended to fully appreciate everything this fantastic apartment has to offer!





Accommodation

Open Plan Kitchen Living Room

28' 3" x 14' 6" (8.61m x 4.42m)

Bedroom 1

15' x 9' 8" (4.57m x 2.95m)

Bedroom 2

11' 9" x 9' 7" (3.58m x 2.92m)

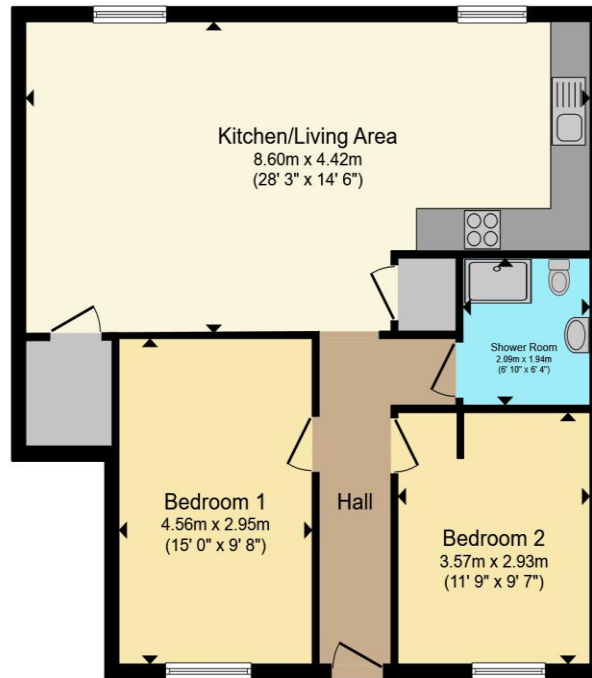
Shower Room

6' 10" x 6' 4" (2.08m x 1.93m)

Outside

Parking for 2 vehicles. small garden to front of property suitable for seating area

Floorplan



Total floor area 74.0 m² (796 sq.ft.) approx

This floor plan is for illustrative purposes only. It is not drawn to scale. Any measurements, floor areas (including any total floor area), openings and orientation are approximate. No details are guaranteed, they cannot be relied upon for any purpose and they do not form part of any agreement. No liability is taken for any error, omission or misstatement. A party must rely upon its own inspection(s). Powered by www.propertybox.io

Important Information

Note while we endeavour to make our sales details accurate and reliable, if there is any point which is of particular interest to you, please contact the office and we will be pleased to confirm the position for you. We have not personally tested any apparatus, equipment, fixtures, fittings or services and cannot verify they are in working order or fit for their purposes. Nothing in these particulars is intended to indicate that carpets or curtains, furnishings or fittings, electrical goods (whether wired or not). Gas fires or light fittings or any other fixtures not expressly included form part of the property offered for sale. This computer generated Floorplan, if applicable, is intended as a general guide to the layout and design of the property. It is not to scale and should not be relied upon for dimensions. Tenure: We cannot confirm the tenure of the property as we have not had access to the legal documents. The buyer is advised to obtain verification from their solicitor or surveyor.