



Hampton Court Way

Thames Ditton, KT7 0LS

£850,000

A 4 bedroom detached property on a broad plot with a beautiful mature garden extending over 100ft. In need of extensive modernisation throughout - offering huge scope to reconfigure, renovate and make your own, subject to planning consents. Further benefits off street parking and a garage. Situated close to local amenities, transport links, and the green open spaces of the surrounding area. Offered to the market with no onward chain.

- Detached
- Scope to modernise and extend (STPP)
- Close to local amenities & schools
- Mature garden extending over 100ft
- Off street parking & garage
- Chain free

Floor Plan

Hampton Court Way

Approximate Gross Internal Area = 137.4 sq m / 1479 sq ft
 Garage = 10.8 sq m / 116 sq ft
 Total = 148.2 sq m / 1595 sq ft

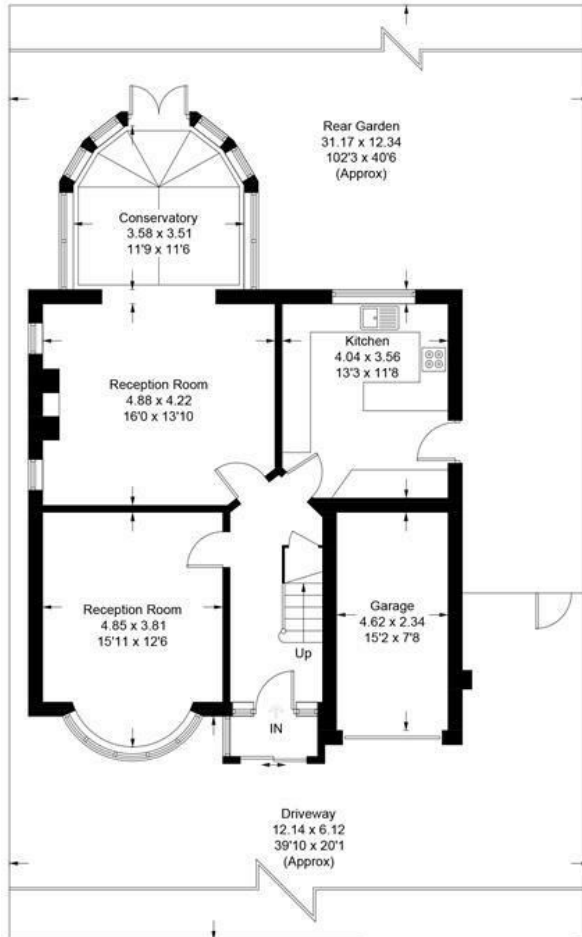
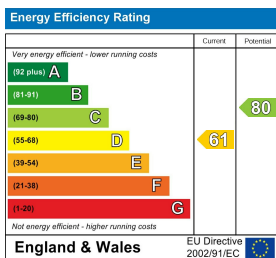


Illustration for identification purposes only, measurements are approximate, not to scale. Fourlabs.co © (ID1277023)

Energy Efficiency Graph



These particulars, whilst believed to be accurate are set out as a general outline only for guidance and do not constitute any part of an offer or contract. Intending purchasers should not rely on them as statements of representation of fact, but must satisfy themselves by inspection or otherwise as to their accuracy. No person in this firm's employment has the authority to make or give any representation or warranty in respect of the property.