



Park Hill Court, SW17

£3,200 pcm



- Three bedrooms
- Stunning condition

- Split-level
- Close to Tooting Common

- Great transport links
- Council Tax Band - D

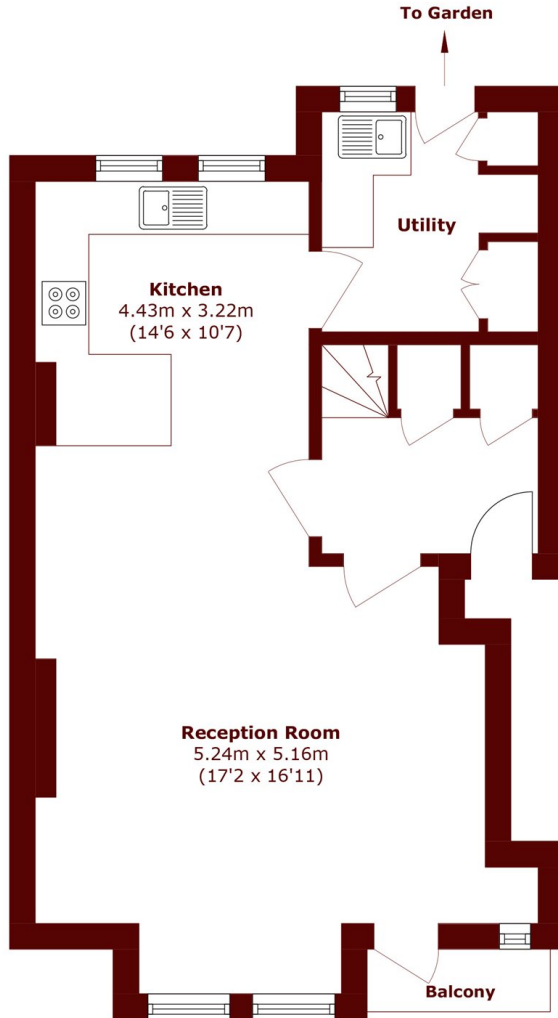


ABOUT THE PROPERTY

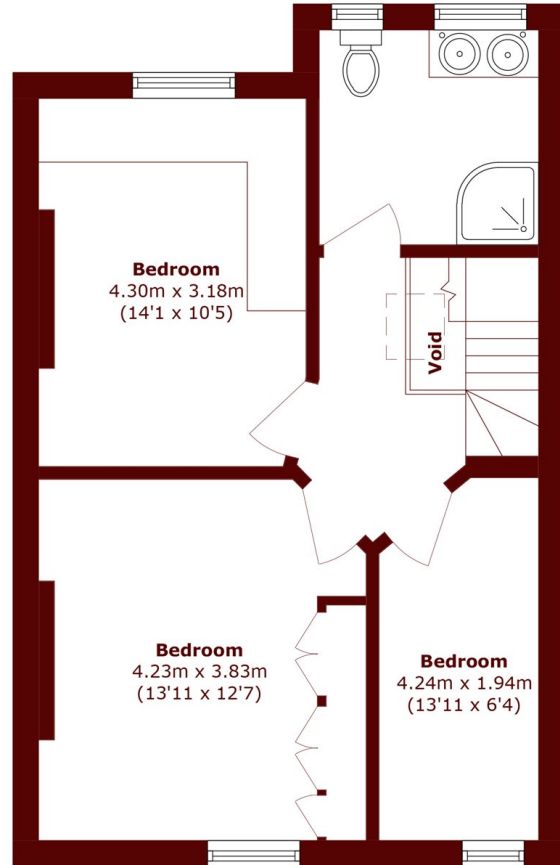
This stunning three double bedroom apartment has been finished to a high standard and is arranged over two floors. Comprising a larger than average open plan reception room with wooden floors and balcony, modern eat-in kitchen with breakfast bar and separate utility room. Upstairs boasts a large principal bedroom with fitted wardrobes, two further double bedrooms and a contemporary bathroom. The property further benefits from communal gardens.

Situated in a gated development on Beeches Road, just a short walk from the shops, cafes and restaurants of Upper Tooting Road and the green open spaces of Tooting Bec Common. Transport links are excellent with the Northern Line at Tooting Bec providing easy access into Central London and frequent buses servicing local areas.





First Floor



Second Floor

Total area (approx.): 104.4 sq. m (1123.7 sq. ft)
(Excluding Void)
Balcony area (approx.): 1.5 sq. m (16.1 sq. ft)

Marsh & Parsons Tooting
29-31 Upper Tooting Road,
London, SW17 7TS
020 8767 3655

We aim to make our particulars both accurate and reliable. However, they are not guaranteed; nor do they form part of an offer or contract. If you require clarification on any points then please contact us, especially if you're traveling some distance to view. Please note that appliances and heating systems have not been tested and therefore no warranties can be given as to their good working order.