



**Hockers Lane, Weaving, Maidstone, , ME14 5JY**  
**Offers In Excess Of £350,000**



**\*\* GUIDE PRICE £350,000 - £375,000 \*\*** A rare to market, two double bedroom semi-detached bungalow, ripe for modernisation or expansion, situated on Hockers Lane, Weavering, and boasting a generous plot of 0.17 acres.

The property is approached by a long gated driveway providing ample parking for several vehicles. Internally, you will find an entrance hall which leads to a sitting room, two double bedrooms, a bathroom and a kitchen leading to a conservatory. Externally the driveway which runs alongside the lawned front gardens leads to a detached garage. The private rear garden spans c120ft in length and is mainly laid to lawn with a paved pathway, raised patio seating area, two sheds and a greenhouse.

The property is situated on the outskirts of Weavering and Bearsted, providing easy access to all local amenities, including the excellent transport links via Bearsted mainline train station and access to the M2 & M20 motorways, together with its close proximity to the superb St John's Primary School and Thurnham & Roseacre schools and just a short distance from the picturesque Village Green in Bearsted, with a selection of excellent pubs, cafe and restaurants. Leisure facilities include Bearsted golf, bowls and tennis clubs, whilst the beautiful grounds of both Leeds Castle and Mote Park are also close by.

Tenure: Freehold. EPC Rating: D. Council Tax Band: D.



**ACCOMMODATION**

Entrance Hall

Sitting Room

Kitchen

Conservatory

Bedroom One

Bedroom Two

Bathroom

**EXTERNALLY**

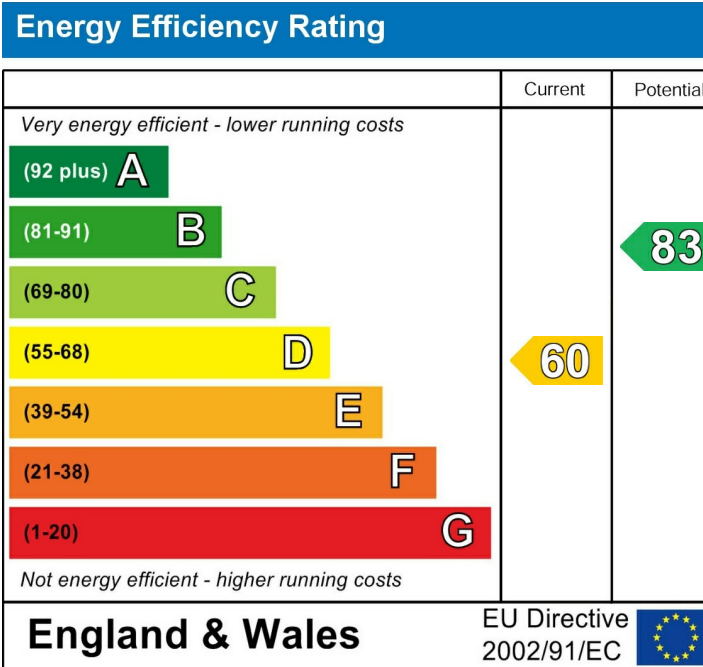
Front and Rear Garden

Garage

Gated Driveway

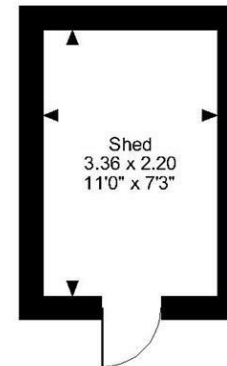
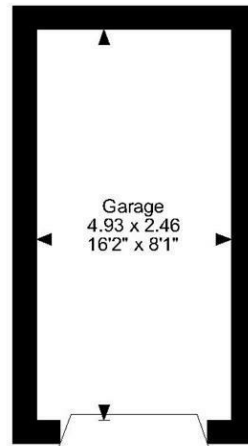
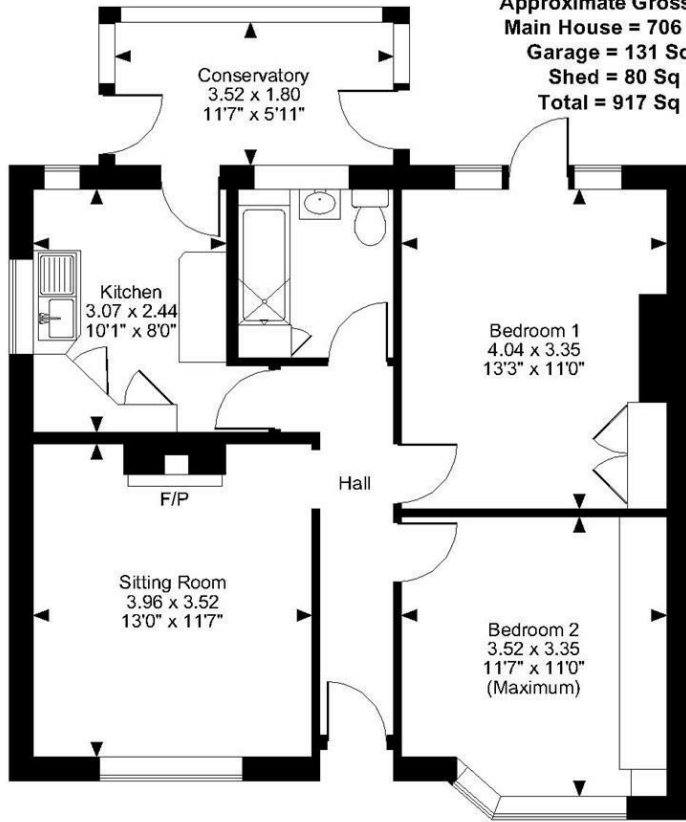
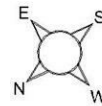
**VIEWING**

Strictly by arrangement with the Agent's Bearsted Office, 132 Ashford Road, Bearsted, Maidstone, Kent ME14 4LX. Tel: 01622 739574.



Page & Wells limited for themselves and for the vendors of this property whose agents they are give notice that: 1. These particulars do not constitute any part of, an offer or a contract. 2. All statements contained in these particulars as to this property are made without responsibility on the part of Page & Wells Limited or the Vendor. 3. None of the statements contained in these particulars as to the property is to be relied on as statements or representations of fact. 4. Any intending purchaser must satisfy himself by inspection or otherwise as to the correctness of each of the statements contained in these particulars. 5. The vendor does not make or give, and neither Page & Wells Limited nor any person in their employment has any authority to make or give any representation whatsoever in relation to this property. These particulars are supplied on the understanding that all negotiations are carried out throughout Page & Wells Limited. Properties with a reference prefixes EAA are those which Page & Wells Limited disclose an interest in accordance with the provisions of the Estates Agents Act 1979

**Hockers Lane, Weaving, Maidstone**  
**Approximate Gross Internal Area**  
**Main House = 706 Sq Ft/66 Sq M**  
**Garage = 131 Sq Ft/12 Sq M**  
**Shed = 80 Sq Ft/7 Sq M**  
**Total = 917 Sq Ft/85 Sq M**



**Ground Floor**

**FOR ILLUSTRATIVE PURPOSES ONLY - NOT TO SCALE**

The position & size of doors, windows, appliances and other features are approximate only.  
 © ehoush. Unauthorised reproduction prohibited. Drawing ref. dig/8584021/TOW

