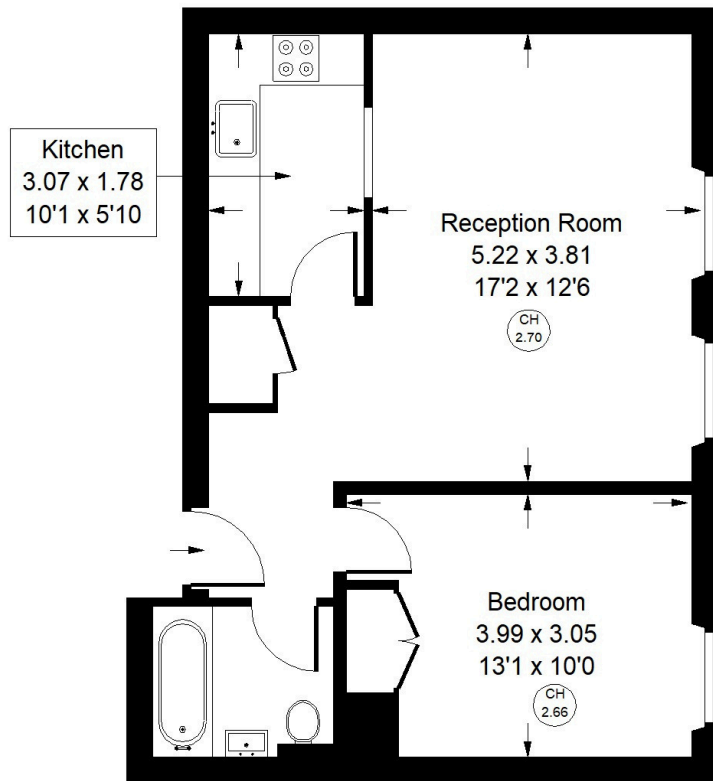




LEXHAM GARDENS, W8

Approx. Gross Internal Area
= 48.9 sq m / 526 sq ft



Third Floor



Whilst every attempt has been made to ensure the accuracy of the floor plan, measurements are approximate and not to scale. No guarantee is given on the total square footage of the property quoted on the plan. Figures given are for guidance. Plan is for illustration purposes only, not to be used for valuations.



Lexham Gardens, W8 - Share of Freehold Local Authority - Royal Borough of Kensington & Chelsea

A delightful one bedroom, third floor flat (with lift) with large windows enjoying leafy views over lovely communal gardens. The property has been lightly refurbished, so is a turnkey opportunity for a prospective purchaser. The accommodation comprises: open-plan reception room with space for dining, separate kitchen, double bedroom with plenty of built-in storage, well-appointed bathroom and access to award winning communal gardens.

- One Bedroom
- Recently Updated
- Communal Gardens
- Lift
- Council Tax Band: F
- EPC Rating: C