



**Pentonville Road**

**2 Bedroom**

**£2,300 pcm + security  
deposit**

Islington, London Angel



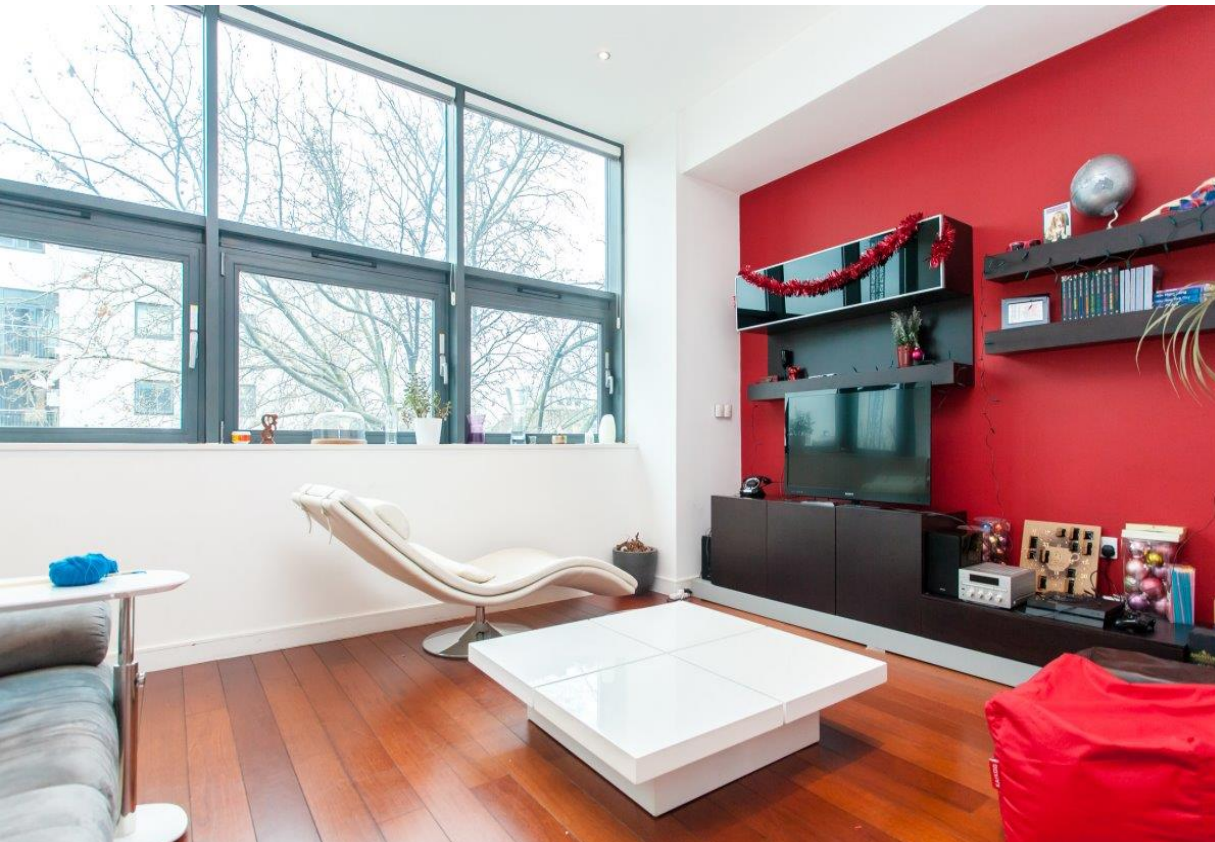
## Flat 2, 101 Pentonville Road

### Description

- P.Built
- 2 Receptions
- Energy Rating : C
- Shower
- Gas Central Heating
- 2 Beds
- 1 Bathroom
- Furnished
- Washing Machine

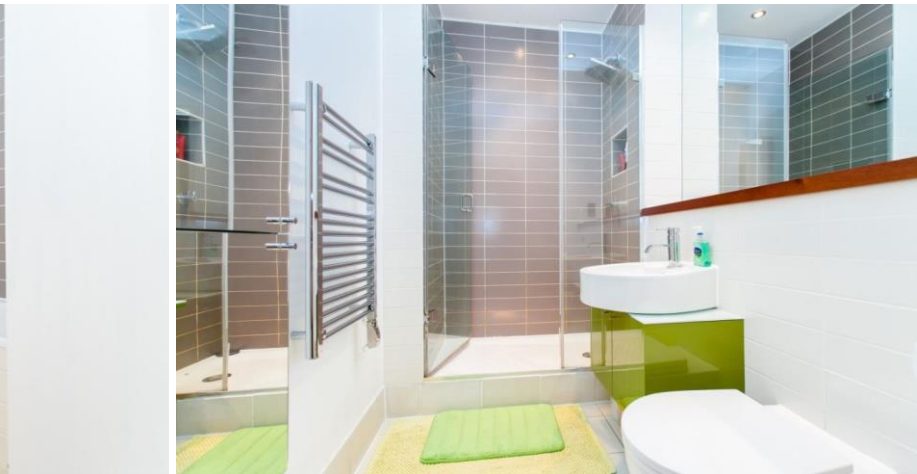
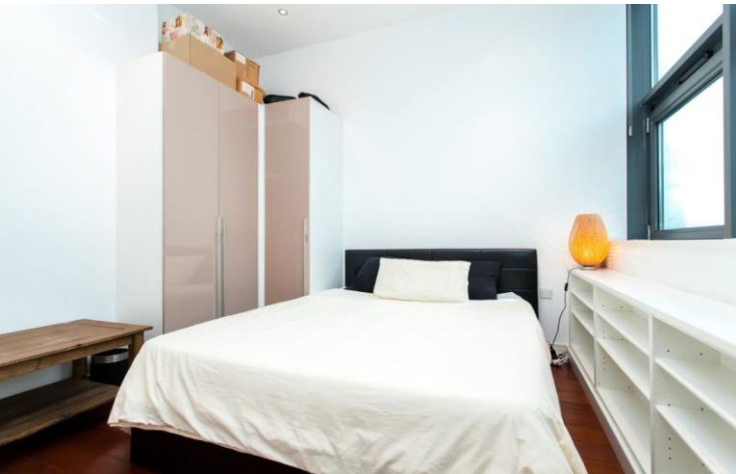
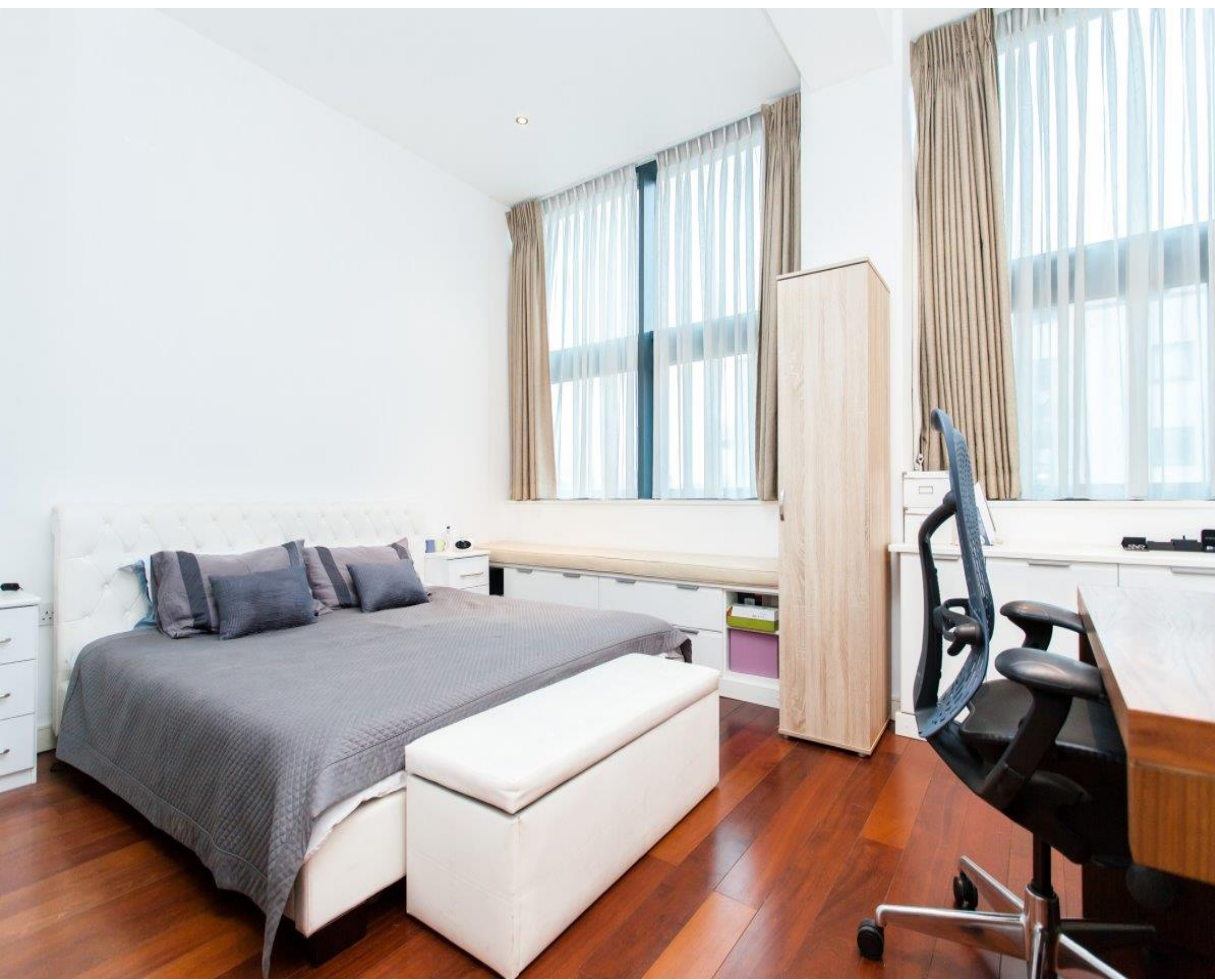
Set within a stone`s throw from Angel station and Upper Street is this stunning warehouse style two bed/two-bathroom apartment. Arranged on the upper level of a former commercial building, the apartment boasts a spatial, contemporary feel. Pentonville Road is perfectly positioned for Kings Cross/St. Pancras, Old Street and fashionable Clerkenwell.

The vast living space of 850 sq ft comprises of reception room, fully fitted kitchen, master bedroom with en-suite, three-piece family bathroom and second bedroom/study. Array of features include under-floor heating, double glazed windows, built in storage, low-voltage lighting and security entry system. FURNISHED



### Accommodation Comprises:





Certificate Number : 0418-8000-6285-5331-5990

Score	Energy rating	Current	Potential
92+	A		
81-91	B		
69-80	C	76	77
55-68	D		
39-54	E		
21-38	F		
1-20	G		

<https://find-energy-certificate.digital.communities.gov.uk/energy-certificate/0418-8000-6285-5331-5990>



LONDON MOVE

**Our Fees**

London Move are registered members of the Property Redress Scheme an independent organisation dedicated to resolving disputes between consumers and property agents in the UK.

London Move are registered members of SafeAgent (CMP).

We require a Holding Deposit equal to 1 week's rent (approx £530.77) to secure the property. This holding deposit will be used towards the security deposit and rent in advance if the tenancy proceeds.

This property requires a Security Deposit of 5 week's rent (approx £2653.85)

The following fees may also be charged during your tenancy

312, St Paul's Road

London, N1 2LF

telephone : 02027226 5252

email : Abdul@london-move.com

**London-Move.com**