



BLAIRDERRY ROAD, SW2

£600,000

- Ground floor period maisonette
- Two bedrooms
- Excellent condition
- Private garden
- Share of freehold
- Energy rating: D





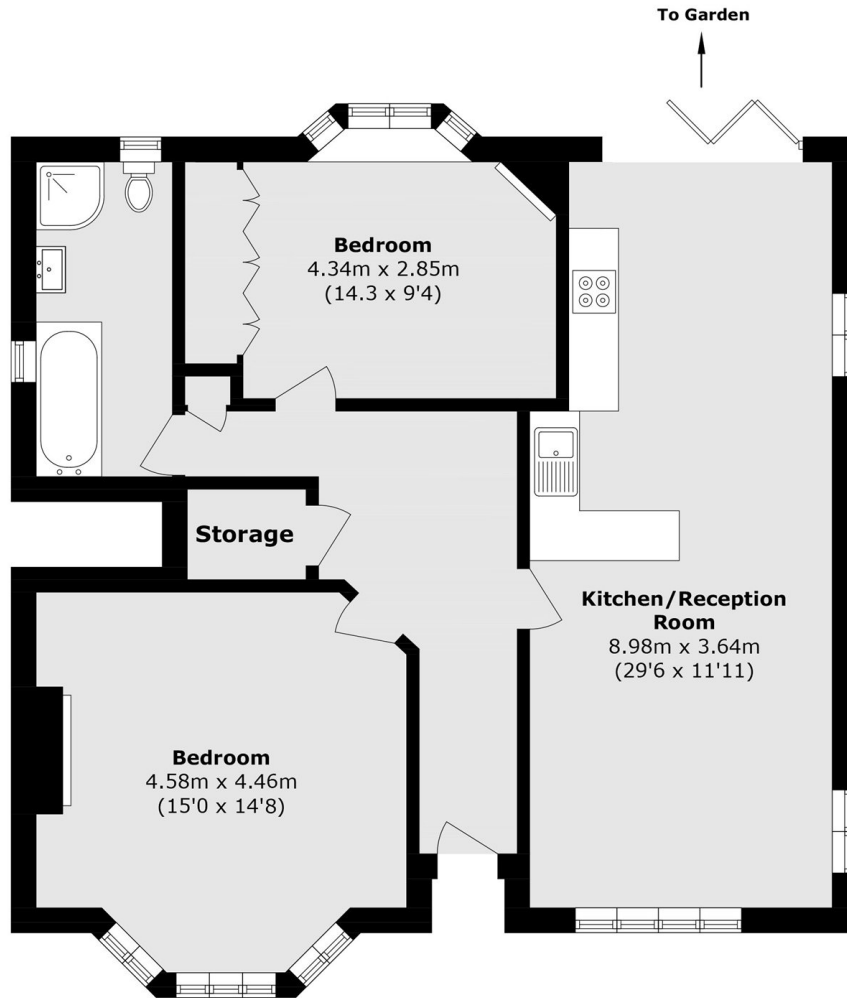
ABOUT THE HOME

A spacious 900+sq ft, two double bedroom ground floor maisonette, featuring an open plan kitchen/living space opening onto a private garden. The property has been renovated to a high standard and is well maintained.

Streatham Hill station is a short walk away, with direct trains to London Victoria in approximately 17 minutes. Brixton tube station is a short bus journey away. The area has a great mix of large chain coffee shops, supermarkets and gyms along with smaller independent coffee shops, restaurants, wine bars and retail shops.







Total area (approx.): 84.8 sq. m (912.7 sq. ft)

JACKSONS STREATHAM

1-3 De Montfort Parade,
Streatham High Road,
Sales: 020 8487 3179
Lettings: 020 8487 3180

Energy Rating: D We aim to make our particulars both accurate and reliable. However they are not guaranteed; nor do they form part of an offer or contract. If you require clarification on any points then please contact us, especially if you're traveling some distance to view. Please note that appliances and heating systems have not been tested and therefore no warranties can be given as to their good working order.