



7 The Spur, The Dome Village, Hockley, Essex, SS5 5LZ

Two Bedroom Park Home / Price: OIEO £195,000 / Tel: 01702 207720

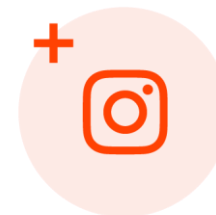
amos



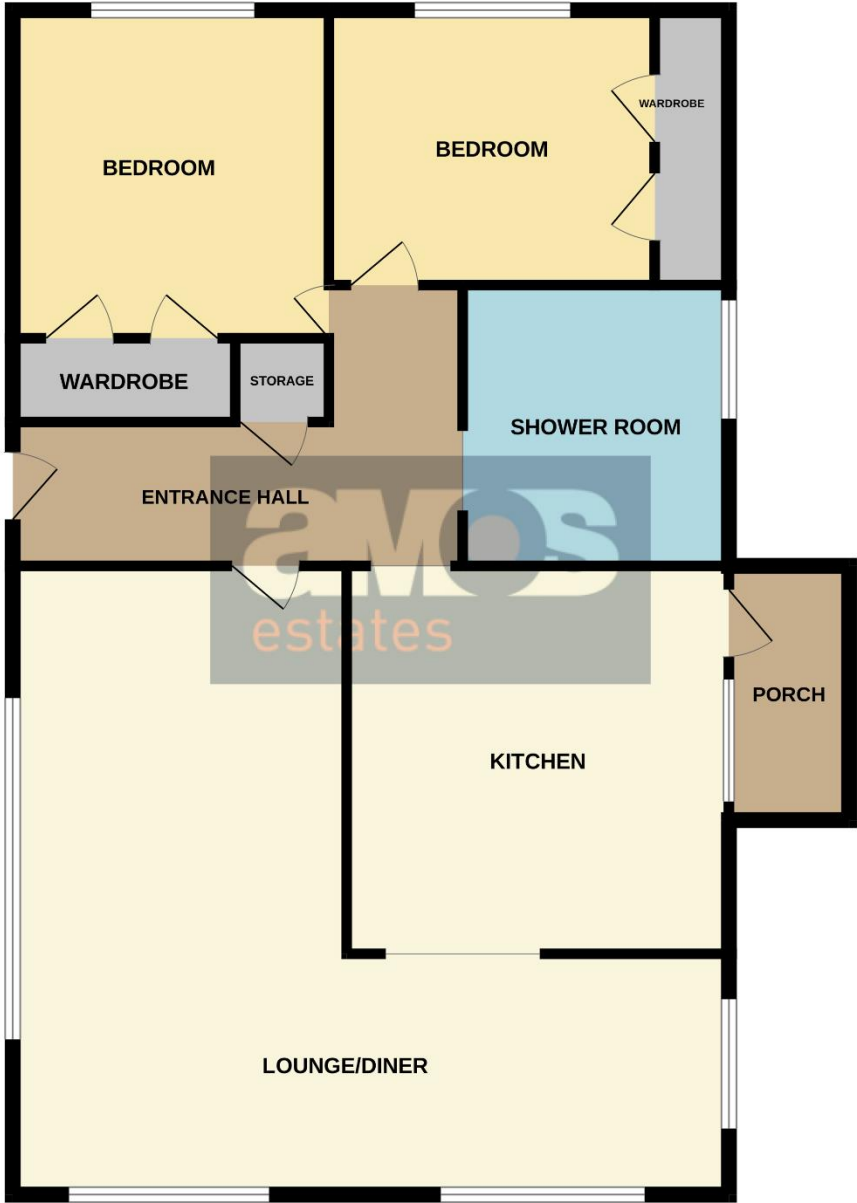
Guide Price: £200,000 - £220,000 Situated within a peaceful setting, this **two-bedroom** park home is ideally located for comfortable, low-maintenance living. The property features a spacious living room with open access to the dining area, creating a bright and sociable space. From the dining area, you have access to the fitted kitchen, which offers space for appliances and side access. There are two bedrooms, both benefiting from built-in wardrobes, along with a three-piece shower room. Externally, the rear garden is a good size, mainly laid to lawn with a patio area to the side and a sun deck, perfect for relaxing or entertaining. To the front, the property provides off-street parking for three to four vehicles. The development also benefits from an on-site link to Ashingdon Medical Centre, offering convenient access to doctors, nurses, and prescription services, as well as an on-site restaurant. Offered with **no onward chain**.

Set within the popular Dome Village, the park is surrounded by open countryside, offering a peaceful setting to enjoy. There's a convenient on-site restaurant, and Hockley Village shops and train station are all within easy reach.

Find us on



GROUND FLOOR





Property Information

- / Over 55's Park Home
- / Two Bedrooms
- / Peaceful Countryside Setting
- / Spacious Lounge with access to Dining Area
- / Fitted Kitchen with Space for Appliances & Side Access
- / Built-in Wardrobes to Both Bedrooms
- / Three-piece shower room
- / Council Tax Band: A
- / On-Site Restaurant
- / On Site Link to Ashingdon Medical Centre with Access to Doctors, Nurses and Prescriptions.
- / No Onward Chain



Entrance door leading to:

Entrance Hall /

Plastered and coved ceiling, fitted carpet, storage cupboard, radiator, doors leading off:

Living Room /

19'8 x 10'1

Double glazed windows to front and side aspect, plastered and coved ceiling, fitted carpet, radiator, power points, open access to:

Dining Room /

9'7 x 7'0

Double glazed windows to side and rear aspect, plastered and coved ceiling, fitted carpet, radiator, power points, door to:

Kitchen /

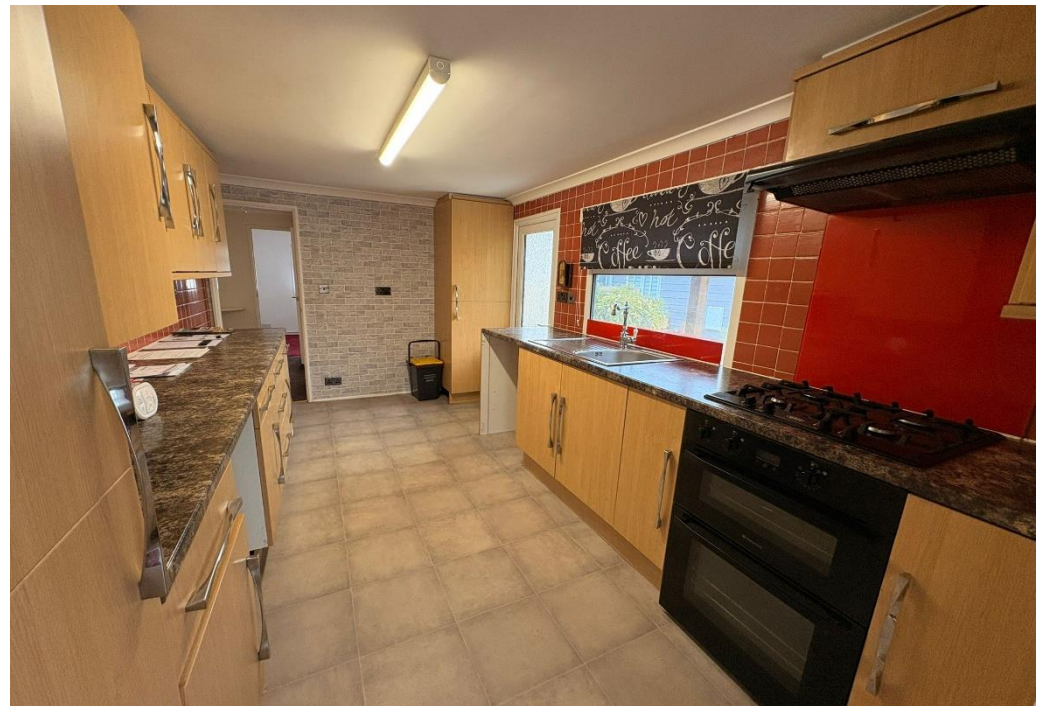
13'7 x 8'3

Fitted at both eye and base level in a range of wood roll units with working surface over, integrated appliances such as double oven and four ring gas hob with extractor fan above, space for appliances such as freestanding fridge/freezer, washing machine and dishwasher, stainless steel sink unit with mixer tap and drainer, double glazed window to side aspect and double glazed door providing side access, plastered and coved ceiling, fitted carpet, floor covering, part tiled walls, power points.

Bedroom One /

10'7 x 9'4

Double glazed windows to front and side aspect, fitted carpet, built in wardrobes, radiator, power points.





Bedroom Two /

7'8 x 7'0

Double glazed window to rear aspect, fitted carpet, built in wardrobes, radiator, power points.

Shower Room /

Three piece suite comprising of shower cubicle with fitted shower unit, vanity unit with sink top and mixer tap, low level w/c, double glazed window to side aspect, plastered ceiling, wood effect floor covering, chrome heated towel rail.

Rear Garden /

Access from side door with steps down to patio area, remaining laid to lawn with sun decked area to rear, secure fence boundaries.

Front Garden /

Driveway providing parking for three/four vehicles.

Terms of Lease /

Available on request.

We recommend our customers use our panel of Conveyancers/Solicitors. It is your decision whether you choose to deal with our recommendation, and you are under no obligation to do so. You should know that we may receive a referral fee of £150 to £200 per transaction from them.

Should you arrange a Mortgage through our recommended mortgage advisor, again of which there is no obligation we will receive a commission fee. The amount of commission will depend on the size of the loan and any associated products that you decide to take.

The Consumer Protection from Unfair Trading Regulations 2008 (CPRs). These details are for guidance only and complete accuracy cannot be guaranteed. If there is any point, which is of particular importance, verification should be obtained. They do not constitute a contract or part of a contract. All measurements are approximate. No guarantee can be given with regard to planning permissions or fitness for purpose. No apparatus, equipment, fixture or fitting has been tested. Items shown in photographs are NOT necessarily included. Interested Parties are advised to check availability and make an appointment to view before travelling to see a property.

