



## Churchside Gardens, Easington Lane, Sunderland

£170,000



 4  2  2

EPC rating: C

- 4 Bed Detached Property
- Spacious Floorplan
- Private Garden

- Large Open Plan Living Area
- Chain Free
- Driveway and Garage

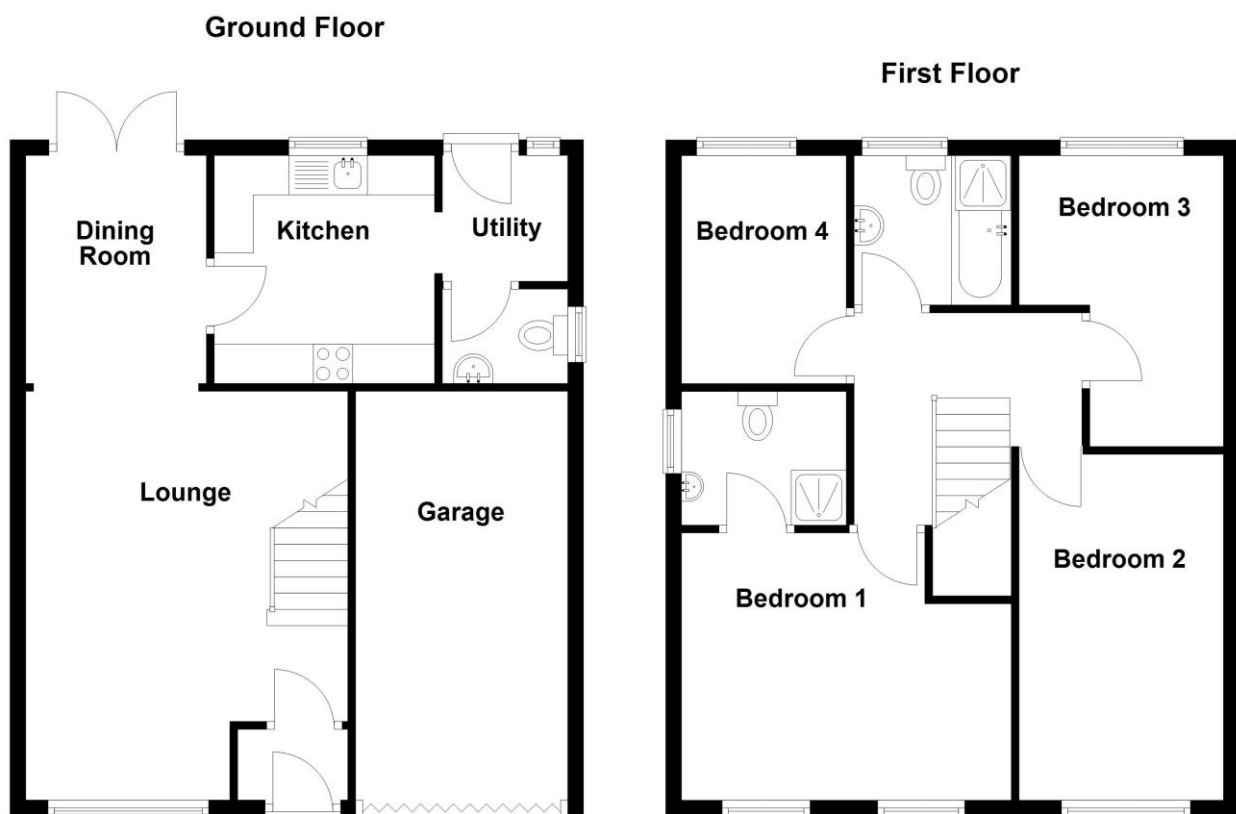
## Description

Nicholas Humphreys proudly welcome to the market this 4 bed detached property positioned in the quiet and quaint estate of Churchside Gardens. The property offers generous living accommodation with open plan living areas and is complete with gas central heating and double glazing throughout.

Developed by Barrat Homes this charming 4-bedroom property presents an exciting opportunity for a wide range of purchasers. The property's sizeable floorplan briefly a porch upon entrance to the property, open plan living area and dining area, kitchen and utility area and downstairs W/C. To the first floor lies the master bedroom complete with an en suite, three bedrooms, communal bathroom and landing area.

Nestled in a cul-de-sac, the property enjoys an enviable position providing easy access to Sunderland and Durham City. The property is superbly connected, with the A1 and A19 located nearby for convenient travel to both north and south destinations. A comprehensive range of local amenities are within easy reach, including well-regarded schools, popular pubs and restaurants, and a variety of health and leisure facilities.

## Floorplan



Total area: approx. 113.2 sq. metres (1218.0 sq. feet)

**11 Churchside Gardens, Durham**

# Photographs



# Map



# Notes